

# IBM BookManager Build for Windows: Getting Started Version 2 Release 3







# IBM BookManager Build for Windows: Getting Started Version 2 Release 3

### **Fifth Edition (July 2002)**

This edition applies to IBM BookManager Build for Windows, Version 2 Release 3 of the licensed program, program number 5639-A74, and to all subsequent releases and modifications until otherwise indicated in new editions. Make sure you are using the correct edition for the level of the product.

Order publications by:

- **Phone: (800) 879-2755** - IBM Software Manufacturing Solutions takes publication orders between 8:30 a.m. and 7:00 p.m. eastern standard time (EST).
- **Fax: (800) 445-9269** - (Attn: Publications, 3rd floor).
- Web: <http://www.elink.ibm.com/public/applications/publications/cgibin/pbi.cgi>
- **IBM representative or the IBM branch office serving your locality**

Publications are not stocked at the address below.

Address comments about this publication to: IBM Corporation, Attn: Information Development, Department G71A Building 062, P.O. Box 12195, Research Triangle Park, NC 27709-2195. You can fax comments to (919) 254-0206.

Send comments about the product to the following E-mail address: [hcarter@us.ibm.com](mailto:hcarter@us.ibm.com). You can fax comments to 919-254-9799.

When you send information to IBM, you grant IBM a nonexclusive right to use or distribute the information in any way it believes appropriate without incurring any obligation to you.

© **Copyright International Business Machines Corporation 1989, 2002. All rights reserved.**

US Government Users Restricted Rights – Use, duplication or disclosure restricted by GSA ADP Schedule Contract with IBM Corp.

---

## Notices

References in this publication to IBM products, programs, or services do not imply that IBM intends to make these available in all countries in which IBM operates. Any reference to an IBM product, program, or service is not intended to state or imply that only that IBM product, program, or service may be used. Any functionally equivalent product, program, or service that does not infringe any of the intellectual property rights of IBM may be used instead of the IBM product, program, or service. The evaluation and verification of operation in conjunction with other products, except those expressly designated by IBM, are the responsibility of the user.

Licensees of this program who wish to have information about it for the purpose of enabling: (i) the exchange of information between independently created programs and other programs (including this one) and (ii) the mutual use of the information which has been exchanged, should contact the SWS General Legal Counsel, IBM Corporation, Department TL3 Building 062, P. O. Box 12195, Research Triangle Park, NC 27709-2195. Such information may be available, subject to appropriate terms and conditions, including in some cases, payment of a fee.

IBM may have patents or pending patent applications covering subject matter in this document. The furnishing of this document does not give you any license to these patents. You can send license inquiries, in writing, to the IBM Director of Licensing, IBM Corporation, 500 Columbus Avenue, Thornwood, NY, USA 10594.

IBM may change this publication, the product described herein, or both.

---

## Trademarks

The following terms are trademarks of the IBM Corporation in the United States or other countries:

AIX

BookManager

**Build for Windows**

DOS

IBM

IBM Softcopy Reader

MVS

VM

z/OS

The following terms are trademarks of other companies:

**Ami Pro** Lotus Development Corporation

**FrameMaker** Adobe Systems Incorporated

**Microsoft** Microsoft Corporation

**Pentium** Intel Corporation

**Windows** Microsoft Corporation

**Windows NT**

**WordPerfect**

**WordPro**

**Java**

Microsoft Corporation

Corel Corporation

Lotus Development Corporation

Sun Microsystems, Inc.

# Contents

<b>Notices</b> . . . . .	iii
Trademarks . . . . .	iii
<b>Figures</b> . . . . .	vii
<b>Preface - About This Book</b> . . . . .	ix
What You Should Know Before Reading This Book . . . . .	ix
How This Book Is Organized . . . . .	ix
Conventions Used in This Book . . . . .	x
Terms Used in This Book . . . . .	x
Where to Find More Information . . . . .	xi
Where to Find More Information about BookManager . . . . .	xi
<b>Chapter 1. Introduction to Build for Windows V2.3</b> . . . . .	1
1.1 Source Document Types You Can Use to Build Softcopy Books . . . . .	2
1.2 How Softcopy Books Are Similar to Printed Documents. . . . .	2
1.3 How You Can View Softcopy Books . . . . .	3
1.3.1 Using Template Files to Help Create Source Documents . . . . .	3
<b>Chapter 2. Installing Build for Windows</b> . . . . .	5
2.1 Requirements for Installing Build for Windows . . . . .	5
2.1.1 Software Requirements . . . . .	5
2.2 Migration from BookManager Build for Windows Version 2.2 to Version 2.3 . . . . .	5
2.3 Installing BUILD for Windows Program. . . . .	6
2.4 Using the File Conversion Utility . . . . .	7
2.4.1 Converting V2.2 Files . . . . .	7
2.4.2 Launching from a Command Line . . . . .	8
2.4.2.1 Start the Conversion Utility: . . . . .	8
2.4.2.2 Convert a Single V2.2 Notebook or Rules File: . . . . .	8
2.4.2.3 Convert all Version 2.2 Notebook and Rules Files in a Specified Directory: . . . . .	9
2.4.2.4 Display a Summary of the Command Line Features:. . . . .	9
<b>Chapter 3. Starting Build for Windows</b> . . . . .	11
3.1 Starting from the Windows Start Menu. . . . .	11
3.2 Starting from a Command Line. . . . .	11
3.3 Getting Started with BUILD for Windows V2.3 . . . . .	11
<b>Chapter 4. Working with Build for Windows Files</b> . . . . .	13
4.1 Build Configuration File - for Specifying Document Information . . . . .	13
4.2 Style Mapping File - for Defining Element Mapping . . . . .	14
<b>Chapter 5. Using Build for Windows</b> . . . . .	17
5.1 Main Window . . . . .	17
5.1.1 Menu Bar . . . . .	18
5.1.2 Toolbar . . . . .	19
5.1.3 Data Fields . . . . .	20
5.2 Build Options Window. . . . .	21
5.3 Messages Window . . . . .	22
5.4 Build Progress Window. . . . .	23
5.5 Build List Window . . . . .	24
5.5.1 Menu Bar . . . . .	24
5.5.2 Build List . . . . .	25
5.5.3 Build List Buttons. . . . .	25

5.5.4 Replace Existing Book Files - Check Box . . . . .	25
5.5.5 Build List Progress Window . . . . .	26
5.6 Style Mapping Window . . . . .	27
5.6.1 Title Bar . . . . .	28
5.6.2 Menu Bar . . . . .	28
5.6.3 Book Style Tree . . . . .	28
5.6.4 Source Style Tree . . . . .	29
5.6.5 Mapping Styles . . . . .	29
5.7 Advanced Command Line Features . . . . .	31
5.7.1 Start Build for Windows - Opening a Specific Build Configuration File . . . . .	31
5.7.2 Start Build for Windows - Opening a Specific Build Configuration File and Building the Specified Softcopy Book . . . . .	32
5.7.3 Start Build for Windows - Opening up the Build List Window to a Number of Build Configuration Files and Building the Specified Softcopy Books . . . . .	32
5.7.4 Build a Softcopy Book Specified in a Build Configuration File - Without Starting the Build for Windows User Interface . . . . .	33
5.7.5 Build a Number of Softcopy Books Specified in a Number of Build Configuration Files - Without Starting the Build for Windows User Interface . . . . .	34
5.7.6 Display a Summary of Command Line Features . . . . .	34
<b>Chapter 6. Build for Windows V2.3 Program Service . . . . .</b>	<b>37</b>
6.1 Type and Duration of Program Service . . . . .	37
6.2 Statement of Service . . . . .	37
<b>A. Guide for Building Softcopy Books with BookManager Build for Windows 2.3</b>	<b>39</b>
A.1 Create a Document with Your Word processor . . . . .	40
A.2 Start the Build Program Window . . . . .	41
A.3 Specify Where the Source Files for Your Document are Located . . . . .	41
A.4 Specify where to Store the Softcopy Book after it is Built . . . . .	42
A.5 Select the Sample "Style Mapping File" for the type of Word Processor You Used to Create the Document . . . . .	42
A.6 Specify Features that You want to Include in the Softcopy Book . . . . .	44
A.7 Start the Build Process to Do an Initial Softcopy Build . . . . .	45
A.8 Analyze the Results of the Softcopy Build . . . . .	46
A.9 Create a Customized Style Mapping File . . . . .	46
A.10 Build Another Softcopy Book with the Changes You Made to the Style Mapping File . . . . .	47
A.11 Save the Data you Specified in the Build Window and Style Mapping File . . . . .	48
<b>B. Sample Files Shipped with BookManager Build for Windows 2.3 . . . . .</b>	<b>49</b>
<b>Glossary . . . . .</b>	<b>51</b>
<b>Bibliography . . . . .</b>	<b>55</b>
<b>Index . . . . .</b>	<b>57</b>



# Figures

2-1. BookManager Conversion Utility Window .....	7
2-2. Command prompt Window .....	10
5-1. Main Window - with details hidden .....	17
5-2. Main Window - with details shown .....	18
5-3. Build Options Window .....	22
5-4. Messages Window .....	22
5-5. Build Progress Window .....	24
5-6. Build List Window .....	24
5-7. Build List Progress Window.....	27
5-8. Style Mapping Window .....	27
5-9. Source Style Tree.....	30
5-10. Book Style .....	30
5-11. Book Style - with several Source Styles .....	31
5-12. Summary of the Command Line Features.....	35



---

## Preface - About This Book

This book describes the IBM BookManager Build for Windows V2.3 licensed program and how to install and use it to build softcopy books.

---

### What You Should Know Before Reading This Book

You should be familiar with terminology associated with your word-processing program. You should also be familiar with the Microsoft Windows platform you are using (such as: Microsoft Windows NT, V4.0 or later, or Windows 95, 98, 2000, or ME) to perform tasks such as:

- Moving, sizing, and closing windows
  - Entering information into entry fields
  - Selecting icons, menu choices, radio buttons, push buttons, and check boxes
  - Selecting items from lists
- 

### How This Book Is Organized

Table 1 shows where you can look in this book for information about getting started with Build for Windows:

**Note:** This book also contains a Glossary of terms

*Table 1. Getting started information.*

If you want to:	See:
Learn what BookManager Build for Windows is and what it does	Chapter 1, "Introduction to Build for Windows V2.3" on page 1
Install BookManager Build for Windows	Chapter 2, "Installing Build for Windows" on page 5
Start BookManager Build for Windows	Chapter 3, "Starting Build for Windows" on page 11
Read basic information about Build for Windows files	Chapter 4, "Working with Build for Windows Files" on page 13
Get detailed information on using Build for Windows	Chapter 5, "Using Build for Windows" on page 17
Call IBM Service	Chapter 6, "Build for Windows V2.3 Program Service" on page 37
Learn how to build a softcopy book with the help of step-by-step instructions.	Appendix A, "Guide for Building Softcopy Books with BookManager Build for Windows 2.3" on page 39
See the list of sample files included with Build for Windows V2.3	Appendix B, "Sample Files Shipped with BookManager Build for Windows 2.3" on page 49

---

## Conventions Used in This Book

When new or unfamiliar terms are introduced, they appear in italics. A definition for the term follows in the text. Definitions for the italicized terms, as well as for abbreviations, appear in the glossary.

The following items appear in **bold** typeface:

- Titles, entry field names, and other text that Build for Windows displays
- Items that you are to type or select
- The names of keys on your keyboard

---

## Terms Used in This Book

The following terms have specific meaning in this book:

### **BookManager Build**

A set of IBM licensed programs that lets you create softcopy books. BookManager Build is available on the following platforms: MVS, VM, and Windows. In this book, the term BookManager Build refers to any BookManager Build program.

### **BookManager Readers**

In this book, the term BookManager Readers refers to any BookManager READ programs.

- *IBM BookManager Read* for VM and MVS (host-based systems, such as z/OS, System 390 and MVS)
- *IBM BookServer* for z/OS, AIX, Linux, and Windows (allows you to read BookManager books on the Web)
- *IBM Softcopy Reader* for Windows and Linux  
IBM Softcopy Reader is a Java-based online documentation reader and organizer made up of two programs:

- **Book Reader**

Book Reader allows you to open softcopy books created with one of the IBM BookManager Build programs. You can view and navigate through softcopy books, do searches within the book, create notes, copy text, print text selections, a section, or the entire book.

- **Bookshelf Organizer**

Bookshelf Organizer allows you to manage your books and bookshelves in the following ways:

- Specify the location (paths) of all books and bookshelves located on your workstation, on a network, or an external storage device
- Organize your bookshelves by name, date, or description
- Organize your books by name, date, description, or document number
- Create your own bookshelves
- List bookshelves
- Delete bookshelves
- Import books into a bookshelf
- Search bookshelves or selected books
- Move books between bookshelves

### **Build Configuration File**

The Build Configuration File is a file containing the build settings. This file has the extension .bcf. In Version 2.2, it was referred to as Notebook or Build Notebook.

### **Build Style Mapping File**

The Build Style Mapping File is a file that contains the rules for mapping source document styles to book styles. This file has the extension .bsm. In Version 2.2, it was referred to as Rules or Rules Notebook.

### **Source document**

An input file that can contain text, formatting codes, and artwork. A source document can be edited, printed, viewed, or used as input to a licensed publishing program such as BookManager Build. The source documents you can build using BookManager Build for Windows are described in 1.1 "Source Document Types You Can Use to Build Softcopy Books" on page 2.

### **Build**

To create a softcopy book from a source document.

---

## **Where to Find More Information**

More information about Build for Windows can be found in the following:

- *Online Help* - Read the online help to get specific information about Build for Windows functions and procedures.
- *IBM BookManager Build for Windows: Messages and Codes* - This softcopy book describes the messages and codes that appear when you build softcopy books.
- Sample source documents (called template files) are included with the Build for Windows product. They are intended to simplify the tasks of generating your own source documents and creating a style mapping file. For each template file, Build for Windows also provides a style mapping file. See 1.3.1 "Using Template Files to Help Create Source Documents" on page 3 for additional information on the templates.

---

## **Where to Find More Information about BookManager**

On the World Wide Web, check out:

<http://www.ibm.com/software/office/bkmgr>

This page gives you everything you want to know about BookManager products, how to order them, how to obtain service, and what's new in the BookManager product family.



## Chapter 1. Introduction to Build for Windows V2.3

The BookManager Build for Windows V2.3 licensed program is part of the IBM BookManager family of products. With Build for Windows, you can convert a formatted source document created with a word-processing program to a *softcopy book*. You can view a softcopy book with IBM Softcopy Readers and IBM BookManager Readers. The types of source documents you can use with Build for Windows are listed in 1.1 "Source Document Types You Can Use to Build Softcopy Books" on page 2.

The following illustrates the relationship between your word processor documents, BookManager Build for Windows, and the IBM Softcopy Readers and BookManager Readers.

### BookManager Build for Windows

Build for Windows lets you take a formatted document, created on a PC-workstation word processing program, and convert it into an electronic "softcopy" book.



### IBM Softcopy Readers and IBM BookManager Readers

Allow you to use the softcopy book online:

- View and navigate a book
- Create and manage softcopy book shelves and libraries
- Search books, bookshelves, and libraries
- Print book topics
- Cut and paste book topics



This chapter describes the following topics:

- Source document types you can use to build softcopy books
- How softcopy books are similar to printed documents

- How you can view softcopy books
- Before you start using Build for Windows

---

## 1.1 Source Document Types You Can Use to Build Softcopy Books

With BookManager Build for Windows, you can build softcopy books from source documents prepared using any of the following products or file types:

- Adobe FrameMaker, Versions 4.0, 5.0, and 6.0 (in .MIF format).
- Corel WordPerfect for DOS, Versions 5.0, 5.1, and 6.0.
- Corel WordPerfect for Windows, Versions up to and including 9.0.
- Lotus Ami Pro for Windows, Version 3.0, Version 3.1 for Windows
- Lotus WordPro, Version 9.6 and earlier
- Microsoft Word for DOS, Versions 5.0, 5.5, and 6.0.
- Microsoft Word for Windows, Version 6.0 (Word95), Version 7.0 (Word 97), and Word2000.

---

## 1.2 How Softcopy Books Are Similar to Printed Documents

When you view a softcopy book, you may notice the following similarities with your printed document:

### Topics

Both printed documents and softcopy books contain topics. A softcopy book does not contain pages, so topics are the basic BookManager information units. A topic consists of a heading and all the subsequent text up to the next heading or subheading. All references (such as index or table of contents entries) in a BookManager book refer to topics instead of pages.

### Front matter

Printed documents and softcopy books usually contain front matter, such as a table of contents, list of figures, and list of tables. When Build for Windows creates these front-matter document elements, BookManager Read functions, such as hypertext links from the table of contents (described below) and the book-description function, become available.

### Hypertext links

Printed documents contain references to page numbers and headings. In a softcopy book, hypertext links connect information. When you view a softcopy book with BookManager Readers, certain words and phrases are highlighted. You can go directly to another part of the book that contains information associated with the highlighted word or phrase by:

- Double-clicking on the highlighted word or phrase (READ/6000 or READ for Windows)
- Moving the cursor to the highlighted word or phrase and pressing **Enter**

For example, you can move from a table caption in the List of Tables directly to the table itself, or from an index entry directly to the index reference in the book.

### Artwork

Many printed documents contain artwork. In a softcopy book, a graphics reference link, such as **PICTURE 3**, appears and is highlighted where your artwork



normally appears in a printed document. When you read the softcopy book, you can display the artwork by:

- Double-clicking on the graphics reference link. **Note:** You have the capability to display pictures integrated into the text with all of the workstation readers (IBM Softcopy Reader, all of the BookServers, and READ for Windows).
- Moving the cursor to the graphics reference link and pressing **Enter**

### Back matter

Softcopy books, like printed documents, can contain back matter such as appendices, a glossary, and an index. When Build for Windows creates an index, hypertext links between the index entries and index references become available.

---

## 1.3 How You Can View Softcopy Books

You can view softcopy books with any of the readers listed. When you read the softcopy book, you can search for information, make notes, and perform other tasks.

- IBM Softcopy Reader for Windows
- IBM Softcopy Reader for Linux
- BookManager READ/MVS Version 1.3
- BookManager READ/VM Version 1.3
- BookManager BookServer for the World Wide Web for AIX and Linux
- BookManager BookServer for the World Wide Web for Windows
- BookManager BookServer for the World Wide Web for z/OS

**Note:** On the AS/400 platform, you can use InfoSeeker, the AS/400 implementation of the BookManager Read product family, to access and view books. InfoSeeker is a part of the OS/400 licensed program, Version 3 Release 1 or later. If you have the IBM Softcopy Reader installed on your workstation, you can have Build for Windows access the Softcopy Reader automatically after building a softcopy book. See 5.2 “Build Options Window” on page 21 for information on how to start BookManager READ programs.

### 1.3.1 Using Template Files to Help Create Source Documents

Sample source documents (called template files) are included with the Build for Windows product. They are intended to simplify the tasks of generating your own source documents and creating the style mapping file. For each template file, Build for Windows also provides a style mapping file.

#### Which template to use

Table 1-1. Template Files

Word processor	Template	Style Mapping File
Adobe FrameMaker	TEMPMKR.MIF	TEMPMKR.BSM
Corel WordPerfect 6 and earlier	TEMPWP6.DOC	TEMPWP6.BSM
Corel WordPerfect 7 and later	TEMPWPT.DOC	TEMPWPT.BSM
Lotus Ami Pro	TEMPAMI.SAM	TEMPAMI.BSM
Lotus WordPro	TEMPLWP.LWP	TEMPLWP.BSM

Table 1-1. Template Files

Word processor	Template	Style Mapping File
Microsoft Word 95	TEMPMS6.DOC	TEMPMS6.BSM
Microsoft Word 97 and later	TEMPMSW.DOC	TEMPMSW.BSM

Using the template Build Configuration and Build Style Mapping files

The template files can be a good starting point for creating your own Build Configuration and Build Style Mapping files. To do this, open the desired template file, make the changes necessary to build your book, then save the Build Configuration or Build Style Mapping file as a new file. You will not be able to save changes directly to the template files.

---

## Chapter 2. Installing Build for Windows

This chapter describes how to install Build for Windows. The following topics are described in this chapter:

- Requirements for installing Build for Windows
- Migration from BookManager Build for Windows Version 2.2 to Version 2.3
- Installing the Build for Windows program
- Using the Conversion Utility

---

### 2.1 Requirements for Installing Build for Windows

Before installing Build for Windows, check to see that the following hardware and software resources are available:

- Any system unit capable of running Microsoft Windows NT, V4.0 or later, or Windows 95, 98, 2000, or ME. A 266MHZ processor or higher is recommended.
- Display monitor
- Any pointing device
- One CD-ROM device
- 64MB of RAM in addition to that required by the operating system
- 40MB of hard-disk drive storage in addition to that required by the operating system
- A temporary file space of 5x the size of the word processor file you are currently building is needed

#### 2.1.1 Software Requirements

- Microsoft Windows NT, V4.0 or later, or Windows 95, 98, 2000, or ME
- Sun Java 2 Runtime Environment 1.3.0 or later
- IBM Softcopy Reader for Windows 2.3.5 or later to view the online help, and view and verify the books you create with BookManager Build for Windows.
- A supported word processor file type

---

### 2.2 Migration from BookManager Build for Windows Version 2.2 to Version 2.3

BookManager Build for Windows Versions 2.2 and 2.3 cannot be installed on the same computer. If Build for Windows 2.2 is currently installed on your computer and you want to install Version 2.3, you have two options.

- **Manual installation** - you can manually uninstall Build for Windows Version 2.2, then install Build for Windows Version 2.3
- **Automatic installation** - install Build for Windows 2.3 and let it automatically uninstall Build for Windows Version 2.2

With either option, the Build for Windows 2.2 uninstall procedure is invoked to uninstall Version 2.2. This process will remove all Build for Windows Version 2.2 files and 'Sample' files that followed the original install path to, and including, the 'BIN' directory. As an exception, all customer files located within this path will NOT be removed. Any customer files located in the 'BOOK', 'NOTEBOOK', 'RULES', 'SOURCE', and 'WORKING', directories will be preserved. If you have changed any of the original



---

## 2.4 Using the File Conversion Utility

Build for Windows V2.3 uses the XML standard to make its Build Configuration Notebook and Build Style Mapping Rules files more human and computer readable as well as to provide for better error checking. A conversion utility has been included as part of Build for Windows 2.3 to convert your Build for Windows 2.2 Notebooks and Rules files to the new format. The rest of this section describes how to use the Conversion Utility.

### 2.4.1 Converting V2.2 Files

To start the Conversion Utility, select File Conversion Utility from the IBM BookManager Build group on the Start Menu. The Conversion Utility window will appear as follows.

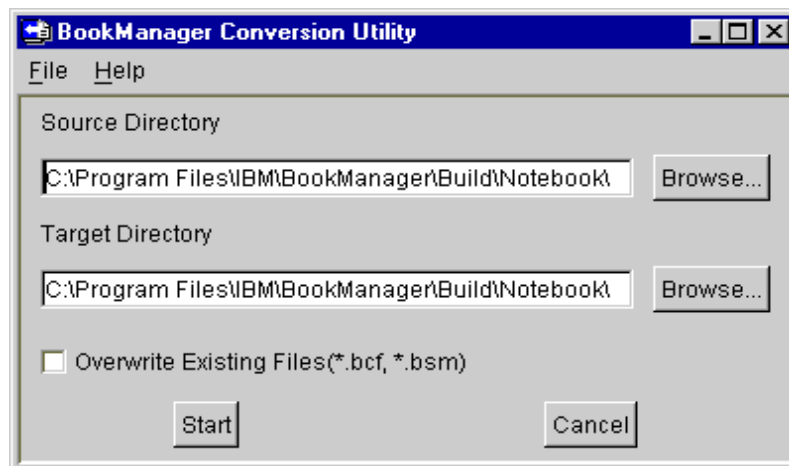


Figure 2-1. BookManager Conversion Utility Window

- Source Directory - This is the directory that will be searched for Version 2.2 files (Notebook .nbk and Rules .rul). Any such files found will be converted. The Browse Button can be used to select a directory from the File System. Note: The V2.2 files will not be automatically removed.
- Target Directory - This is the directory any converted files will be placed. This can be the same as the Source Directory. The Browse Button can be used to select a directory from the File System.
- Overwrite Existing Files(\*.bcf, \*.bsm) - Selecting this check box will cause the Conversion Utility to overwrite any .bcf or .bsm files with the same name as the ones being produced. If this check box is not selected, the files are still created but the file names will have the date and time added to them to provide uniqueness.
- Start Button - This will begin the Conversion Process. A progress Bar will open showing the conversion progress.
- Cancel Button - This will close the Conversion Utility window.

**Note:** There are two ways to convert a single V2.2 Notebook or Rules file.

1. The V2.2 file can be opened with Build for Windows V2.3 and saved as a V2.3 Build Configuration or Style Mapping file, see Chapter 5 Using Build for Windows.
2. The V2.2 file can be converted from the command line, see section 2.4.2 “Launching from a Command Line” on page 8.

## 2.4.2 Launching from a Command Line

This section describes how to start and use the Conversion Utility from a DOS Command Prompt. The following features are available from the command line.

- Start the Conversion Utility
- Convert a single V2.2 Notebook or Rules file
- Convert all V2.2 Notebook and Rules files in a specified directory
- Display a summary of the command line features

To use any of the command line features first follow these steps.

1. Open a DOS Command Prompt.
2. Navigate to the Build for Windows install directory. If Build for Windows is installed in the default directory, type:

```
cd "Program Files\IBM\IBM BookManager Build\bin"
```

**Note:** The Conversion Utility does not remove any Version 2.2 Notebook or Rules files after successful conversion.

**2.4.2.1 Start the Conversion Utility:** This feature will launch the Conversion Utility's application exactly in the same way as selecting the File Conversion Utility Icon from the Start Menu.

### Syntax:

To start the Conversion Utility from a command line, at the prompt type:

```
ezwcnvrt
```

### 2.4.2.2 Convert a Single V2.2 Notebook or Rules

**File:** This feature will convert one V2.2 Notebook or Rules file to its corresponding V2.3 Build Configuration or Style Mapping file. The new V2.3 file will be in the same directory and have the same name, but will have a different file extension, .bcf or .bsm instead of .nbk or .rul respectively. If a V2.3 file exists with the same fully qualified name as the new V2.3 file, then the date and time will be added to the beginning of the new V2.3 file name. If the -o option is used and a V2.3 file exists with the same fully qualified name as the new V2.3 file, the old V2.3 file will be replaced by the new V2.3 file.

### Syntax:

To convert a V2.2 Notebook file, at the DOS Prompt type:

```
ezwcnvrt -o -nbk filename
```

To convert a V2.2 Rules file, at the DOS Prompt type:

```
ezwcnvrt -o -rul filename
```

- Where -o is an optional parameter. If used, any old V2.3 Build Configuration or Style Mapping file with the same fully qualified name as the new V2.3 file, will be replaced by the new V2.3 file. Otherwise, the new V2.3 file will have the date and time added to its file name.
- Where filename is the fully qualified path name of the V2.2 file to be converted.

**Examples:**

- `ezwcnvrt -nbk "C:\Program Files\IBM\Bookmanager\Build\notebook\templwp.nbk"`
- `ezwcnvrt -rul "C:\Program Files\IBM\Bookmanager\Build\rules\templwp.rul"`
- `ezwcnvrt -o -nbk "C:\Program Files\IBM\Bookmanager\Build\notebook\templwp.nbk"`
- `ezwcnvrt -o -rul "C:\Program Files\IBM\Bookmanager\Build\rules\templwp.rul"`

**2.4.2.3 Convert all Version 2.2 Notebook and**

**Rules Files in a Specified Directory:** This feature will convert any Version 2.2 Notebook or Rules files found in a specified directory. The new V2.3 files can all be placed in a different directory if desired. If a Version 2.3 file exists with the same fully qualified name as the new V2.3 file, the date and time will be added to the beginning of the new V2.3 file name. If the -o option is used and a V2.3 file exists with the same fully qualified name as the new V2.3 file, the old V2.3 file will be replaced by the new V2.3 file.

**Syntax:**

To convert all V2.2 files in a specified directory, at the DOS Prompt type:

```
ezwcnvrt -o -s sourceDirectory -t destinationDirectory
```

- Where -o is an optional parameter. If used, any old V2.3 Build Configuration or Style Mapping file with the same fully qualified name as the new V2.3 file, will be replaced by the new V2.3 file. Otherwise, the new V2.3 file will have the date and time added to the beginning of its file name.
- Where sourceDirectory is the name of the directory containing V2.2 Notebook and Rules files.
- Where destinationDirectory is the destination directory of the new V2.3 Build Configuration and Style Mapping files. This can be the same as the sourceDirectory.

**Examples:**

- `ezwcnvrt -s "C:\Program Files\IBM\BookManager\Build\notebook\" -t "C:\Program Files\IBM\BookManager\Build\notebook\"`
- `ezwcnvrt -s "C:\Program Files\IBM\BookManager\Build\notebook\" -t "C:\My Build Configuration Files\"`
- `ezwcnvrt -o -s "C:\Program Files\IBM\BookManager\Build\notebook\" -t "C:\Program Files\IBM\BookManager\Build\notebook\"`
- `ezwcnvrt -o -s "C:\Program Files\IBM\BookManager\Build\notebook\" -t "C:\My Build Configuration Files\"`

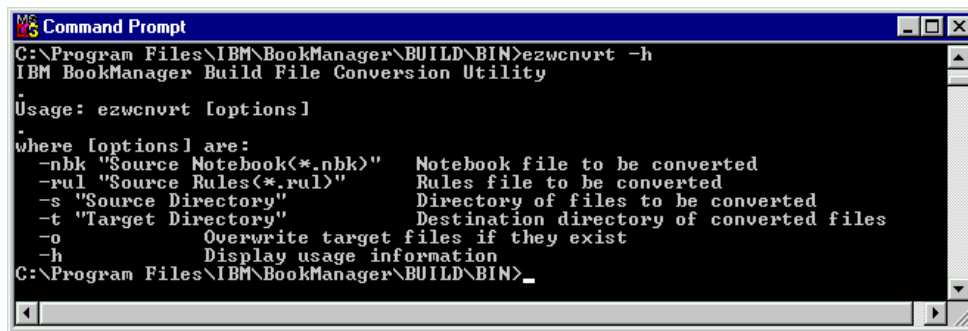
**2.4.2.4 Display a Summary of the Command**

**Line Features:** This feature will display a summary of the command line usage for the Conversion Utility.

**Syntax:**

```
ezwcnvrt -h
```

**Example:**



```
Command Prompt
C:\Program Files\IBM\BookManager\BUILD\BIN>ezwcnvrt -h
IBM BookManager Build File Conversion Utility

Usage: ezwcnvrt [options]

where [options] are:
  -nbk "Source Notebook(*.nbk)"  Notebook file to be converted
  -rul "Source Rules(*.rul)"     Rules file to be converted
  -s "Source Directory"          Directory of files to be converted
  -t "Target Directory"          Destination directory of converted files
  -o                             Overwrite target files if they exist
  -h                             Display usage information
C:\Program Files\IBM\BookManager\BUILD\BIN>
```

Figure 2-2. Command prompt Window



---

## Chapter 3. Starting Build for Windows

This chapter describes how to start BookManager Build for Windows. You can start Build for Windows from either the Windows Start Menu or the DOS Command Prompt.

---

### 3.1 Starting from the Windows Start Menu

1. On the Windows Task Bar, click on **Start->Programs->IBM BookManager Build->Build 2.3**.
2. Select the **Build 2.3** icon. The first time you start Build for Windows, an untitled build configuration file is opened. After that, each time you start Build for Windows, the build configuration file that was active most recently is opened.

---

### 3.2 Starting from a Command Line

This section describes how to start and use Build for Windows from a DOS Command Prompt.

To start Build for Windows from a command line:

1. Open a **DOS Command Prompt**.
2. Navigate to the Build for Windows install directory. If Build for Windows is installed in the default directory, typically you would type: *cd "Program Files\IBM\IBM Bookmanager Build\bin"*
3. Type `buildwp` to start Build for Windows.

See Advanced Command Line Features for a detailed description of all command line features including using Build for Windows in "Batch" mode.

**Note:** Build for Windows will open the last Build Configuration File used or will create a new Configuration File called `Untitled.bcf` if the last one can not be found.

---

### 3.3 Getting Started with BUILD for Windows V2.3

#### Starting the Build for Windows V2.3 program

After starting Build for Windows, you are ready to create Build Configuration Files and build soft copy books.

1. From Windows **Start**, select **Programs**.
2. Select **IBM BookManager Build**, then **Build 2.3**.  
The **IBM BookManager Build** panel will be displayed
3. From the **File** drop-down menu, select **Open**.  
The **Open** panel will be displayed.
4. From the **Look in** drop down menu, select a directory containing Build Configuration files (\*.bcf). Select from the list of Build Configuration files the file you wish to open, and click **Open**.  
Some demonstration bcf files have been installed in:  
[drive]:\Program Files\IBM\IBM BookManager Build\Notebook.
5. You can either accept the pre-selected **Source**, **Destination** and **Style Mapping files**, or change them by selecting the **Browse** buttons associated with the respective windows. (This will display another **Open** panel, allowing you to repeat

step 4 to locate an appropriate **Source**, **Destination** (.boo), and **Style Mapping**(\*bsm) files. Some demonstration files have been installed in:

- [drive]:\Program Files\IBM\IBM BookManager Build\Source
- [drive]:\Program Files\IBM\IBM BookManager Build\Rules

6. From the **Build** drop-down menu, select **Build**.
7. If you would like your built book to be immediately displayed, select the **Options** drop-down menu, then select **Build Options**. The **BookManager Build Options** panel will be displayed. Click on **Start SoftCopy Reader**, then **Apply**, and **OK**. Repeat step 6.

For more information about Build for Windows files, see Chapter 4, “Working with Build for Windows Files” on page 13.

For information about using Build for Windows functions or performing Build for Windows procedures, see Chapter 5, “Using Build for Windows” on page 17.

---

## Chapter 4. Working with Build for Windows Files

This chapter describes the Build for Windows files and the information you can specify in them.

Build for Windows has two files which you can use to specify information for Build for Windows to use. These files are defined as follows:

### **Build Configuration File**

A Build for Windows "build configuration file" identifies the:

- Source document you are building
- "Style mapping file" that Build for Windows should use
- Name of the softcopy book to be built
- Any additional document elements you want Build for Windows to include in the softcopy book

### **Build Style Mapping File**

The Style Mapping File determines how Build for Windows maps style elements in a source document for display in a softcopy book.

---

### 4.1 Build Configuration File - for Specifying Document Information

A build configuration file contains the information necessary for Build for Windows to build a softcopy book. You can create as many build configuration files as you need. You use only one build configuration file when building a softcopy book. You can access the build configuration files using the **File** pull-down menu.

The following list describes the sections in a build configuration file and the information you can specify from them:

#### **Sections of the build configuration file:**

##### **General -**

Specifies the filenames of the:

- Source document
- Softcopy book to be created
- Style mapping file

##### **Details -**

This section is divided into two sections that specify additional document elements you want Build for Windows to include in the softcopy book.

1. The first page specifies whether to include a table of contents, list of figures, and list of tables.
2. The second page specifies whether to include a title page with the title, author's name, and other information.

##### **Options -**

Specifies additional processing options, such as whether to include graphics.

##### **Messages -**

Contains messages Build for Windows issues for the most recently built softcopy book associated with a build configuration file.

### Help for Build Configuration Files

If you want to learn more about build configuration files, select one of the following items:

- Creating a build configuration file, see: 5.1.1 "Menu Bar" on page 18
- Opening a build configuration file, see: 5.1.1 "Menu Bar" on page 18
- Saving a build configuration file with a new name, see: 5.1.1 "Menu Bar" on page 18

---

## 4.2 Style Mapping File - for Defining Element Mapping

Before building softcopy books, you must define how you want Build for Windows to map certain document elements in your source document. These element mapping rules ensure that document elements which BookManager READ handles in a specific way are built correctly. For example, you can specify how you want Build for Windows to map certain text in your source document, such as a heading, caution, or figure caption. In the softcopy book, these document elements are either displayed in a specific way, or they have hypertext linking capabilities.

You must specify that you want Build for Windows to map an element based on a word-processing style used to format the element. The element map rules for a particular source document are defined in a "style mapping file".

You can access style mapping files from the **Style Mapping** pull-down menu. Although you can create as many style mapping files as you want, you can use only one of these style mapping files for each softcopy book you build.

For example, you might have several documents all produced from Microsoft Word, but each one uses a different set of styles. In this case, create separate style mapping files containing rules for recognizing document elements in each document. Specify the style mapping file and source document when building each softcopy book.

As another example, you might have several source documents that all use the same set of styles. In that case, you can create one style mapping file for all these source documents.

The following list describes the sections in a style mapping file and the information you can specify in them:

### Sections of a style mapping file:

Headings - Defines how Build for Windows maps headings in the source document.

Examples - Defines how Build for Windows maps examples.

Captions - Defines how Build for Windows maps figure captions and table captions.

Alerts - Defines how Build for Windows maps dangers, warnings, cautions, and notes.

Lists - Defines how Build for Windows maps glossary lists and definition lists.

Links - Defines how Build for Windows maps application launch links and cross-book links.

Hidden Text - Defines how Build for Windows defines text or sections of the document not to be included in the softcopy books.

**Help for Style Mapping files**

If you want to learn more about style mapping files, select one of the following items:

- Creating a style mapping file, see: 5.6.2 “Menu Bar” on page 28
- Opening a style mapping file, see: 5.6.2 “Menu Bar” on page 28
- Saving a style mapping file with a new name, see: 5.6.2 “Menu Bar” on page 28



## Chapter 5. Using Build for Windows

This chapter describes all of the windows that will be displayed and components found in Build for Windows, and how to use them. The following sections will be described:

- 5.1 “Main Window”
- 5.2 “Build Options Window” on page 21
- 5.3 “Messages Window” on page 22
- 5.4 “Build Progress Window” on page 23
- 5.5 “Build List Window” on page 24
- 5.6 “Style Mapping Window” on page 27
- 5.7 “Advanced Command Line Features” on page 31

### 5.1 Main Window

The main window, shown in Figure 5-1, will be the first thing you see when you start the Build for Windows Application. The title of the window will always be the name of the current Build Configuration Notebook you are working with. Build for Windows will always start with the last Notebook used or Untitled.bcf if the last Notebook cannot be found.

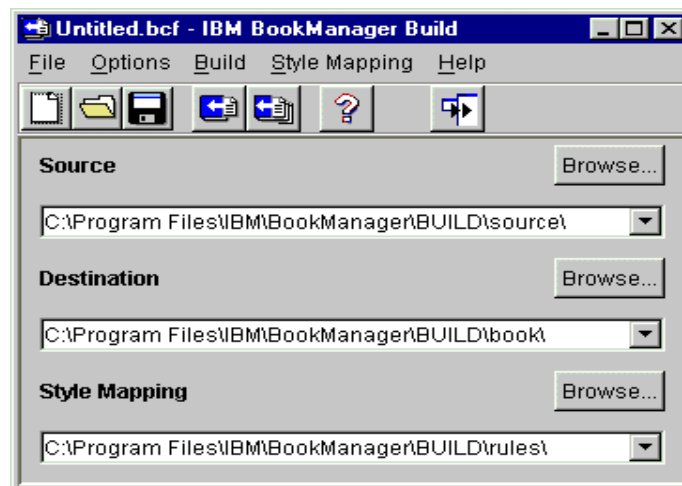


Figure 5-1. Main Window - with details hidden

Figure 5-2 on page 18 shows the main window with all its components, each of which will be described in the following sections.

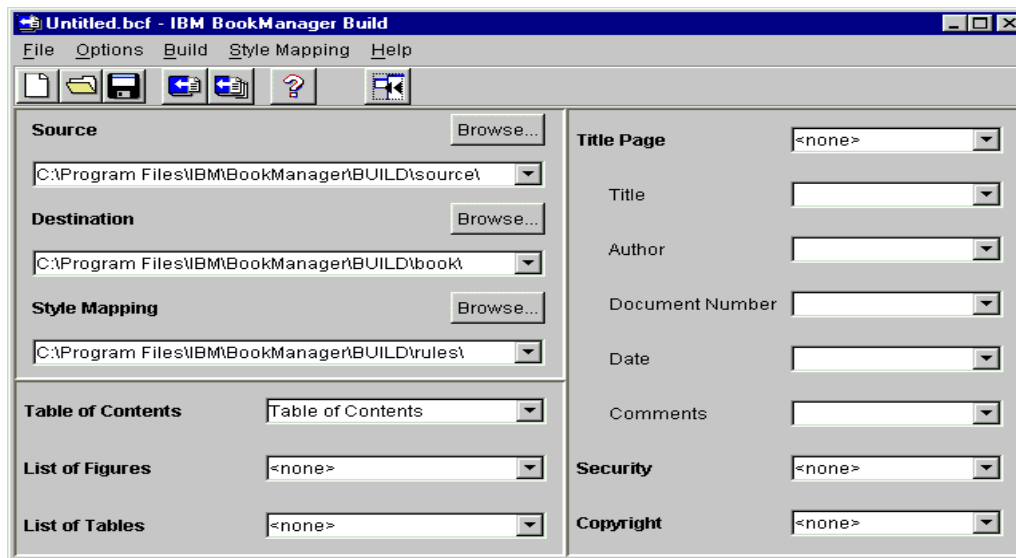


Figure 5-2. Main Window - with details shown

## 5.1.1 Menu Bar

The Menu Bar consists of five pull-down menus: File, Options, Build, Style Mapping and the Help Menu.

### File Menu

- **New** – Creates a new Build Configuration file, named Untitled.bcf. If you try to save Untitled.bcf you will be prompted for a new name. If you have made any changes to the current Build Configuration file you will be prompted to save those changes when you select New.
- **Open (ctrl+O)\*** – Opens an existing Build Configuration file. A window will be launched that allows you to select a Build Configuration file from the file system. This selection also prompts you to save any changes made to the current Build Configuration file.

**Note:** You can open a Build for Windows V2.2 Notebook (\*.nbk) but you will have to save it as a V2.3 Build Configuration file (\*.bcf).

- **Save (ctrl+S)** – Saves the current Build Configuration file.
- **Save As** – Allows you to save the current Build Configuration file to a new name or location. A window is launched that provides this ability.
- **Exit** – This will close the Build for Windows Application. If changes have been made to the current Build Configuration file, you will be prompted to save them.

### Options Menu

- **Show Book Details (ctrl+E)** - This option is available when the book details are hidden, as shown in Figure 5-1 on page 17. Selecting this option will increase the size of the window and show the Book Details. These include Title Page, Table of Contents, Copyright and other information, as shown in Figure 5-2.
- **Hide Book Details (ctrl+E)** – This option is available when the book details are visible, as shown in Figure 5-2. Selecting this option will return the Main Window to its original state showing only the Source, Destination, and Style Mapping.
- **Build Options** – This option will open the Build Options Window.
- **View Messages** – This option will open the Messages Window. The messages from the last Build will be shown.



- Clear History – This Option will clear the history of the pull-down lists for the Main Window. All items except the currently selected item will be removed, except for the item <none> were appropriate. See 5.1.3 “Data Fields” on page 20 for more information on using the pull-down lists.

### Build Menu

- Build (ctrl+B) – This option will start the Build Process. First the Build Configuration data fields will be validated, then the Build Progress Window will be shown to monitor messages and progress. See 5.4 “Build Progress Window” on page 23 for more information.
- Build List (ctrl+L) – This option will open the Build List Window which allows you to build multiple books at once.

### Style Mapping Menu

- New Style Mapping – Open up the Style Mapping Window to a new Style Mapping file called Untitled.bsm.
- Open [filename] – Opens the Style Mapping Window to the file indicated in the Main Window’s Style Mapping field. If this file does not exist the behavior is the same as for New Style Mapping.
- Open Other Style Mapping – This option allows you to select a different Style Mapping file to open, and then opens the Style Mapping Window to this file.

### Help Menu

- Getting Started - Starts the IBM SoftCopy Reader for Windows program, which in turn opens up the "IBM BookManager Build for Windows: Getting Started" book (this book) to Appendix A, “Guide for Building Softcopy Books with BookManager Build for Windows 2.3” on page 39.
- Help (ctrl+H or F1) – (Context-sensitive Help) This Option applies to the currently selected window and will open up this Book to the section related to the specific window.
- About BookManager Build – Information pertaining to the current version and service level, copyright notices, and links to appropriate Web sites.

## 5.1.2 Toolbar

The Toolbar provides shortcuts for many of the Menu Bar items.



New Build Configuration File - Shortcut for New Menu Item.



Open Build Configuration File – Shortcut for Open Menu Item.



Save Build Configuration File – Shortcut for Save Menu Item.



Start Build Process – Shortcut for Build Menu Item.



Open build List Window – Shortcut for Build List Menu Item.



Help – Shortcut for the Help Menu Item.



Show Book Details – Shortcut for Show Book Details Menu Item.



Hide Book Details – Shortcut for Hide Book Details Menu Item.

### 5.1.3 Data Fields

All of the data fields on the Main Window have a text field and a pull-down list. These two items are collectively called a Combo Box. You can edit the text in the text field as well as using Cut (ctrl-x), Copy (ctrl-c), and Paste (ctrl-v). The pull-down list maintains a history of the most recently used items. Some of the pull-down lists always have <none> as an option. In this case selecting <none> indicates that you don't want to include this item in your BookManager Book. The following is a description of each data field.

- Source – The source field indicates the word-processing document you wish to build into a BookManager Book.
- Destination – The destination field indicates the name and location of the BookManager Book you wish to build. Unless you modify the destination field, it will be automatically updated when you select a Source Document. The default behavior for this field also enforces an eight dot three naming convention to make your BookManager Book compatible with other systems. See 5.2 "Build Options Window" on page 21 for more information.
- Style Mapping – This field indicates which Style Mapping file you wish to use when building your BookManager Book. See 5.6 "Style Mapping Window" on page 27 for more information.

The following fields are visible only by selecting "Show Book Details" from the Options pull-down menu.

- Table of Contents – This field (maximum of 128 characters) indicates what you wish to name the Table of Contents section of the Book you are building. If <none> is selected then no Table of Contents will be generated.
- List of Figures – This field (maximum of 128 characters) indicates what you wish to name the List of Figures section of the Book you are building. If <none> is selected then no List of Figures will be generated.
- List of Tables – This field (maximum of 128 characters) indicates what you wish to name the List of Tables section of the Book you are building. If <none> is selected then no List of Figures will be generated.
- Title Page – This field (maximum of 128 characters) indicates what you wish to name the Title Page of the Book you are building. If <none> is selected then no Title Page will be generated. The following fields will be displayed under Title Page.
  - Title – This field (maximum of 128 characters) is the title of the Source Document.
  - Author – This field (maximum of 128 characters) specifies the Author of the Source Document.
  - Document Number – This is a unique identifier for this book. Illegal characters include: space, tab, new line, equal sign, forward slash, backward slash, pipe, colon, pound, less than, greater than, ampersand, double quotation, question mark, plus sign, period, and asterisk. This field has a maximum of 128 characters.
  - Date – This field (maximum of 128 characters) is the last modified date of the source document.
  - Comments – User Comments, limited to 126 characters.
- Security – This field (maximum of 128 characters) contains the Security Statement of the document. If <none> is selected then no security statements will be made.
- Copyright – This field (maximum of 128 characters) contains the Copyright Statement of the document. If <none> is selected then no copyright will be specified.

**Note:** The BookManager Readers will display either the Copyright Statement, or the Security Statement. In the event the Book contains both a Security Statement and a Copyright Statement, only the Security Statement will be displayed.

---

## 5.2 Build Options Window

The following list describes the fields in the build options window and the information you can specify in them. These items, except for Softcopy Reader Systems Directory, are stored uniquely for each build configuration file.

Dictionary - Specify the dictionary to use.

Code Page - Specify which code page to use.

Build working directory - Specify the directory that Build uses for its temporary files.

Softcopy Reader System Directory - The system directory for the Softcopy Reader product. Softcopy Reader is needed to view Build for window's online help and to verify newly created Softcopy books.

**Note:** This field is set automatically during installation and should only be changed if you have moved or re-installed Softcopy Reader to a new location. In this case, enter the new system directory or use the browse button to locate the new system directory. The Softcopy Reader system directory always ends with the directory path name component "\sys\". The default system directory is "C:\Program Files\IBM\SCR\sys\".

Start Softcopy Reader - If checked, starts Softcopy Reader so you can view the new book upon completion of build process.

Include Graphics - If checked, graphics are included in the book.

Continue with Missing References - If checked, continue the build process when missing references are found.

Use 8.3 Naming - If checked, enforces 8.3 naming for the destination book file. This is important if your book is to be viewed on many different platforms.

The Build Options Window can be accessed from the Options menu. Figure 5-3 on page 22 shows the Build Options Window. The build options apply individually to each book. They are stored in the Build Configuration file.

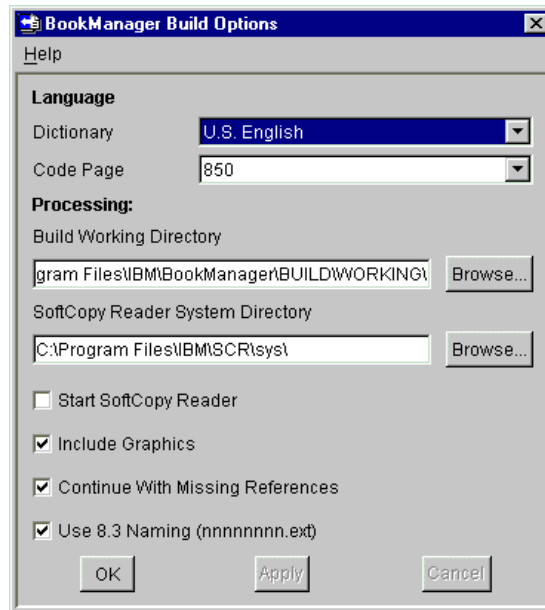


Figure 5-3. Build Options Window

## 5.3 Messages Window

The Messages Window, shown in Figure 5-4, allows you to view the messages of the last Build for this Build Configuration.

**Get specific information about each message** by double clicking on the message. The *Build for Windows Messages and Codes* softcopy book will be opened and you will be taken directly to the message. You will see an explanation of the message, system action, and user response (what you should do).

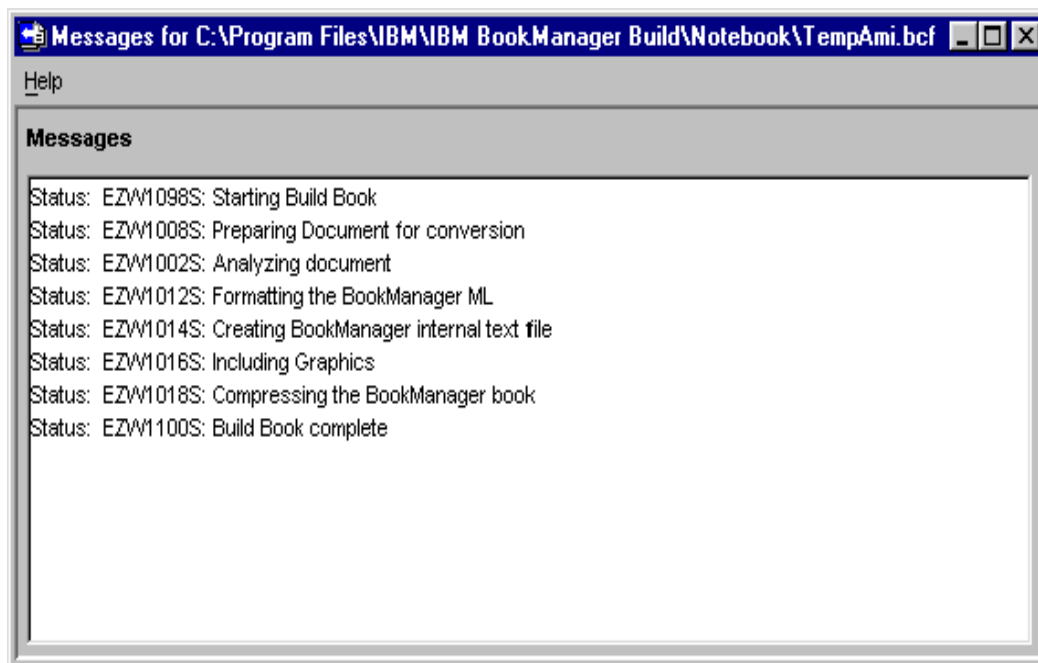


Figure 5-4. Messages Window

- Title Bar – The title bar will always show the current Build Configuration that you are working with.
- Help Menu – This Menu will open up this book to the section on the Messages Window.
- Messages List – The Messages List shows any messages received during the Build Process. There are three types of messages:
  - **Status** messages are designed to keep you informed of how the Build Process is progressing.
  - **Warning** messages indicate something is wrong and generally the Build Process will continue.
  - **Error** Messages indicate something is wrong and Build cannot continue processing.

For more information on a specific message, double click on that message and Softcopy Reader will display the message in the Messages and Codes book.

---

## 5.4 Build Progress Window

When building a Softcopy book, the Build Progress Window will be displayed, see Figure 5-5 on page 24. The Build Progress Window will display all the messages received in processing the source document and the overall progress. This section describes the features of the Build Progress Window.

- Title Bar - The title bar shows the approximate overall progress and the Build Configuration file for the Softcopy book currently being built.
- Help Menu - The Help Menu contains one item, **Help** -- selecting it launches the Softcopy Reader which displays the "Build Progress Window" section of the Getting Started Book.
- Message List - The message list displays all the messages received while processing the source document. To find out more information about a specific message, double click on the message. Softcopy Reader will open the Build for Windows Messages and Codes book to the appropriate message. For each message, the Messages and Codes book contains an explanation of the message, system action, and appropriate user response (what you should do).
- Progress Bar - The progress bar shows the approximate overall progress of the build process currently running.
- Cancel Button - Pressing the **Cancel** Button at any time during the build process will cancel the build process currently running. If the build has been terminated by the user or has completed, the **Cancel** Button will change to an **OK** Button. Clicking the **OK** Button will close the Build Progress Window.

**Note:** The Build Progress Window can not be closed as long as a build is in progress.

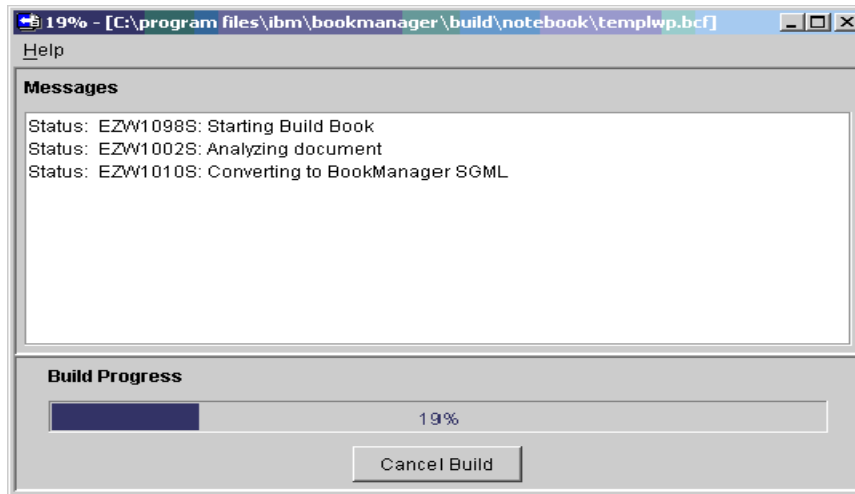


Figure 5-5. Build Progress Window

## 5.5 Build List Window

The Build List Window gives you the ability to build many BookManager Books at the same time. Figure 5-6 shows a typical Build List Window. The rest of this section describes the features of the Build List Window.

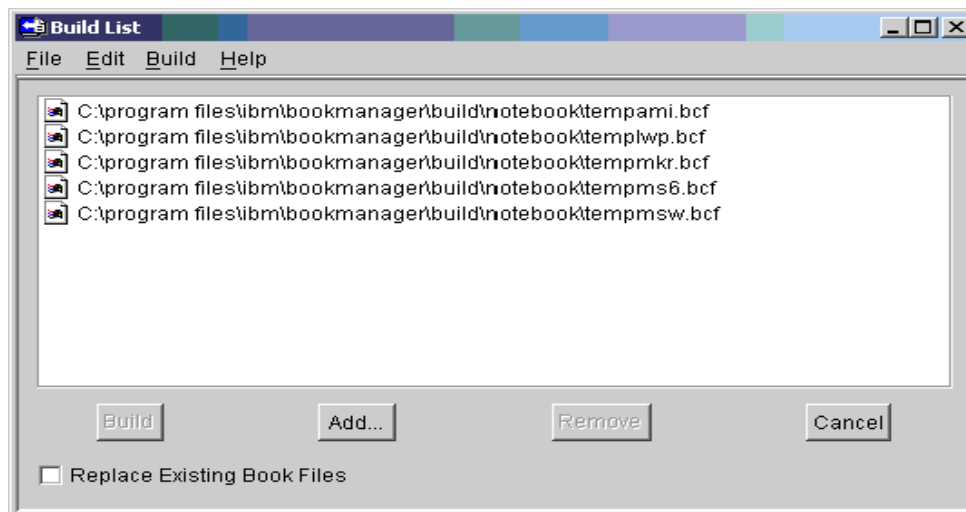


Figure 5-6. Build List Window

### 5.5.1 Menu Bar

#### File Menu

- Close – This item closes the Build List Window. If a Build is in Progress, the window cannot be closed, it can however be minimized and the progress will show on the Application Icon.

#### Edit Menu

- Add – This menu item opens a browse window that allows you to select files to add to the file list.
- Remove (delete) – This menu item removes any selected files from the file list.

- Select All – This menu item selects all the files in the file list.

#### Build Menu

- Build (ctrl+B) – This menu item will build the selected files from the list of files. When a build list starts, a Build List Progress Window will be displayed, see Figure 5-7 on page 27

#### Help Menu

- User's Guide (ctrl+H) – This menu item will launch SoftCopy Reader, which will display the "Build List Window" section of the Getting Started book.

## 5.5.2 Build List

The Build List Window is a list of Build Configuration files (.bcf). These files are kept in alphabetical order for ease of use. Files can be added to this list in the following ways.

- Add Menu Item – Described above in the Edit Menu section.
- Add Button – Described below in the Build List Buttons Section.

The following file selection mechanisms are provided to select the books in the list to build.

- Select All – This menu item found under the Edit Menu selects all the files in the list.
- Select One - Using the mouse you can select any one of the files in the list.
- Select Range – By holding down the Shift key you can select a range of files from the list.
- Select Specific – By holding down the Ctrl key you can select any number of specific files in the list.

Drag and Drop – The Build List Window also supports drag and drop operations from Windows Explorer. You can Drag and Drop single files or directories of files. You can do this from Windows Explorer by clicking on the file or directory you wish to add. Then, while holding down the left mouse button, move the mouse over the Build List Window and release the left mouse button. Only files with the extension .bcf will be added.

## 5.5.3 Build List Buttons

- **Build Button** – This button is a shortcut for the Build Menu Item. It will start the Build process building any selected files from the Build List Window.
- **Add Button** – This button is a shortcut for the Add Menu Item. It will launch a browse window, which allows you to add files to the Build List Window.
- **Remove Button** – This button is a shortcut for the Remove Menu Item. This button will remove any selected files
- **Cancel Button** – This button will close the Build List Window, it will NOT cancel a Build that is in progress. There will be a Cancel Button on the Build List Progress Window that will terminate the Build process.

## 5.5.4 Replace Existing Book Files - Check Box

If the **Replace Existing Book Files** check box is selected, then any current Book file with the same name and location as the Destination Field in the Build Configuration will be replaced with the newly created Book. If this check box is not selected and the above situation occurs, the new Book will not be built and an error message will be displayed that the Book already exists.

## 5.5.5 Build List Progress Window

When the Build Process begins, the Build List Progress Window is displayed, as shown in Figure 5-7 on page 27. During processing, all of the messages received in processing the source documents and Build Configuration files will be displayed in the window. In addition, you will see a bar that shows the overall progress. This section describes the features of the Build List Progress Window.

- **Minimizing** - The Build List Progress Window itself cannot be minimized. But, by minimizing the Build List Window, both it and the Build List Progress Windows will be minimized. Both windows will also be displayed again if you restore the Build List Window.
- **Help** - This menu item will launch Softcopy Reader, which will display the "Build List Progress Window" section of the Getting Started book.
- **Message List** - The message list displays all the messages received while processing the Build Configuration File and source documents. To find out more information about a specific message, double click on the message. Softcopy Reader will open the Build for Windows Messages and Codes book to the appropriate message. For each message, the Messages and Codes book contains an explanation of the message, system action, and appropriate user response (what you should do).

**Note:** Some of the messages displayed do not have corresponding message numbers and therefore will not have entries in the Messages and Codes book. These messages are either status messages or error messages generated when validating the data in the Build Configuration file. These messages should be very explicit and understandable.

- **Progress Label** - The label above the progress bar states which Build Configuration file is being used to build the softcopy book. This label also indicates the number of this Build Configuration and the total number of Build Configuration files being built.
- **Progress Bar** - The progress bar shows the approximate overall progress of the build list process.
- **Cancel Build Button** - Pressing the **Cancel Build** Button at any time will cancel the build list process. If the build has been terminated by the user or has completed, the **Cancel Build** Button will change to an **OK** Button. Clicking the **OK** Button will close the Build List Progress Window.



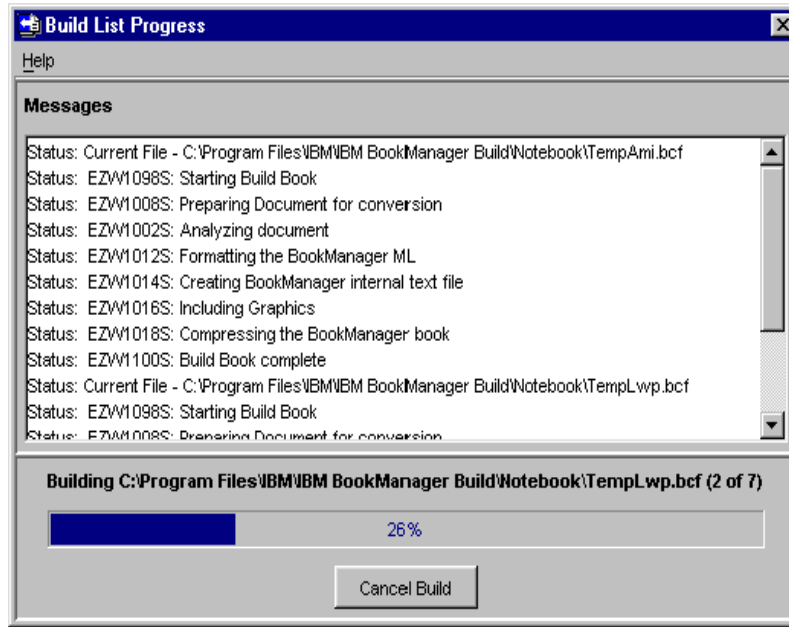


Figure 5-7. Build List Progress Window

## 5.6 Style Mapping Window

The Style Mapping window defines the Source Style to Book Style mapping. To be more specific, Build allows you to map certain styles in your Source Document to styles that are supported by BookManager Books. A typical Style Mapping Window is shown in Figure 5-8. The remainder of this section will describe how to use the Style Mapping Window.

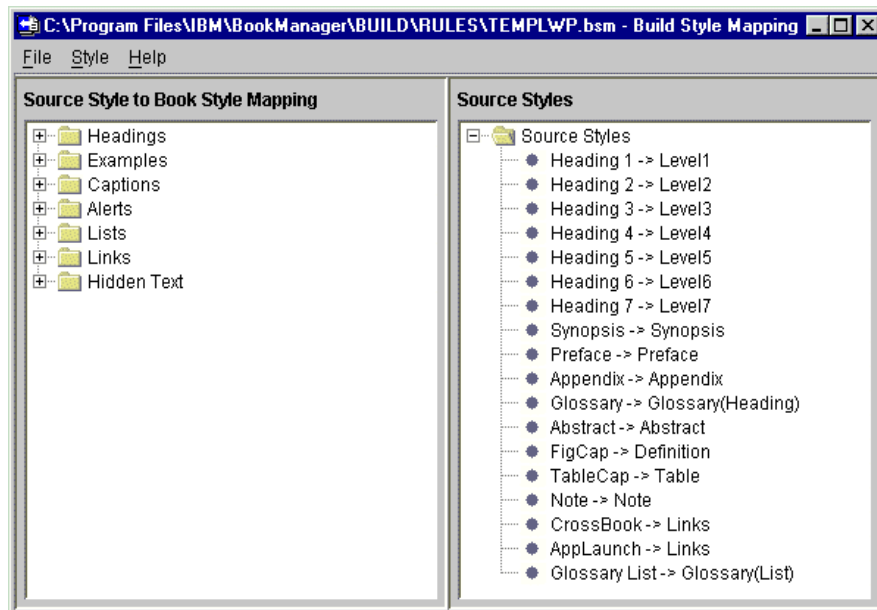


Figure 5-8. Style Mapping Window

## 5.6.1 Title Bar

The title for the Style Mapping Window indicates the current Build Style Mapping file or Untitled.bsm (if a file name has not yet been specified).

## 5.6.2 Menu Bar

### File Menu

- New - Creates a new Style Mapping file named Untitled.bsm. You will have to specify a name to save this file.
- Open (ctrl+O) – This menu item opens a Browse Window, which allows you to open a specific Style Mapping file.  
**Note:** You can open a Build for Windows V2.2 Rules Notebook (.rul) but you will have to save it as V2.3 Build Style Mapping file (.bsm).
- Save (ctrl+S) – This item will save the current Style Mapping file.
- Save As – This item will save the current Style Mapping file to a file name and location of your choice.
- Close – This item will close the Rules Window. If any changes have been made to the current Style Mapping file you will be prompted to save those changes.

### Style Menu

- Source Style Menu
  - New Source Style (ctrl+N) – This menu item will open the New Source Style Dialog, which allows you to specify a new Source Style for mapping. Double clicking on the Folder item Source has the same effect as selecting this item. The new style is added to the Source Style Tree.
  - Edit Source Style (ctrl+E) – This menu item will open the Edit Source Style Dialog showing the style information of the currently selected Source Style. Double clicking on a Source Style in the Source Style Tree has the same effect as selecting this item.

### Help menu

- Help (ctrl+H) – This menu item will launch Softcopy Reader and display the "Style Mapping Window" section of the Getting Started book.

## 5.6.3 Book Style Tree

The Book Style Tree is a graphical representation of all the styles supported by BookManager Books. The styles are grouped by category. To view the styles in a category click on the + sign next to the Folder representing that category and the Folder will expand showing the styles. The Examples and Links folders are Book Styles, not categories for Book Styles. The styles are in the following categories:

### Category: Headings

- Level 1
- Level 2
- Level 3
- Level 4
- Level 5
- Level 6
- Level 7
- Synopsis

- Preface
- Appendix
- Glossary
- Abstract

**Category: Captions**

- Tables
- Figures

**Category: Alerts**

- Danger
- Warning
- Caution
- Note

**Category: Lists**

- Definition
- Glossary (LIST)

**No Category**

- Examples
- Links
- Hidden Text

See 5.6.5 “Mapping Styles” for more information on using the Book Style Tree.

## 5.6.4 Source Style Tree

The Source Style Tree maintains a graphical representation of styles used in your word-processing document. You create the styles, which must be exact copies of the style name used in the source document. Once you create a style, it will be retained for later use. Style names must be mapped to Book styles on a one-to-one basis. Build will monitor this and inform you if there are conflicts.

Creating/Editing/Removing styles

- To create a style, select the Style>Source Style > New Style from the menu bar or double click on the Source Folder in the Source Style Tree.
- To edit a current style, select the style then select Style > Source Style > Edit Style from the menu bar or double click on the Style.
- To remove a style from the Source Style Tree, select the style then press the Delete key. You will be asked to confirm that you wish to delete the style.

## 5.6.5 Mapping Styles

To map a Source Style to a Book Style, simply drag-and-drop the Source Style from the Source Style Tree to the Book Style in the Book Style Tree. The mapped Style will show up in the Book Style Tree as a Bullet with the Style Name. The Source Style Tree will show the Source Style with an arrow and the Book Style it is mapped to, see Figure 5-9 on page 30.

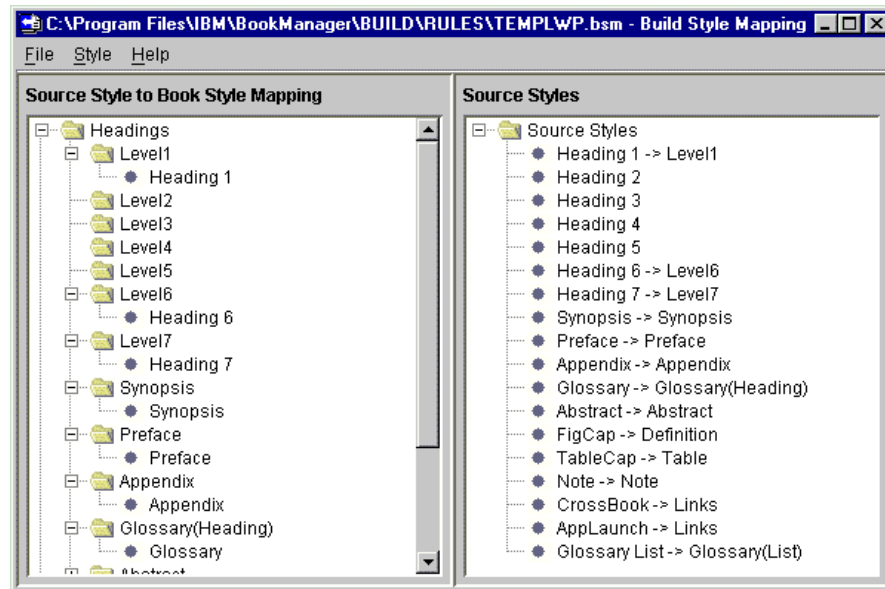


Figure 5-9. Source Style Tree

To map this Source Style to a different Book Style drag-and-drop either the mapped Source Style (Bullet) or the original Source Style to the new Book Style. The Bullet will be removed from the old Book Style and placed under the new Book Style and the original Source Style will indicate the new mapping with an arrow and the new Book Style, see Figure 5-10.

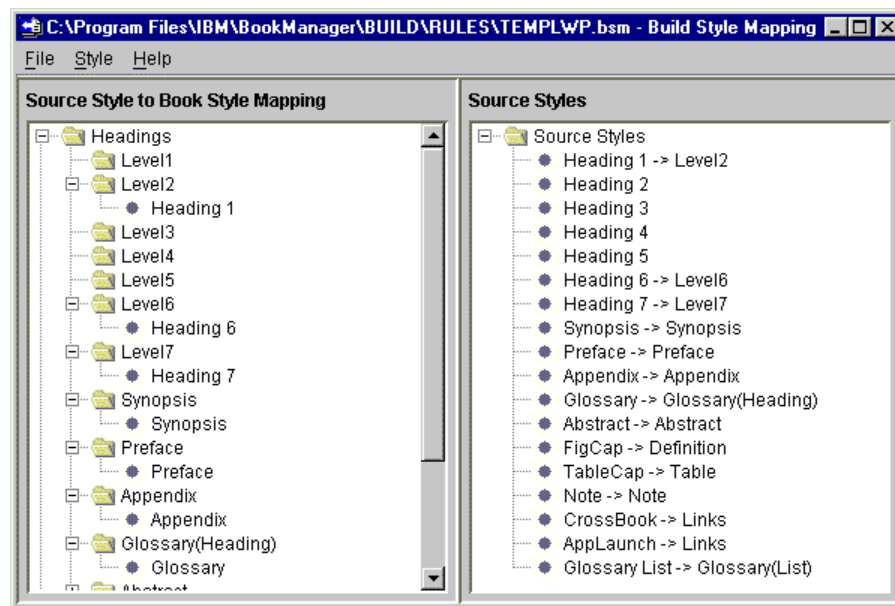


Figure 5-10. Book Style

Each Source Style can **only** be mapped to one Book Style. Each Book Style however can have several Source Styles mapped to it, see Figure 5-11 on page 31. To remove a mapped Source Style from the Book Style Tree select the mapped Source Style and press the Delete key. This will remove the Source Style from the Book Style Tree only, to remove the Source Style completely from the Rules Window select the Source Style in the Source Style Tree and press the Delete Key.

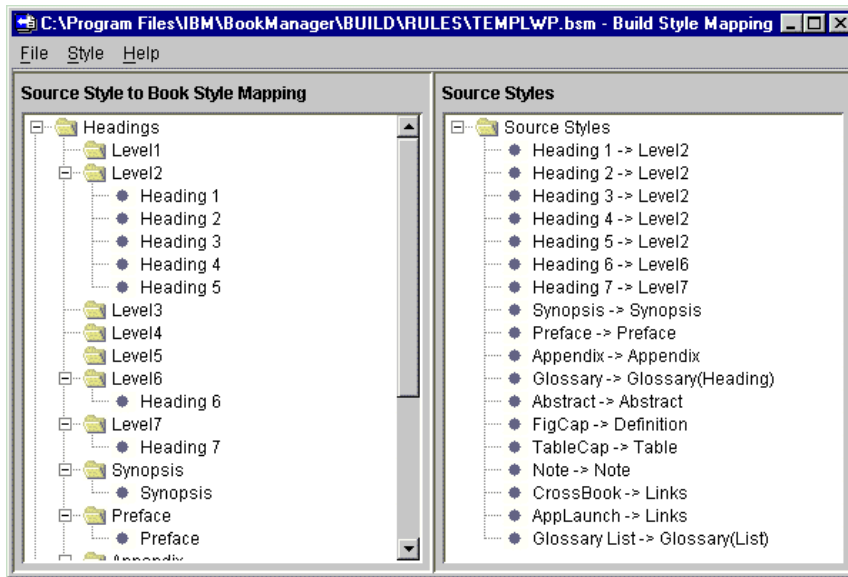


Figure 5-11. Book Style - with several Source Styles

## 5.7 Advanced Command Line Features

There are several advanced features for using Build for Windows from the command line. The following features increase the flexibility and power of Build for Windows:

- 
- Start Build for Windows - opening a specific Build Configuration File.
- Start Build for Windows - opening a specific Build Configuration File and building the specified Softcopy book.
- Start Build for Windows - opening up the Build List Window to a number of Build Configuration Files and building the specified Softcopy books.
- Build a Softcopy book specified in a Build Configuration File - without starting the Build for Windows User Interface.
- Build a number of Softcopy books specified in a number of Build Configuration Files - without starting the Build for Windows User Interface.
- Display a summary of Command Line Features.

**Note:** When using any of the Build for Windows command line features first open a DOS Command Prompt and navigate to the Build for Windows installation directory as follows:

1. Open a DOS Command Prompt.
2. Navigate to the Build for Windows install directory. If Build for Windows is installed in the default directory, type:

```
cd "Program Files\IBM\IBM Bookmanager Build\bin"
```

### 5.7.1 Start Build for Windows - Opening a Specific Build Configuration File

With this option, the Build for Windows interface is opened up to the specified Build Configuration File.

**Syntax:**

To start Build for Windows to a specific Build Configuration File, at the DOS Prompt type:

buildwp filename - where filename is the fully qualified name of a Build Configuration File including the extension in quotation marks.

**Example:**

```
buildwp "C:\Program Files\IBM\IBM Bookmanager Build\notebook\templwp.bcf"
```

## 5.7.2 Start Build for Windows - Opening a Specific Build Configuration File and Building the Specified Softcopy Book

With this option, the Build for Windows interface is opened to the specified Build Configuration File and the Build Process is started for the Build Configuration File. As part of the Build Process the data in the Build Configuration File is validated and any errors will be reported through pop up messages. If there are no errors in the Build Configuration File, then the Build Progress Window is displayed where status and errors in processing the Source document will be displayed.

**Syntax:**

To start Build for Windows opening a specific Build Configuration File and building the specified Softcopy book, at the DOS Prompt type:

buildwp -b filename - where filename is the fully qualified name of a Build Configuration File including the extension in quotation marks.

**Example:**

```
buildwp -b "C:\Program Files\IBM\IBM BookManager Build\notebook\templwp.bcf"
```

## 5.7.3 Start Build for Windows - Opening up the Build List Window to a Number of Build Configuration Files and Building the Specified Softcopy Books

This option will start Build for Windows, open up the Build List Window and populate the list of files with any Build Configuration Files specified on the command line and/or with any Build Configuration Files in the directories specified on the command line. All the Build Configuration Files in the list of files are then selected and the Build List Process is started. The Build List Process will start the Build Process on each Build Configuration File one at a time in alphabetical order building a Softcopy book for each Build Configuration File. The Build List Progress Window will be displayed which will provide progress information, status, warning, and error messages.

**Syntax:**

To Start Build for Windows opening up the Build List Window to a number of Build Configuration Files and building the specified Softcopy books, at the DOS Prompt type:

```
buildwp -o -bl filename(s) and or directoryName(s)
```

- Where -o is an optional parameter. If you used any Softcopy books with the same name as the one being built, it will be replaced with the new Softcopy book, otherwise an error message will be displayed and the Softcopy book will not be built.

- Where filename(s) and or directoryName(s) is a space separated list of Build Configuration Files and/or directories containing Build Configuration Files, each contained in quotation marks.

**Examples:**

- `buildwp -bl "C:\Program Files\IBM\IBM Bookmanager Build\notebook\"`
- `buildwp -bl "C:\Configuration Files\myfile.bcf" "C:\Program Files\IBM\IBM Bookmanager Build\notebook\templwp.bcf"`
- `buildwp -bl "C:\Configuration Files\myfile.bcf" "C:\Program Files\IBM\IBM Bookmanager Build\notebook\"`
- `buildwp -o -bl "C:\Program Files\IBM\IBM Bookmanager Build\notebook\"`
- `buildwp -o -bl "C:\Configuration Files\myfile.bcf" "C:\Program Files\IBM\IBM Bookmanager Build\notebook\templwp.bcf"`
- `buildwp -o -bl "C:\Configuration Files\myfile.bcf" "C:\Program Files\IBM\IBM Bookmanager Build\notebook\"`

### 5.7.4 Build a Softcopy Book Specified in a Build Configuration File - Without Starting the Build for Windows User Interface

This feature will Build the Softcopy book specified by the Build Configuration File included on the command line. The Build for Windows user interface will not be started. Any error messages will be sent to standard output, generally the DOS Command Prompt that the Build was initiated from. This option can be very useful for performing Builds in a "Batch" mode. That is, many such commands could be included in one .bat file which could be automatically run at some convenient time. The messages can also be captured into a file as in the second example below. In this case all messages reported by Build for Windows will get appended to the file messages.txt instead of being displayed on the monitor.

**Syntax:**

To Build a Softcopy book specified in a Build Configuration File without starting the User Interface, at the DOS Prompt type:

`buildwp -o -bs filename`

- Where -o is an optional parameter. If you used any Softcopy books with the same name as the one being built, it will be replaced with the new Softcopy book, otherwise an error message will be displayed and the Softcopy book will not be built.
- Where filename is the fully qualified name of a Build Configuration File including the extension in quotation marks.

**Examples:**

- `buildwp -bs "C:\Program Files\IBM\IBM Bookmanager Build\notebook\templwp.bcf"`
- `buildwp -bs "C:\Program Files\IBM\IBM Bookmanager Build\notebook\templwp.bcf" > messages.txt`
- `buildwp -o -bs "C:\Program Files\IBM\IBM Bookmanager Build\notebook\templwp.bcf"`
- `buildwp -o -bs "C:\Program Files\IBM\IBM Bookmanager Build\notebook\templwp.bcf" > messages.txt`

## 5.7.5 Build a Number of Softcopy Books Specified in a Number of Build Configuration Files - Without Starting the Build for Windows User Interface

This feature will Build several Softcopy books which are specified in an equal number of Build Configuration Files. The Build for Windows interface will not be started. Any error messages will be sent to standard output, generally the DOS Command Prompt that the Build was initiated from. This option can be very useful for performing multiple Builds, especially if the Build Configuration files are maintained in a common directory or directories. The messages can also be captured into a files as in the second example below. In this case all messages reported by Build for Windows will get appended to the file messages.txt instead of being displayed on the monitor.

### Syntax:

To Build a number of Softcopy books specified in an equal number of Build Configuration Files without starting the Build for Windows User Interface, at the DOS Prompt type:

```
buildwp -o -bls filename(s) and or directoryName(s)
```

- Where -o is an optional parameter. If you used any Softcopy books with the same name as the one being built, it will be replaced with the new Softcopy book, otherwise an error message will be displayed and the Softcopy book will not be built.
- Where filename(s) and or directoryName(s) is a space separated list of Build Configuration Files and/or directories containing Build Configuration Files, each contained in quotation marks.

### Examples:

- `buildwp -bls "C:\Program Files\IBM\IBM Bookmanager Build\notebook\"`
- `buildwp -bls "C:\Configuration Files\myfile.bcf" "C:\Program Files\IBM\IBM Bookmanager Build\notebook\templwp.bcf"`
- `buildwp -bls "C:\Configuration Files\myfile.bcf" "C:\Program Files\IBM\IBM Bookmanager Build\notebook\"`
- `buildwp -o -bls "C:\Program Files\IBM\IBM Bookmanager Build\notebook\"`
- `buildwp -o -bls "C:\Configuration Files\myfile.bcf" "C:\Program Files\IBM\IBM Bookmanager Build\notebook\templwp.bcf"`
- `buildwp -o -bls "C:\Configuration Files\myfile.bcf" "C:\Program Files\IBM\IBM Bookmanager Build\notebook\"`

## 5.7.6 Display a Summary of Command Line Features

This option will display a summary of the Command Line Features to standard out, typically the computer console.

### Syntax:

To display a Summary of the command line features for Build for Windows, at the DOS Prompt type:

```
buildwp -h
```

### Example:



```
Command Prompt
C:\Program Files\IBM\IBM BookManager Build\BIN>java -jar build.jar -h
Usage:
  buildwp [-options]
  or buildwp <configuration file>
  or buildwp
Where [ options] include:
  -h                Displays usage information.
  -b <configuration file> Build the given file.
  -bc <configuration file> Build the given file,
                        suppressing the interface.
  -bl <configuration files...> Build the given list of files.
  -bls <configuration files...> Build the given list of files,
                        suppressing the interface.
  -o                Overwrite existing book files(<.boo>).
Where <configuration file> is:
  Valid Build Configuration File(*.bcf).
Where <configuration files...> is:
  Space separated list of valid Build
  Configuration Files(*.bcf) and/or
  directories containing valid
  Build Configuration Files(*.bcf).
Examples:
  buildwp
  buildwp "C:\My Files\MyConfigFile.bcf"
  buildwp -h "C:\My Files\MyConfigFile.bcf"
  buildwp -bl "C:\My Files\MyConfigFile.bcf" "C:\My Config File Directory"
  buildwp -bls "C:\My Files\MyConfigFile.bcf" "C:\My Config File Directory"
  buildwp -o -h "C:\My Files\MyConfigFile.bcf"
  buildwp -o -bl "C:\My Files\MyConfigFile.bcf" "C:\My Config File Directory"
  buildwp -o -bls "C:\My Files\MyConfigFile.bcf" "C:\My Config File Directory"
C:\Program Files\IBM\IBM BookManager Build\BIN>
```

Figure 5-12. Summary of the Command Line Features



---

## Chapter 6. Build for Windows V2.3 Program Service

This chapter contains a description of available service for Build for Windows V2.3. It contains information on how long Build for Windows V2.3 will be in service, and how to report defects.

Product information is also available on the IBM BookManager Web site:

<http://www.ibm.com/software/office/bkmgr>

This Web site contains information on product fixes, product hints and tips, and free tools.

---

### 6.1 Type and Duration of Program Service

Program Service for Build for Windows V2.3 will be available until November 15, 2003. See 6.2 "Statement of Service" for details.

---

### 6.2 Statement of Service

You may report defects to IBM Program Service for Build for Windows V2.3 until the Service Expiration Date, November 15, 2003.

A defect is defined as a code-related or documentation-related problem where the Program does not conform to the Program Specifications and the problem can be recreated in the Specified Operating Environment. Defect correction is as described in the Statement of Limited Warranty section.

To formally report a defect, please call:

1. In the United States 1-800-237-5511
2. In Canada 1-800-992-4777

If you need to call for support, have the following information available:

- The product name, service level and version number which is available from "About BookManager Build" in the Help pull-down menu as described in 5.1.1 "Menu Bar" on page 18.
- The kind of hardware and software being used at the time the problem occurred
- What happened and what you were doing when the problem occurred
- Whether you tried to solve the problem, and how
- The exact wording of any messages displayed, including any message number.



---

## A. Guide for Building Softcopy Books with BookManager Build for Windows 2.3

This guide shows you step by step how to build a softcopy book with the BookManager Build for Windows 2.3 program.

### What Build for Windows 2.3 can do for you

Build for Windows 2.3 lets you take a formatted document, created on a PC-based word processing program, and convert it into an electronic "softcopy" book. Once converted to a softcopy book, you can use the IBM Softcopy Readers to view it online. You will be able to do such things as browse the book, do searches, print pages or the whole book, copy sections, and add book marks. You will be able to view, store and distribute the softcopy books on your personal computer, a network, the Web, and on host system terminals.

### Create your own customized softcopy book

During the Build process, the Build program analyzes the document you created with your word processor. It looks at the mark-up (tagging) you specified when you developed the document. It looks at how you marked up headings, paragraphs, tables, column size and other document design elements. The Build program also looks at what you want to have included in the document, such as a tile page, list of figures or tables, copyright information and other factors.

### Tell the Build program how you want your softcopy book to look

During the Build process there are two places where you can specify how you want your softcopy book to look.

1. **Build Window - Book Details:** When you start the Build program you have the option, in the expanded Book Details section, to tell the program which parts of the book to include. You will also be able to create a title page where you can fill in information about the book.
2. **Style Mapping Files:** The Build program needs a Style Mapping file to tell it how to handle the marked up documents created with a word processor. The Build for Windows 2.3 program contains sample style mapping files created specifically for each of the word processing programs supported, see Table A-1 on page 40. The Style Mapping file defines how you want the Build program to map the document elements in your word-processor created source document into a softcopy book. This mapping ensures that the softcopy book produced can be viewed with the IBM BookManager Softcopy Readers.

### Overview of the build process:

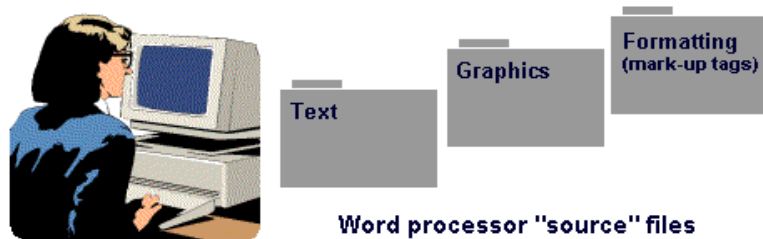
First, you will build your softcopy book using a sample Style Mapping file which has the style mapping attributes for the type of word processor you used to create your document. Second, you will analyze the resulting softcopy book built from your document files and see if it meets with your satisfaction. If not, you can customize the Style Mapping file and re-build the softcopy book again and again until you are satisfied.

1. Create a document with one of the word processing programs supported by Build for Windows 2.3, see Table A-1 on page 40.
2. Start the Build program.
3. Tell the Build program where the source files for your document are located.
4. Tell the Build program where to store the softcopy book after it has been built.

5. Select the sample Build Style Mapping file for your word processor.
6. Specify features that you want to include in the softcopy book.
7. Start the Build program to do an initial build to see how your document looks after being built into a softcopy book with the sample style mapping file.
8. Analyze the results of your softcopy book to determine if you need to make changes to the sample style mapping file to create a specific look for your book.
9. Create a customized Style Mapping file for your book.
10. If you made changes to the Style Mapping file, start the Build program to build another softcopy book.
11. Save the build data you specified in steps 3-9 in a Build Configuration File.

## A.1 Create a Document with Your Word processor

The first step is creating the document, with all of the text, graphics and formatting (mark-up tags) with your favorite word processing program. In addition to the text, the Build program can handle a wide variety of Web-ready graphics that have been successfully imported into your word processor document, such as GIF, PNG, JPG, TIF, BMP and CGM files. In many cases people start by creating a document with their word processor that can be printed, then convert this into a softcopy book for online viewing.



### Source document types you can use to build softcopy books

With BookManager Build for Windows 2.3, you can build softcopy books from source documents prepared using any of the products in Table 1.

Table A-1. Word Processors supported by BookManager Build for Windows 2.3

Word Processor	Versions	Comments
Adobe FrameMaker	4.0, 5.0, and 6.0	.MIF file version of the document only
Corel WordPerfect for DOS	5.0, 5.1, and 6.0	
Corel WordPerfect for Windows	Up to and including 9.0	
Lotus Ami Pro for Windows	3.0 and 3.1	
Lotus WordPro	9.6 and earlier	
Microsoft Word for DOS	5.0, 5.5, and 6.0	
Microsoft Word for Windows	6.0 (Word95) 7.0 (Word97, and Word2000)	

---

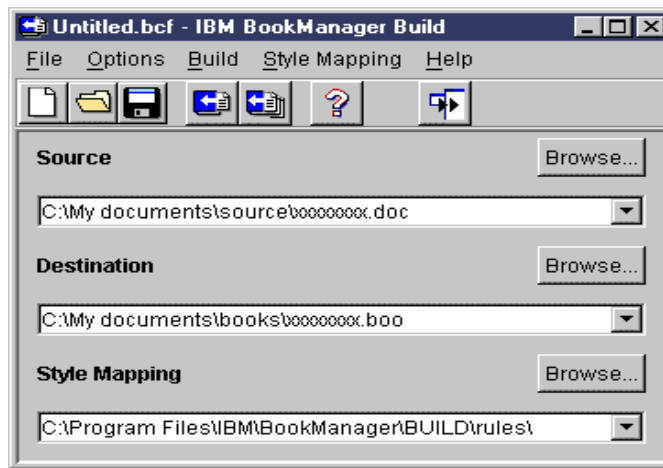
## A.2 Start the Build Program Window

Start the Build for Windows 2.3 Build program.

On the Windows Task Bar of your computer, click on **Start->Programs->IBM BookManager Build->Build 2.3**, then select the **Build 2.3** icon.



The Build main window will be displayed.



*More information:*

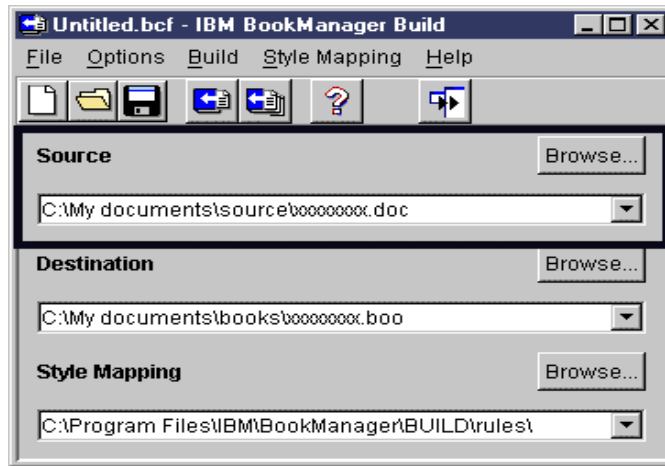
- Chapter 1, "Introduction to Build for Windows V2.3" on page 1 provides a more detailed description of the data fields in the windows.
- Chapter 3, "Starting Build for Windows" on page 11 describes different ways of starting Build for Windows.
- Chapter 5, "Using Build for Windows" on page 17 describes different ways to build softcopy books, and describes the icons on the menu bar and pull-downs on the build windows.

---

## A.3 Specify Where the Source Files for Your Document are Located

Source – The source field on the Build window indicates name and location of the word-processing document that you wish to build into a softcopy book.

To build a softcopy book, you must specify where your word processor text and graphics files are located on your computer. Enter the drive letter and file location in the **Source** field. The following example shows the source files located at C:\My documents\source\xxxxxxxx.doc.

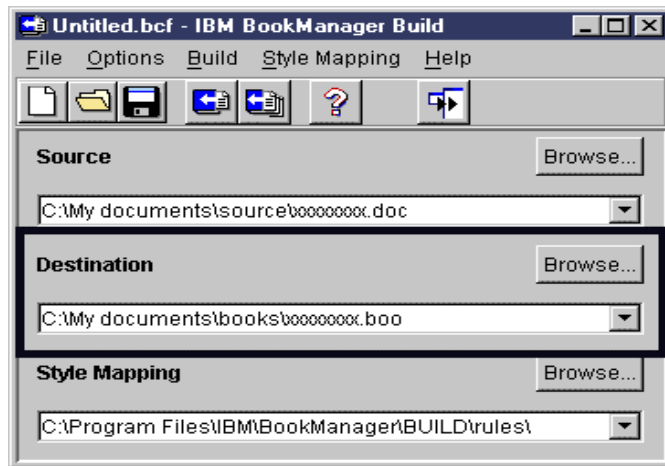


---

## A.4 Specify where to Store the Softcopy Book after it is Built

Destination – The destination field on the Build window indicates the name and location of where you want to store the softcopy book after it is built.

You must specify where you want the Build program to store the softcopy after it is built. Enter the drive letter and file location in the **Destination** field. The following example shows the destination file located at C:\Mydocuments\books\xxxxxxxx.boa.



---

## A.5 Select the Sample "Style Mapping File" for the type of Word Processor You Used to Create the Document

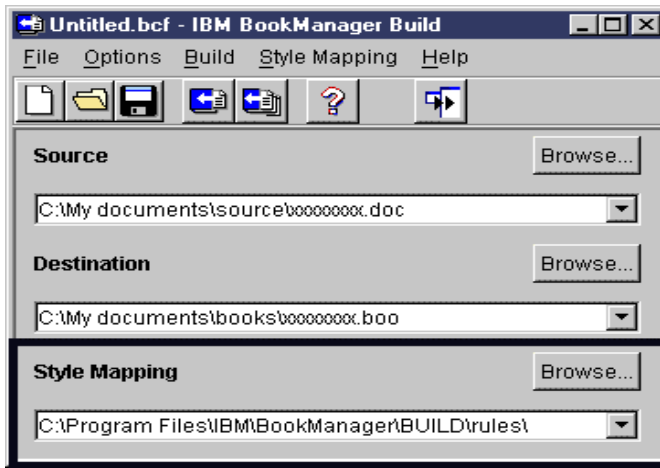
You must give the Build program some guidance (rules) on how to build a softcopy book from the document you created on your word processor. You will do this with a Style Mapping File, which tells the Build program how to handle the various style elements used in your document. For example, in your document, did you call your "heading level 1" elements a Header, or a Chapter? Is "heading level 2" defined as a Topic or a Section? These are some of the choices you can make for your document. You will make these choices and selections in the Style Mapping File, which is then used by the Build program to convert your document into a softcopy book.

Included in the Build program are sample Style Mapping files for each type of word processor supported, see Table A-2 on page 43. You may be able to use the sample file, designed for your word processor, (as it is) to build a softcopy book that is



satisfactory to you. If there are things that you would like to change, you can customize the Style Mapping file to get the results you want.

The **Style Mapping** field on the Build window indicates which Style Mapping file you wish to use when building your softcopy Book.

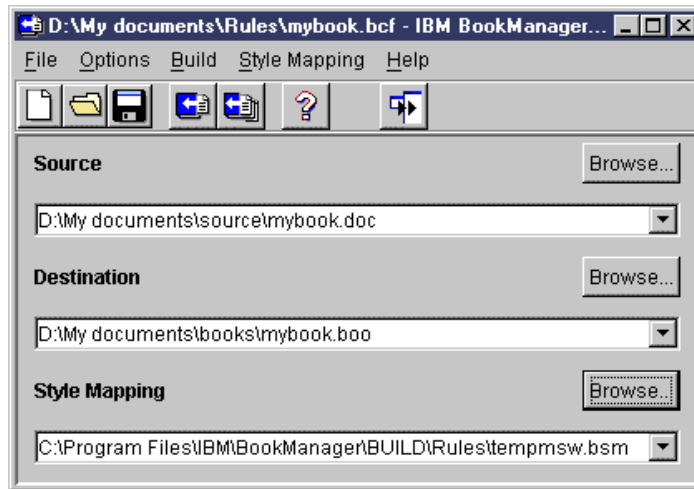


Click on **Browse** to find the folder that contains the sample Style Mapping files. If you used the default installation settings when you installed the Build program, the sample files will be in **C:\Program Files\IBM\BookManager\BUILD\rules\**. In Table A-2, find your word processor then select the corresponding Style Mapping file.

Table A-2. Sample Build Style Mapping files included with Build for Windows 3.2

Word processor	Sample Build Style Mapping file
Adobe FrameMaker	TEMPMKR.BSM
Corel WordPerfect 6 and earlier	TEMPWP6.BSM
Corel WordPerfect 7 and later	TEMPWPT.BSM
Lotus Ami Pro	TEMPAMI.BSM
Lotus WordPro	TEMPLWP.BSM
Microsoft Word 95	TEMPMS6.BSM
Microsoft Word 97 and later	TEMPMSW.BSM

In the following example, the Microsoft Word 97 word processor was used to create a document, so the **tempmsw.bsm** Style Mapping file was selected and appears in the Style Mapping field.

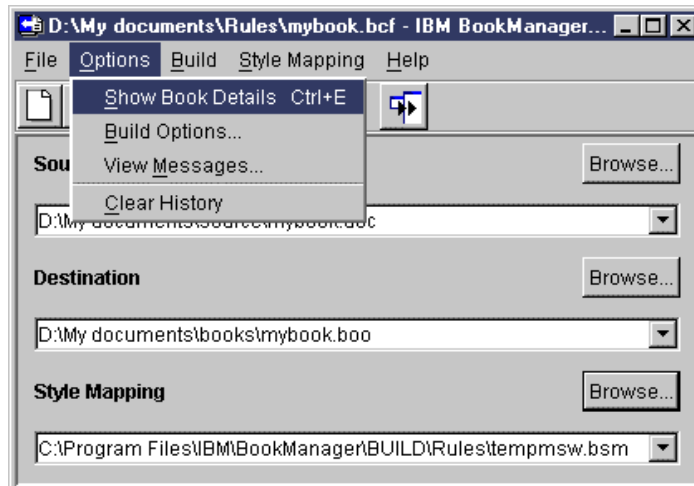


---

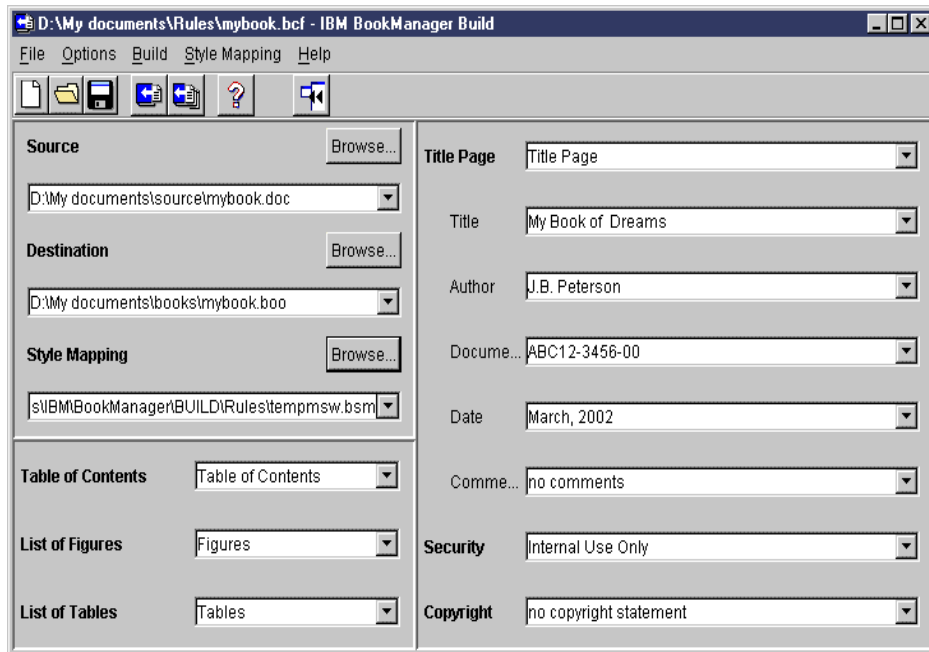
## A.6 Specify Features that You want to Include in the Softcopy Book

You can specify if you want the build program to include certain elements in the softcopy book such as table of contents, list of figures or tables, title page and more.

Click on **Options**, then click on **Show Book Details**.



The following Main Window - with details shown will be displayed.



On this expanded Build window you will define which book elements you want to have the Build program put into your softcopy book when it gets built. You can tell the Build program:

- If you want a Table of Contents or <none>
- If you want a List of Figures or <none>
- If you want a List of Tables or <none>
- If you want a Title Page (with the title, author's name, and other information), or <none>
- What information you want on the title page. Fill in the fields listed under Title Page or select <none>.

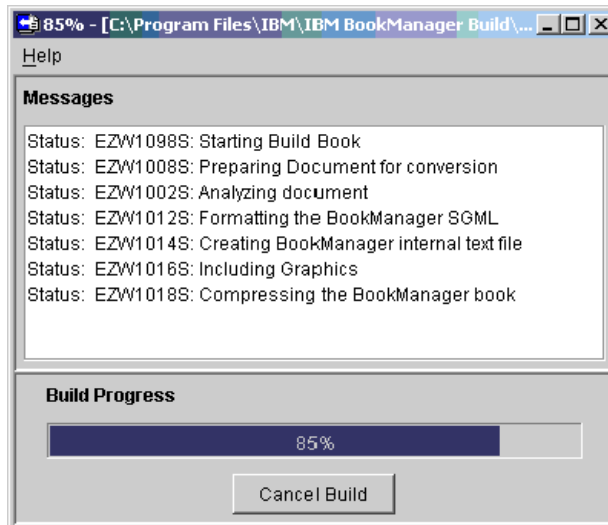
## A.7 Start the Build Process to Do an Initial Softcopy Build

At this point you are ready to do an initial build using the sample Style Mapping file to see how the softcopy book looks. If after seeing the results of the build you want to make change, you can customize the Style Mapping sample file.

Select **Build** on the main window tool bar, then from the drop-down menu, click on **Build** to start the build process.



As the book is being built you will see the progress in the Build Progress window shown below.




---

## A.8 Analyze the Results of the Softcopy Build

Analyze your softcopy book to determine if the results are satisfactory. Determine if you need to make changes to the sample style mapping file to create a specific look for your softcopy book.

Does the softcopy book look satisfactory:

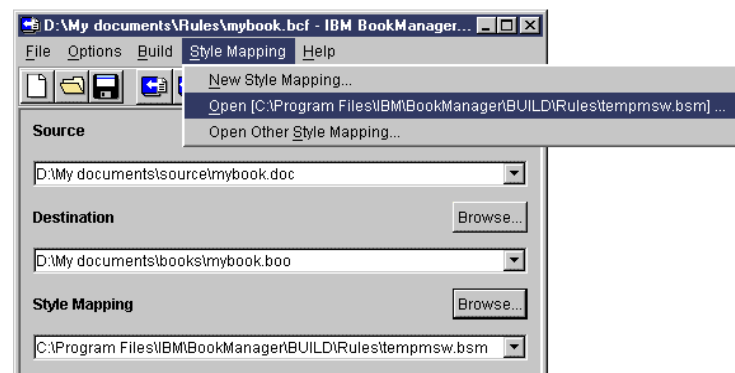
- **YES** - You are finished with the Build, go to Step A.11 “Save the Data you Specified in the Build Window and Style Mapping File” on page 48.
- **NO** - You need to customize the sample Style Mapping file for your needs, go to Step A.9 “Create a Customized Style Mapping File”.

---

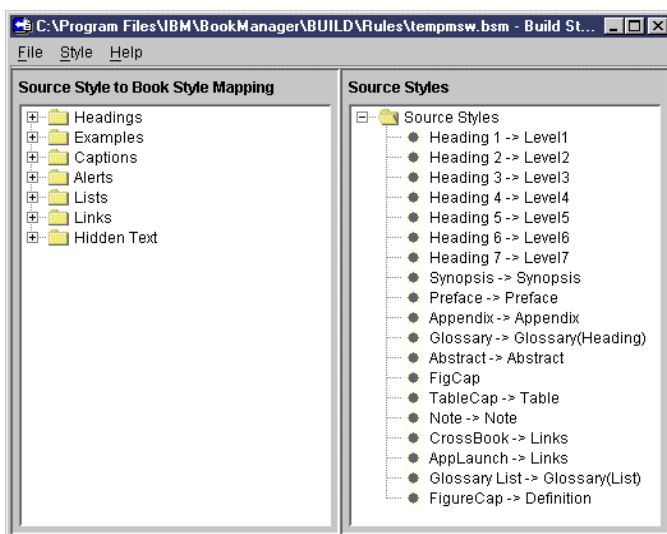
## A.9 Create a Customized Style Mapping File

If, after building and analyzing your softcopy book, you determined you are not getting the results you want with the sample Style Mapping file as it is, you can customize it to meet your needs. You will use the Style Mapping File (for your specific word processor) supplied with the Build program as a base for creating your own custom Style Mapping file.

1. Make sure the Style Mapping File specific for your word processor is displayed in the **Style Mapping** field on the Build window.
2. Click on **Style Mapping**, then click on **Open**, as shown in the following window.



After clicking on **Open**, you will see the following **Style Mapping** window which shows you the areas of the book that you can customize.



To use the **Style Mapping** window to create a custom Style Mapping file for your book, see Section 5.6 “Style Mapping Window” on page 27.

*More information:*

- *Chapter 5, “Using Build for Windows” on page 17 describes all of the features of the Style Mapping window and how to make modifications to the book elements listed in the window.*

---

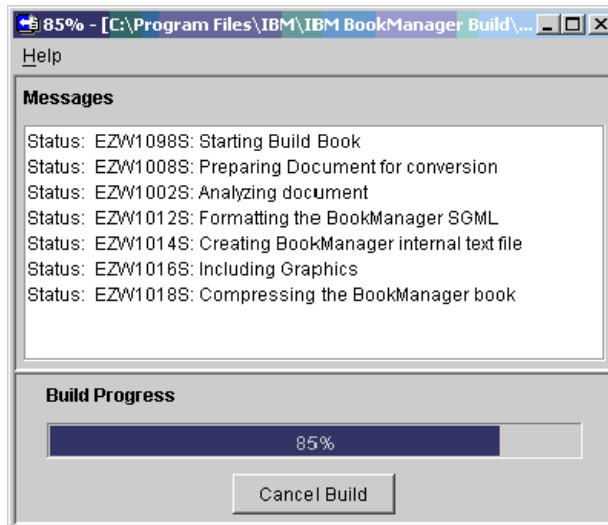
## A.10 Build Another Softcopy Book with the Changes You Made to the Style Mapping File

If you made changes to the Style Mapping file (Step 7), you need to build and analyze the softcopy book again (possibly several times) until the softcopy book meets your requirements.

Select **Build** on the main window tool bar, then from the drop-down menu, click on **Build** to start the build process.



As the book is being built you will see the progress in the Build Progress window shown below.



---

## A.11 Save the Data you Specified in the Build Window and Style Mapping File

You can save all of the settings you made, data you entered into the fields of the Build window, and the name of the Style Mapping file used to build the book. This will allow you to build similar softcopy books in the future.

To save the information in a file:

1. Click on **File > Save As**. A Save Configuration window will open.
2. Select the drive letter (C:, D:, etc.) and folder where you wish to store the file.
3. Assign a name and enter it into the **File Name:** field.
4. Click on **Save**. The file will be stored as a .bcf (Build Configuration file).

You can use this Build Configuration file to build similar softcopy books in the future. You can create as many .bcf files as you need. You can access these files using the **File** pull-down menu.

## **B. Sample Files Shipped with BookManager Build for Windows 2.3**

The following files are shipped with BookManager Build for Windows 2.3.

<b>Word processor</b>	<b>Source files</b>	<b>Build Configuration (BCF file)</b>	<b>Build Style Mapping (BSM file)</b>
<b>Adobe FrameMaker</b>	TEMPMKR.MIF	TEMPMKR.BCF	TEMPMKR.BSM
<b>Corel WordPerfect 6 and earlier</b>	TEMPWP6.DOC	TEMPWP6.BCF	TEMPWP6.BSM
<b>Corel WordPerfect 7 and later</b>	TEMPWPT.DOC	TEMPWPT.BCF	TEMPWPT.BSM
<b>Lotus Ami Pro</b>	TEMPAMI.SAM BOOKAMI.STY	TEMPAMI.BCF	TEMPAMI.BSM
<b>Lotus WordPro</b>	TEMPLWP.LWP	TEMPLWP.BCF	TEMPLWP.BSM
<b>Microsoft Word 95</b>	TEMPMS6.DOC	TEMPMS6.BCF	TEMPMS6.BSM
<b>Microsoft Word 97 and later</b>	TEMPMSW.DOC	TEMPMSW.BCF	TEMPMSW.BSM





# Glossary

This glossary defines all new terms and abbreviations used in this document. Definitions that were derived from the following sources are identified by the symbols indicated:

- The *American National Standard Dictionary for Information Systems*, ANSI X3.172-1990, copyright 1990 by the American National Standards Institute (ANSI). Copies can be purchased from the American National Standards Institute, 1430 Broadway, New York, New York 10018. Definitions are identified by the symbol (A) after the definition.
- The *Information Technology Vocabulary*, developed by Subcommittee 1, Joint Technical Committee 1, of the International Organization for Standardization and the International Electrotechnical Commission (ISO/IEC JTC1/SC1). Definitions of published parts of this vocabulary are identified by the symbol (I) after the definition; definitions taken from draft international standards, committee drafts, and working papers being developed by ISO/IEC JTC1/SC1 are identified by the symbol (T) after the definition, indicating that final agreement has not yet been reached among the participating National Bodies of SC1.

## References

The following cross-references are used in this glossary:

- *Contrast with* - refers to a term that has an opposite or different meaning.
- *See* - refers to multiple-word terms that have the same last word.
- *See also* - refers to related terms that have a similar, but not synonymous, meaning.
- *Synonym for* - indicates that the term has the same meaning as another term, which is defined.

## A

**artwork.** A visual representation of a vector graphic or a raster image on a display screen.

**American National Standard Code for Information Interchange (ASCII).** The standard code, using a coded character set consisting of 7-bit coded characters (8 bits including parity check), that is used for information interchange among data processing systems, data communication systems, and associated equipment. The ASCII set consists of control characters and graphic characters. (A)

**author.** The person who wrote or prepared the information in a softcopy document.

## B

**book.** A publication or other written material. *See also* softcopy book.

**BookManager Build.** A group of IBM licensed programs that lets you create softcopy books. BookManager Build is available for Windows, MVS, and VM.

**BookManager Read.** A group of IBM licensed programs that let you read softcopy books. BookManager Readers are available for MVS, VM, AIX, AS/400, Linux, and Windows.

**Build.** The process of creating a softcopy book from a source document.

**build configuration file.** A Build for Windows file containing information that identifies the source document you are building, the Style Mapping file that Build for Windows should use, the name of the softcopy book to build, and any additional document elements you want Build for Windows to include in the softcopy book.

## C

**chapter.** In BookManager, a section or part of a softcopy book whose topic ID begins with a major topic number, such as 1.0 or 4.0.

**code page.** An assignment of graphic characters and control function meanings to all code points; for example, assignment of characters and meanings to 256 code points for an 8-bit code.

**collection.** A set of electronic books that reside at a single file system location, such as D:BOOKS.

**collection kit.** A set of electronic books provided by IBM on a CD-ROM.

## D

**DLL.** Dynamic link library. A module containing executable code that is linked at run time.

**document.** Synonym for *source document*.

**document element(s).** The pieces of your source document, such as headings, paragraphs, notes, figures, captions, and cross-references.

**dynamic link library.** A module containing executable code that is linked at load or run time.

## G

**graphic.** Pertaining to pictorial material or the output of graphics software, in contrast to text. Graphics in a softcopy book can be integrated into the text or displayed in a separate window.

## H

**hypertext.** A method of accessing information in a nonlinear fashion by linking to more information on a particular graphic or idea.

**hypertext link.** An automatic connection between a document element in one part of a softcopy book to another document element in the same book or to another softcopy book.

## I

**icons.** Graphical representations of various document elements such as disk drives, applications, and documents.

**index.** An alphabetical list of the subjects in a softcopy document and the topics in which each subject is found. Contrast with table of contents and search index.

**inline image.** A graphic image that appears on the same line as text in a document.

## L

**LAN.** Local area network. A computer network located on user premises within a limited geographical area.

**local area network (LAN).** (1) Two or more computing units connected for local resource sharing. (2) A network in which communications are limited to a moderate-sized geographic area, such as a single office building, warehouse, or campus, and that do not extend across public rights-of-way.

## P

**page.** A unit of content, usually textual, that is accessed in a single transaction over the World Wide Web. (May be the equivalent of one or many pages of printed material.)

**path.** The storage location of a file. The path includes the drive, directory, and, if applicable, the line of subdirectories leading to the directory in which the file resides.

## R

**revisions.** Changes an author has made to a book. Revisions may be marked with revision characters. Readers can move through a book looking at only those topics that have been changed or added to the book.

## S

**softcopy book.** A file created by BookManager Build from a source document. A softcopy book can be viewed by any of the BookManager Readers and BookServers.

**Softcopy Reader.** IBM Softcopy Reader is a Java-based online documentation reader and organizer made up of two programs: (1) *Book Reader* allows you to open softcopy books created with one of the IBM BookManager Build programs, (2) *Bookshelf Organizer* allows you to manage your books and bookshelves.

**source document.** An input file that can contain text, formatting codes, and artwork. A document can be edited, printed, viewed, or used as input to a publishing program product such as BookManager Build.

**style mapping file.** A Build for Windows file containing the style recognition rules that determine how Build for Windows recognizes document elements in a source document and then builds them in a softcopy book.

## T

**table.** Information presented in rows and columns and defined by the author as a table.

**table of contents.** A list of topics in the order in which they appear in a book.

**topic.** A heading and its subsequent text up to the next heading; the basic unit of information in a BookManager softcopy Book.

**topic heading.** A heading that introduces a new topic in softcopy. Each topic heading is made up of two parts: a topic ID and a topic title.

**topic title.** The title that is associated with a topic heading. See also topic heading.

**topics list.** A list of all the topics in a softcopy document that have topic IDs.

## U

**URL.** Universal resource locator. The standard World Wide Web means for specifying the location of a resource on the Internet.

## V

**vector graphic.** Computer graphics in which display images are generated from display commands and coordinate data. (I) (A)

## W

**Web browser.** A browser for reading World Wide Web documents. See browser.

**World Wide Web.** A worldwide network of linked documents on the Internet that point to other documents on related topics. Using Netscape Navigator or other Web

browser software, a user can navigate quickly and easily around the global Internet, following the pointers to topics of interest.



---

## Bibliography

Listed below is the BookManager family of products and related information.

### BookManager BookServer

*IBM BookManager BookServer for World Wide Web for AIX and Linux: Getting Started* SC34-3152 (available in softcopy only)

*IBM BookManager BookServer for World Wide Web for MVS: Getting Started* SC34-3105 (available in softcopy only)

*IBM BookManager BookServer for World Wide Web for Windows: Getting Started* SC34-3104 (available in softcopy only)

### BookManager READ

*IBM BookManager READ for OS/2: Getting Started* SC34-3097 (available in softcopy only)

*IBM BookManager READ for Windows: User's Guide*, SC34-3056

*IBM BookManager READ for Windows: Online Reference*, SC34-3057 (available only in softcopy with the BookManager READ for Windows product)

*IBM BookManager READ for Windows: Quick Reference*, SC34-3058

### BookManager Build for Windows

*IBM BookManager Build for Windows: Getting Started V2.3*, SC34-3098 (available in softcopy only)

*IBM BookManager Build for Windows: Messages and Codes V2.3*, SC31-8902 (available in softcopy only)

### BookManager BUILD SGML

*IBM BookManager BUILD SGML: Getting Started*, SC34-3073

*IBM BookManager BUILD SGML: BIF DTD Reference*, SC34-3075 (available in softcopy only)

*IBM BookManager BUILD SGML: Reference*, SC34-3074 (available in softcopy only)

### BookManager BUILD/2

*IBM BookManager BUILD/2: Getting Started*, SC34-3049

*IBM BookManager BUILD/2: Building Softcopy Books*, SC34-3076 (available in softcopy only)

### BookManager READ/DOS

*IBM BookManager READ/DOS: General Information*, GB35-0816

*IBM BookManager READ/DOS: Displaying Online Books*, SB35-0817 (available only in softcopy with the BookManager READ/DOS product)

*IBM BookManager READ/DOS: Installation, Getting Started, and Customization*, SX76-0148

### AIX BookManager READ/6000

*IBM AIX BookManager READ/6000: Displaying Online Books*, SC22-0096

*IBM AIX BookManager READ/6000: Getting Started and Quick Reference*, SX28-6800

*IBM AIX BookManager READ/6000: Installation Planning and Customization*, SX28-6801

### BookManager MVS

*IBM BookManager READ/MVS and BUILD/MVS: General Information*, GC38-2032

*IBM BookManager READ/MVS: Getting Started and Command Summary*, SC38-2033

*IBM BookManager READ/MVS: Displaying Online Books*, SC38-2034

*IBM BookManager READ/MVS: Installation Planning and Customization*, SC38-2035

*IBM BookManager BUILD/MVS: Preparing Online Books*, SC38-2036

*IBM BookManager BUILD/MVS: Installation Planning and Customization*, SC38-2037

### BookManager VM

*IBM BookManager READ/VM and BookManager BUILD/VM: General Information*, GC23-0447

*IBM BookManager READ/VM: Getting Started and Command Summary*, SC23-0448

*IBM BookManager READ/VM: Displaying Online Books*, SC23-0449

*IBM BookManager READ/VM: Installation and Customization*, SC23-0455

*IBM BookManager BUILD/VM: Preparing Online Books*, SC23-0450

*IBM BookManager BUILD/VM: Installation and Customization, SC23-0451*

**Other Publications**

*Writing Softcopy for BookManager, SC22-0011*

*IBM BookMaster 4.0 User's Guide, SC34-5009*

*Printing and Publishing Collection, SK2T-2921 (CD-ROM only)*

# Index

## Numerics

8.3 file naming 21

## A

About BookManager Build, help menu 19

AIX

BookServer Reader x

read softcopy books 3

alerts 14

Ami Pro, source files 2

artwork, in softcopy books 2

AS/400 platform 3

Author, data field 20

## B

back matter, in softcopy books 3

bcf file 17

Book Reader x

Book Style - with several source styles, example 31

Book Style Tree 28

Book Style, example 30

BookManager BookServer for the World Wide Web,

view softcopy books

AIX 3

Windows 3

z/OS 3

BookManager BUILD x

BookManager READ, viewing softcopy books 1

BookManager READ/MVS, view softcopy books 3

BookManager READ/VM, view softcopy books 3

BookManager READers x

BookManager service 37

BookManager Web site 37

BookServer Readers x

Bookshelf Organizer x

bsm extension, Style Mapping file xi

Build

Configuration file xi

Configuration Notebook 13

style mapping files xi, 13

Build Configuration files

working with Build for Windows files 13

BUILD for Windows

starting 12

Build for Windows 1

Build for Windows files 13

installing 5, 6

introduction to 1

launching from a command line 8

main window 17, 18

migration from V2.2 to V2.3 5

requirements 5

starting 11, 12

support 37

using 17

Build for Windows files

Build Configuration 13

Build List Buttons 25

Build List Messages window 26, 27

Build List window 24

Build List, build menu 19

Build Menu 19

Build 19

Build List 19

Build Options window 21

Build Options, options menu 18

Build Style Mapping files 13

Build working directory, Build Options window 21

Build, build menu 19

Build for Windows

service 37

## C

captions, Style Mapping files 14

Clear History, options menu 19

Code Page

Build Options window 21

command line, starting Build for Windows 11

Comments, data field 20

Configuration file xi

Continue with Missing References, Build Options

window 21

conversion utility 7

converting V2.2 files to V2.3 7

Copyright, data field 20

## D

Data Fields 20

Date, data field 20

Destination, data field 20

Dictionary, Build Options window 21

Document Number, data field 20

DOS command line, launching build 8

## E

edit a current style 29

element mapping 14

Error message 23

examples, style mapping file 14

## F

file conversion utility 7

File List 25

- file menu 18
  - Exit 18
  - new 18
  - Open 18
  - Save 18
  - Save As 18
- file naming, 8.3 21
- files
  - build style mapping xi, 13
- FrameMaker, source files 2
- front matter, in softcopy books 2

## G

- Getting Started, help menu 19

## H

- hardware and software resources required 5
- headings, style mapping file 14
- help
  - icon 19
  - style mapping files 15
- Help Menu 19, 23
  - About BookManager Build 19
  - Getting Started 19
  - Help 19
- hidden text 15
- Hide Book Details, icon 19
- Hide Book Details, options menu 18
- hypertext links, in softcopy books 2

## I

- IBM BookManager Readers 1
- IBM BookServer x
- IBM Softcopy Reader 1
  - for Linux, view softcopy books 3
  - for Windows, view softcopy books 3
- Include Graphics, Build Options window 21
- InfoSeeker 3
- installing Build for Windows 5, 6

## L

- launching from a command line 8
- links, see hypertext links 2
- links, style mapping file 14
- Linux
  - BookServer Reader x
  - IBM Softcopy Reader x, 3
- List of Figures, data field 20
- List of Tables, data field 20
- lists, style mapping file 14

## M

- main window, Build for Windows 17, 18
- mapping
  - element 14
- Mapping Styles 29
- mapping, style mapping files xi, 13
- Menu Bar 24
- menu bar 18
- messages
  - Error 23
  - Status 23
  - Warning 23
- Messages Window 22
- Microsoft Windows NT ix
- Microsoft Windows platform, familiarization with ix
- Microsoft Word for DOS, source files 2
- Microsoft Word for Windows 2
- migration, from Version 2.2 to Version 2.3 5
- MVS
  - Build x
  - Read x

## N

- New Style Mapping, style mapping menu 19
- New, icon 19

## O

- Open Build Configuration File, icon 19
- Open build List Window, icon 19
- Open Other Style Mapping, style mapping menu 19
- Open, Style Mapping menu 19
- Options Menu 18
  - Build Options 18
  - Clear History 19
  - Hide Book Details 18
  - Show Book Details 18
  - View Messages 18
- Overwrite Existing Files check box 25

## P

- pictures, in softcopy 2
- program service 37

## R

- READ/MVS 3
- READ/VM 3
- remove a style 29
- requirements, Build for Windows 5



## S

- Save, icon 19
- Security, data field 20
- service, Build for Windows 37
- Show Book Details, icon 19
- Show Book Details, options menu 18
- softcopy book parts
  - artwork 2
  - back matter 3
  - front matter 2
  - hypertext links 2
  - pictures 2
  - topics 2
- softcopy reader 3
- SoftCopy Reader System Directory, Build Options window 21
- software requirements 5
- Source document xi, 2
- source documents, template files 3
- source files
  - Ami Pro 2
  - FrameMaker 2
  - Microsoft Word for DOS 2
  - WordPerfect 2
  - WordPerfect for Windows 2
  - WordPro 2
- Source Style Tree 29
- Source Style Tree, example 30
- Source, data field 20
- Start Build Process, icon 19
- Start SoftCopy Reader, Build Options window 21
- starting BUILD for Windows 12
- starting Build for Windows 11, 12
- Status message 23
- style
  - edit 29
  - remove 29
- Style Mapping files 13
  - build xi
  - captions 14
  - element mapping 14
  - examples 14
  - file xi
  - headings 14
  - help 15
  - links 14
  - lists 14
  - mapping 13
  - sections of 14
  - template files 3
- Style Mapping Menu 19
  - New Style mapping 19
  - Open 19
  - Open Other Style Mapping 19
- Style Mapping, data field 20
- styles
  - mapping 29
- Sun Java 2 Runtime Environment 5
- support, BookManager products 37

## T

- Table of Contents, data field 20
- template files 3
  - source documents 3
- template files, to create source documents 3
- Title Page, data field 20
- Title, data field 20
- toolbar 19
- topics, in softcopy books 2
- tree
  - book style 28
  - source style 29

## U

- Use 8.3 Naming, Build Options window 21
- User's Guide, help menu 19
- using Build for Windows 17
- utility
  - file conversion 7
- utility, file conversion 7

## V

- View Messages, options menu 18
- view softcopy books 3
  - BookManager BookServer for the World Wide Web
    - for AIX 3
    - for Windows 3
    - for z/OS 3
  - BookManager READ/MVS 3
  - BookManager READ/VM 3
  - IBM Softcopy Reader
    - for Linux 3
    - for Windows 3
- VM 3
  - Build x
  - Read x

## W

- Warning message 23
- Web site, BookManager 37
- Windows
  - BookServer Reader x
  - Build x
  - Build List 24
  - Build List Messages 26, 27
  - Build Options 21
  - IBM Softcopy Reader x
    - main 17
    - read softcopy books 3
  - Windows start menu, starting Build for Windows 11
  - Windows95, 98, NT, 2000 or ME ix
  - word-processing program 1
  - WordPerfect for Windows, source files 2

WordPro, source files 2

## **Z**

z/OS 3

BookServer Reader x  
read softcopy books 3

---

# Readers' Comments—We'd Like to Hear from You

IBM BookManager Build for Windows: Getting Started Version 2 Release 3

Publication No. SC34-3098-04



IBM Corporation  
Department 55JA, Mail Station P384  
522 South Road  
Poughkeepsie, New York 12601-5400







Program Number: 5639-A74  
5639-A74

SC34-3098-04

