

z/OS DFSMS V1R5



# Basic Tape Library Support (BTLS) User's Guide and Reference



z/OS DFSMS V1R5



# Basic Tape Library Support (BTLS) User's Guide and Reference

**Note**

Before using this information and the product it supports, be sure to read the general information under "Notices" on page 71.

**Ninth Edition, March 2004**

This edition applies to Version 1 Release 1 of Basic Tape Library Support (5655-056) for z/OS® DFSMS Version 1 Release 5 (5694-A01), Version 1 Release 5 of z/OS.e (5655-G52), and to all subsequent releases and modifications until otherwise indicated in new editions.

This edition replaces SC26-7016-07.

IBM® welcomes your comments. A form for readers' comments may be provided at the back of this document, or you may address your comments to the following address.

International Business Machines Corporation  
Department 55JA, Mail Station P384  
2455 South Road  
Poughkeepsie, NY 12601-5400  
United States of America

FAX (United States & Canada): 1+845+432-9405

FAX (Other Countries): Your International Access Code +1+845+432-9405

IBMLink™ (United States customers only): IBMUSM10(MHVRCFS)

Internet e-mail: mhvrdfs@us.ibm.com

World Wide Web: <http://www.ibm.com/servers/eserver/zseries/zos/webqs.html>

If you would like a reply, be sure to include your name, address, telephone number, or FAX number.

Make sure to include the following in your comment or note:

- Title and order number of this document
- Page number or topic related to your comment

When you send information to IBM, you grant IBM a nonexclusive right to use or distribute the information in any way it believes appropriate without incurring any obligation to you.

© Copyright International Business Machines Corporation 1993, 2004. All rights reserved.

US Government Users Restricted Rights – Use, duplication or disclosure restricted by GSA ADP Schedule Contract with IBM Corp.

---

# Contents

<b>Figures</b> . . . . .	vii
<b>Tables</b> . . . . .	ix
<b>About this document</b> . . . . .	xi
Required product knowledge . . . . .	xi
Where to find more information . . . . .	xi
Referenced documents . . . . .	xi
Accessing softcopy documents on CD-ROM and DVD collections and the Internet . . . . .	xii
Accessing z/OS licensed documents on the Internet . . . . .	xiii
Using LookAt to look up message explanations . . . . .	xiii
Using notational conventions. . . . .	xiv
<b>Summary of changes</b> . . . . .	xv
<b>Chapter 1. Introduction</b> . . . . .	1
Message display . . . . .	1
Allocation . . . . .	1
Dynamic device reconfiguration (DDR) . . . . .	2
LIBRARY command . . . . .	2
IBM 3494 and 3495 attention messages . . . . .	2
SMF record type 94 - IBM tape library statistics . . . . .	2
<b>Chapter 2. Using the LIBRARY command</b> . . . . .	3
JCL requirements . . . . .	3
TSO/E requirements . . . . .	4
LIBRARY command description . . . . .	4
AUDIT . . . . .	5
COUNTS . . . . .	6
DEFINE . . . . .	6
DELETE . . . . .	7
DEMOUNT . . . . .	8
DEVICES . . . . .	8
INVENTORY . . . . .	9
JOBNAMES . . . . .	10
LISTVOL . . . . .	11
MOUNT . . . . .	11
OPTIONS . . . . .	12
REPORT . . . . .	15
RESETACL . . . . .	16
RESETDEVICE . . . . .	17
SETACL . . . . .	17
SETCATEGORY . . . . .	18
SETCEXIT . . . . .	18
SETDEVICE . . . . .	19
THRESHOLD . . . . .	20
Category names . . . . .	21
Library names . . . . .	22
<b>Chapter 3. Installation tasks</b> . . . . .	23
Authorize the TSO/E LIBRARY command . . . . .	23
Define the LIBRARY command to RACF . . . . .	23

Disable catalog name checking . . . . .	23
Define the BTLS usercatalog . . . . .	24
Define library devices to the system . . . . .	24
VM/ESA guest . . . . .	25
Define library devices to BTLS . . . . .	26
Create SYS1.PARMLIB member BTLPRM00 . . . . .	26
Install the BTLS allocation interface . . . . .	28
Insert volumes into the IBM 3494 and 3495 . . . . .	29
Assign volumes to SCRATCH or PRIVATE category . . . . .	29
Create BTLS volume catalog records. . . . .	29
Initialize volumes using IEHINITT . . . . .	30
Define the BTLS options . . . . .	30
Control SCRATCH allocation . . . . .	30
<b>Chapter 4. Messages and codes . . . . .</b>	<b>33</b>
Allocation messages . . . . .	33
LIBRARY command messages . . . . .	34
IBM 3494 and 3495 error messages . . . . .	38
Dynamic device reconfiguration (DDR) messages . . . . .	39
Tape allocation SSI initialization. . . . .	40
Tape allocation SSI . . . . .	40
BTLS abnormal end codes . . . . .	42
<b>Chapter 5. Error recovery procedures . . . . .</b>	<b>43</b>
<b>Appendix A. Allocation diagnostic support . . . . .</b>	<b>51</b>
<b>Appendix B. Message Display diagnostic support . . . . .</b>	<b>53</b>
<b>Appendix C. Installation exits . . . . .</b>	<b>55</b>
Set category installation exit . . . . .	55
Allocation installation exit . . . . .	56
Message display installation exit . . . . .	57
<b>Appendix D. MOUNT and DEMOUNT examples . . . . .</b>	<b>59</b>
Successful SCRATCH mount. . . . .	59
Mount error recovery. . . . .	59
Mount failure. . . . .	60
<b>Appendix E. Migration to DFSMS . . . . .</b>	<b>61</b>
BTLS on the Internet. . . . .	61
MIGRATE command . . . . .	61
Examples . . . . .	63
Migration report. . . . .	64
Usage notes . . . . .	65
Migration steps . . . . .	65
SETCATEGORY changes . . . . .	67
<b>Appendix F. Accessibility . . . . .</b>	<b>69</b>
Using assistive technologies . . . . .	69
Keyboard navigation of the user interface . . . . .	69
z/OS Information . . . . .	69
<b>Notices . . . . .</b>	<b>71</b>
Programming interface information. . . . .	72
Trademarks . . . . .	72

I

I  
I  
I

**Index . . . . . 73**





# **Figures**

1. Migration to DFSMS . . . . .	66
---------------------------------	----



---

## Tables

1. Additional reference information . . . . .	xi
2. Volume demount - category assignment . . . . .	1
3. LIBRARY command functions . . . . .	4
4. AUDIT parameter . . . . .	5
5. COUNTS parameter . . . . .	6
6. DEFINE parameter . . . . .	6
7. DELETE parameter . . . . .	7
8. DEMOUNT parameter . . . . .	8
9. DEVICES parameter . . . . .	8
10. INVENTORY parameter . . . . .	9
11. JOBNAMES parameter . . . . .	10
12. LISTVOL parameter . . . . .	11
13. MOUNT parameter . . . . .	11
14. OPTIONS parameter . . . . .	12
15. Specifying BTLS OPTION characters . . . . .	14
16. REPORT parameter . . . . .	15
17. RESETACL parameter . . . . .	16
18. RESETDEVICE parameter . . . . .	17
19. SETACL parameter . . . . .	17
20. SETCATEGORY parameter . . . . .	18
21. SETCEXIT parameter . . . . .	18
22. SETDEVICE parameter . . . . .	19
23. THRESHOLD parameter . . . . .	20
24. Category names used by the LIBRARY command . . . . .	21
25. BTLS catalog records . . . . .	24
26. Error recovery procedures . . . . .	44
27. Required APARs . . . . .	66



---

## About this document

This book is for system programmers, system operators, and other data processing personnel who manage, maintain, or use the Tape Library Dataserver.

**Attention:** Starting with z/OS or z/OS.e DFSMS Version 1 Release 5, BTLS will be provided as FMID HDZ11ZS. This version of BTLS is release independent, and can be installed on all future versions of DFSMS that announce support for BTLS. The *Basic Tape Library Support User's Guide and Reference Version 1 Release 1*, SC26-7016-08, can be used with any future installation of HDZ11ZS.

**Note:** This is a revision of Basic Tape Library Support (BTLS) (5655-056 (Version 1 Release 1)) for z/OS DFSMS (5694-A01 (Version 1 Release 5)) or z/OS.e DFSMS (5655-G52 (Version 1 Release 5)).

This book describes the Basic Tape Library Support (BTLS) product used with the Tape Library Dataserver.

---

## Required product knowledge

To use this product effectively, you should be familiar with:

- Assembler language
- Job control language
- Standard program linkage conventions
- Tape Library Dataserver.

The notational conventions used by BTLS follow the Access Method Services (AMS) conventions. See any of the AMS documents listed in “Referenced documents.” Each of these documents contain a “Notational Conventions” section.

---

## Where to find more information

Where necessary, this document references information in other documents, using the shortened version of the document title. For complete titles and order numbers of the documents for all products that are part of z/OS, see *z/OS Information Roadmap*.

## Referenced documents

Table 1 contains additional reference information.

*Table 1. Additional reference information*

<b>Title</b>	<b>Order Number</b>
<i>IBM TotalStorage Enterprise Automated Tape Library (3494) Introduction and Planning Guide</i>	GA32-0448
<i>IBM TotalStorage Enterprise Automated Tape Library Operator Guide</i>	GC23-0449
<i>Magstar 3495 Introduction and Planning Guide</i>	GA32-0234
<i>Magstar 3495 Operator Guide</i>	GA32-0235
<i>z/OS DFSMS Access Method Services for Catalogs</i>	SC26-7394
<i>z/OS DFSMS Installation Exits</i>	SC26-7396
<i>z/OS MVS Using the Subsystem Interface</i>	SA22-7642
<i>z/OS MVS System Messages, Vol 1 (ABA-AOM)</i>	SA22-7631

Table 1. Additional reference information (continued)

Title	Order Number
<i>z/OS MVS System Messages, Vol 2 (ARC-ASA)</i>	SA22-7631
<i>z/OS MVS System Messages, Vol 3 (ASB-BPX)</i>	SA22-7633
<i>z/OS MVS System Messages, Vol 4 (CBD-DMO)</i>	SA22-7634
<i>z/OS MVS System Messages, Vol 5 (EDG-GFS)</i>	SA22-7635
<i>z/OS MVS System Messages, Vol 6 (GOS-IEA)</i>	SA22-7636
<i>z/OS MVS System Messages, Vol 7 (IEB-IEE)</i>	SA22-7637
<i>z/OS MVS System Messages, Vol 8 (IEF-IGD)</i>	SA22-7638
<i>z/OS MVS System Messages, Vol 9 (IGF-IWM)</i>	SA22-7639
<i>z/OS MVS System Messages, Vol 10 (IXC-IZP)</i>	SA22-7640
<i>z/OS MVS System Codes</i>	SA22-7626
<i>z/OS MVS Data Areas, Vol 1 (ABEP-DALT)</i>	SA22-7626
<i>z/OS MVS Data Areas, Vol 2 (DCCB-ITZYRETC)</i>	GA22-7582
<i>z/OS MVS Data Areas, Vol 3 (IVT-RCWK)</i>	GA22-7583
<i>z/OS MVS Data Areas, Vol 4 (RD-SRRA)</i>	GA22-7584
<i>z/OS MVS Data Areas, Vol 5 (SSAG-XTLST)</i>	GA22-7584
<i>z/OS JES2 Data Areas, Vol 1 \$ALINDEX-\$EVT</i>	GA22-7528
<i>z/OS JES2 Data Areas, Vol 2 \$FCLWORK-\$OUTWORK</i>	GA22-7529
<i>z/OS JES2 Data Areas, Vol 3 \$PADDR-\$XRQ</i>	GA22-7530
<i>z/OS JES3 Data Areas, Volume 1 (IATYARL-IATYIDD)</i>	GA22-7543
<i>z/OS JES3 Data Areas, Volume 2 (IATYIFC-IATYMPD)</i>	GA22-7544
<i>z/OS JES3 Data Areas, Volume 3 (IATYMWTO-IATYSRD)</i>	GA22-7545
<i>z/OS JES3 Data Areas, Volume 4 (IATYSRF-IATY8FB)</i>	GA22-7546

## Accessing softcopy documents on CD-ROM and DVD collections and the Internet

This book also will be available on the following collections the next time they are updated.

*IBM eServer zSeries Online Library; z/OS Software Products Collection*

*IBM eServer zSeries Online Library; z/OS V1Rx and Software Products DVD Collection*

This book is also available in BookManager and PDF format on the z/OS Internet library at:

<http://www.ibm.com/servers/eserver/zseries/zos/bkserv/>

Using a BookManager READ program, you can view and find information quickly in BookManager documents in a variety of environments. You can view the books directly from a CD-ROM or DVD, or copy the books to a shared workstation or local area network (LAN) server. You can also transfer the books to your host system or view them on the Internet. For instance, the z/OS product includes both BookManager READ for host viewing and BookManager BookServer, which allows you to access and read books over an Internet or intranet connection using an HTML browser. From CD-ROM or DVD you can use any supported IBM BookManager reader, such as the IBM Softcopy Reader.

For more information, see:

<http://www.ibm.com/servers/eserver/zseries/softcopy/>

You can view and print PDF files using an Adobe Acrobat Reader available free on the Internet at:

<http://www.adobe.com/prodindex/acrobat/>

## Accessing z/OS licensed documents on the Internet

z/OS licensed documentation is available on the Internet in PDF format at the IBM Resource Link™ Web site at:

<http://www.ibm.com/servers/resourceLink>

Licensed documents are available only to customers with a z/OS license. Access to these documents requires an IBM Resource Link user ID and password, and a key code. With your z/OS order you received a Memo to Licensees (GI10-0671) that includes this key code.<sup>1</sup>

To obtain your IBM Resource Link user ID and password, log on to:

<http://www.ibm.com/servers/resourceLink>

To register for access to the z/OS licensed documents:

1. Sign in to Resource Link using your Resource Link user ID and password.
2. Select **User Profiles** located on the left-hand navigation bar.

**Note:** You cannot access the z/OS licensed documents unless you have registered for access to them and received an e-mail confirmation informing you that your request has been processed.

Printed licensed documents are not available from IBM.

You can use the PDF format on either **z/OS Licensed Product Library CD-ROM** or IBM Resource Link to print licensed documents.

## Using LookAt to look up message explanations

LookAt is an online facility that lets you look up explanations for most of the IBM® messages you encounter, as well as for some system abends and codes. Using LookAt to find information is faster than a conventional search because in most cases LookAt goes directly to the message explanation.

You can use LookAt from the following locations to find IBM message explanations for z/OS elements and features, z/VM®, and VSE:

- The Internet. You can access IBM message explanations directly from the LookAt Web site at <http://www.ibm.com/eserver/zseries/zos/bkserv/lookat/>.
- Your z/OS TSO/E host system. You can install code on your z/OS or z/OS.e systems to access IBM message explanations, using LookAt from a TSO/E command line (for example, TSO/E prompt, ISPF, or z/OS UNIX System Services running OMVS).
- Your Windows® workstation. You can install code to access IBM message explanations on the *z/OS Collection* (SK3T-4269), using LookAt from a Windows DOS command line.

---

1. z/OS.e customers received a Memo to Licensees (GI10-0684) that includes this key code.

- Your wireless handheld device. You can use the LookAt Mobile Edition with a handheld device that has wireless access and an Internet browser (for example, Internet Explorer for Pocket PCs, Blazer, or Eudora for Palm OS, or Opera for Linux handheld devices). Link to the LookAt Mobile Edition from the LookAt Web site.

You can obtain code to install LookAt on your host system or Windows workstation from a disk on your *z/OS Collection* (SK3T-4269), or from the LookAt Web site (click **Download**, and select the platform, release, collection, and location that suit your needs). More information is available in the LOOKAT.ME files available during the download process.

## Using notational conventions

The notational conventions used by BTLs follow the Access Method Services (AMS) conventions. See any of the AMS documents listed in “Referenced documents” on page xi. Each of these documents contains a “Notational Conventions” section.



---

## Summary of changes

This document contains terminology, maintenance, and editorial changes. Technical changes or additions to the text and illustrations are indicated by a vertical line to the left of the change.

You may notice changes in the style and structure of some content. For example, text that has a different look and format. The changes are ongoing improvements to the consistency and retrievability of information in our documents.

---

## Summary of changes for SC26-7016-08, for z/OS or z/OS.e Version 1 Release 5 DFSMS

This document contains information that was previously presented in *Basic Tape Library Support User's Guide and Reference Version 1 Release 1*, SC26-7016-07. The following sections summarize the changes to that information.

**Attention:** Starting with z/OS or z/OS.e DFSMS Version 1 Release 5, BTLS will be provided as FMID HDZ11ZS. This version of BTLS is release independent, and can be installed on all future versions of DFSMS that announce support for BTLS. The *Basic Tape Library Support User's Guide and Reference Version 1 Release 1*, SC26-7016-08, can be used with any future installation of HDZ11ZS.

### New information

This edition includes new information.

- Added diagnostic support; see Appendix B, “Message Display diagnostic support,” on page 53.
- Added user accessibility features; see Appendix F, “Accessibility,” on page 69.
- z/OS.e DFSMS Version 1 Release 5

### Changed information

This edition includes changed information.

- Support; see “Create SYS1.PARMLIB member BTLPRM00” on page 26.
- Migration; see “BTLS on the Internet” on page 61.
- Documentation, see “Referenced documents” on page xi.
- Internet, see “Accessing softcopy documents on CD-ROM and DVD collections and the Internet” on page xii.
- Licensed documents, see “Accessing z/OS licensed documents on the Internet” on page xiii.

### Moved information

This edition contains moved information.

- Reader's comment information to the Edition notices information.
- Document conventions; see “Using notational conventions” on page xiv.

### Deleted information

This edition did not delete information.

---

## Summary of changes for SC26-7016-07, Eighth Edition, March 2002

**Note:** This is a revision of Basic Tape Library Support (BTLS) (5655-056 (Version 1 Release 1)) for z/OS DFSMS (5694-A01 (Version 1 Release 3)).

This book contains information that was previously presented in *Basic Tape Library Support User's Guide and Reference Version 1 Release 1*, SC26-7016-06.

## New information

This edition includes the following new information:

- Revision information; see Chapter 1, "Introduction," on page 1.
- Device address ranges; see Table 9 on page 8.
- Installing tasks; see "Disable catalog name checking" on page 23.
- IEA301I message; see "Migration steps" on page 65.
- Required APAR; see Table 27 on page 66.
- Internet books; see "Accessing softcopy documents on CD-ROM and DVD collections and the Internet" on page xii.
- Licensed books on the internet; see "Accessing z/OS licensed documents on the Internet" on page xiii.

## Changed information

This edition includes the following changed information:

- Related publications; see "Referenced documents" on page xi.
- Making reader's comments.

## Moved information

This edition includes moved information; see "Notices" on page 71.

## Deleted information

This edition deleted references to the SecureWay Security Server for OS/390.

This book contains terminology, maintenance, and editorial changes. Technical changes or additions to the text and illustrations are indicated by a vertical line to the left of the change.

Starting with this edition, you may notice changes in the style and structure of some content in this book. For example, headings that use uppercase for the first letter of initial words only, and text that has a different look and format. The changes are ongoing improvements to the consistency and retrievability of information in our books.

---

## Summary of changes for SC26-7016-06, Seventh Edition, September 2000

This book applies to Version 1 Release 1 of Basic Tape Library Support and contains information that was previously presented in *Basic Tape Library Support User's Guide and Reference*, SC26-7016-05.

Some of the BTLS functions described in this edition require the JDZ11DS offering or later. For offerings prior to JDZ11DS, the following PTFs are required: OW28989, OW26582, OW18860, OW27393, OW21730, and OW26135.

## New information

This edition includes the new information about finding up-to-date BTLS information on the internet; see "BTLS on the Internet" on page 61.

## Changed information

This edition includes the following changed information:

- An updated list of related publications is included; see “Referenced documents” on page xi.
- The notices, programming interface information, and trademarks are after the appendixes; see “Notices” on page 71.

## Moved information

This edition does not include moved information.

## Deleted information

This edition does not include deleted information.

---

## Summary of changes for SC26-7016-05, Sixth Edition, March 1999

This book applies to Version 1 Release 1 of Basic Tape Library Support and contains information that was previously presented in *Basic Tape Library Support User's Guide and Reference*, SC26-7016-04.

Support for the BTLS functions described in this edition require either the JDZ11ES or JDZ11DS Program Offerings. For previous offerings, the following PTFs are required: OW28989, OW26582, OW18860, OW27393, OW21730, and OW26135.

## New information

This edition includes the following new information:

- Migrating from BTLS to DFSMS/MVS; see Appendix E, “Migration to DFSMS,” on page 61.
- Using the RACF, a component of the SecureWay Security Server for OS/390, protect-all option with BTLS; see “Define the BTLS usercatalog” on page 24.
- Finding up-to-date information about BTLS on the Web; see “BTLS on the Internet” on page 61

## Changed information

This edition does not include changed information.

## Moved information

This edition does not include moved information.

## Deleted information

This edition does not include deleted information.

---

## Summary of changes for SC26-7016-04, Fifth Edition, September 1997

This book applies to Version 1 Release 1 of Basic Tape Library Support and contains information that was previously presented in *Basic Tape Library Support User's Guide and Reference*, SC26-7016-03.

Support for the new BTLS functions described in this edition requires either the JDZ11DS Program Offering or for previous offerings: OW28989, OW26582, OW18860, OW27393, OW21730, and OW26135.

## New information

This edition includes the following new information:

- **Allow BTLS and SMS tape to co-exist** - BTLS APAR OW03323 is used to enable SMS tape support for 3494/3495 tape library. The installation of OW03323 disables BTLS. APAR OW18860 allows some of the BTLS functions to be used after OW03323 is installed. The BTLS LIBRARY command can be used to create 'pseudo' libraries by associating a group of volumes with a group of non-library drives.

With OW03323 and OW18860 installed, the following BTLS LIBRARY commands can be used:

```
DEFINE    (define a volume in a BTLS library)
DELETE    (delete a volume from a BTLS library)
DEVICES   (define the devices in a BTLS library)
JOBNAMES  (define JOBNAMES that use a BTLS library).
LISTVOL   (list the volumes defined in a BTLS library)
OPTIONS   (define the BTLS operating options)
```

The APAR listed above (OW03323) is used to enable SMS tape library support on DFSMS/MVS Version 1 Release 1.

APAR OW17868 is used to enable SMS tape library support on DFSMS/MVS Version 1 Release 2 and DFSMS/MVS Version 1 Release 3. PTFs for OW18860 are available for BTLS releases JDZ111S, JDZ11BS and JDZ11CS.

For BTLS release JDZ11DS, APAR OW28259 is used to enable SMS tape library support on DFSMS/MVS Version 1 Release 4. The functions provided by OW18860 are included in BTLS release JDZ11DS.

- **Specify multiple volumes using the VOLUME parameter** - The BTLS LIBRARY command is changed to allow the VOLUME parameter to specify either a single volume or a range of volumes. The following are examples of the VOLUME parameter:

```
LIBRARY DEFINE VOLUME(ABC000)
LIBRARY DELETE VOLUME(ABC000-ABC025)
LIBRARY AUDIT  VOLUME(ABC000-ABC009)
```

- **BTLS Allocation Option "E"** - Allocation option "E" causes BTLS to direct allocations into or away from a BTLS library based on esoteric unit names. The following esoteric names are supported:

```
BTLSLIB1
BTLSLIB2
BTLSLIB3
BTLSLIB4
BTLSLIB5
BTLSLIB6
BTLSLIB7
BTLSLIB8
```

- **IBM 3590 Support** - OW20751 and OW21348 add support for the IBM 3590 Tape Drive.
- **Other changes** - Service changes have been added throughout the book.

## Changed information

This edition does not include changed information.

## Moved information

This edition does not include moved information.

## Deleted information

This edition does not include deleted information.

---

## Summary of changes for SC26-7016-03, Fourth Edition, June 1995

This book applies to Version 1 Release 1 of Basic Tape Library Support and contains information that was previously presented in *Basic Tape Library Support User's Guide and Reference*, SC26-7016-02.

Support for the new BTLS functions described in this edition, require either the JDZ11BS Program Offering or OW12877 (for previous offerings).

## New information

This edition includes the following new information:

- **BTLS LIBRARY Command Options** - Additional LIBRARY command OPTIONS statements allow you to specify LIBAFFINITY, AUTODEMOUNT, and EXPDT98000. See "OPTIONS" on page 12 for more information.
- **Library Statistics** - The BTLS SMF type 94 record is now used to record library statistics. See "SMF record type 94 - IBM tape library statistics" on page 2 for more information.
- **Messages** - New messages have been added to support the MVS/SP 5.2 tape allocation SSI.  
The description of many existing messages has been improved.
- **Error Recovery Table** - The error recovery procedures table, Table 26 on page 44, provides specific information about each of the messages reported to the operator by BTLS.
- **New Category Names** - The new category names, PURGE and EJECTM, have been added. PURGE allows you to purge a volume, and EJECTM allows you to list any manually ejected volumes. See "Category names" on page 21 for more information.

## Changed information

This edition includes changed information; Installation Tasks - Chapter 3 is rewritten to better describe the installation of BTLS and also to provide tutorial information.

## Moved information

This edition includes the information from Appendix D, "Parmlib Member BTLPRM00" that is moved into Chapter 3, "Installation tasks," on page 23.

## Deleted information

This edition includes deleted information from Appendix D.; "Parmlib Member BTLPRM00" that is moved into Chapter 3, "Installation tasks," on page 23.

---

## Summary of changes for SC26-7016-02, Third Edition, July 1994

This book applies to Version 1 Release 1 of Basic Tape Library Support and contains information that was previously presented in *Basic Tape Library Support User's Guide and Reference*, SC26-7016-01.

## New information

This edition includes the following new information:

- **LIBRARY Command** - AUDIT: The new function, AUDIT, uses the robotic vision system to verify that a volume is physically present in a library.  
REPORT: The new function, REPORT, lists information about the devices and volumes in a library.
- **Migration to DFSMS** - Use of the new LIBRARY MIGRATE command to migrate to DFSMS managed tape is described in Appendix E, “Migration to DFSMS,” on page 61.
- **Controlling BTLS Library Functions** - New parameters used to control BTLS library functions used to be described in the former Appendix D, “Parmlib Member BTLPRM00”, and are now included in Chapter 3, “Installation tasks,” on page 23.
- **Messages and Codes** - New messages and codes are shown in Chapter 4, “Messages and codes,” on page 33.

## Changed information

This edition includes the following changed information:

- The LIBRARY command changes; the THRESHOLD function has been updated to allow separate threshold values for multiple categories and multiple libraries.
- Messages and codes information; see Chapter 4, “Messages and codes,” on page 33.
- Message Display Exit; changes to the Message Display installation exit module IGXMSGEX are described in Appendix C, “Installation exits,” on page 55.

## Moved information

This edition does not include moved information.

## Deleted information

This edition does not include deleted information.

---

## Summary of changes for SC26-7016-01, First Edition, June 1993

This book applies to Version 1 Release 1 of Basic Tape Library Support.

## New information

The Basic Tape Library Support (BTLS) for the Tape Library Dataserver modifies or adds the following functions:

- Message display.
- Allocation.
- Dynamic device reconfiguration (DDR).
- Basic Tape Library Support LIBRARY command.
- IBM 3494 and 3495 attention messages.

This edition includes the following new information:

- **Message display** - Message display is the function that sends messages to the 3490 Message Display Pod. For Basic Tape Library Support, message display is modified to also send MOUNT and DEMOUNT commands to the Tape Library Dataserver. These new commands instruct the Tape Library Dataserver to mount a library volume on a drive, or to demount a volume and return it to the library storage rack.

The MOUNT command sent to the Tape Library Dataserver requests that either a specific (PRIVATE) volume be mounted or that ANY volume from the scratch category be mounted. When a volume is demounted, the DEMOUNT command instructs the Tape Library Dataserver to assign the volume to the specific (PRIVATE) category.

- **Allocation** - The Basic Tape Library Support uses catalog records to describe each library configuration. Catalog records are also used to define allocation rules. Each volume in a library is also defined by a catalog entry that names the library in which the volume resides.

Basic Tape Library Support uses catalog records to ensure that the appropriate device is allocated to mount a volume. The set of devices that would normally be eligible for an allocation is modified by Basic Tape Library Support to include only **library** devices or only **manual** devices.

For specific volume requests (private volumes), if the volume is cataloged as a library volume, then only devices in the Tape Library Dataserver are used to satisfy the allocation. If the volume is not cataloged as a library volume, then only manual devices are used to satisfy the allocation.

For non-specific requests (scratch volumes), scratch allocation rules are used to determine whether a manual device or a library device is used to satisfy the allocation. Allocation rules are established using the LIBRARY command.

- **Dynamic device reconfiguration (DDR)** - Dynamic device reconfiguration (DDR) is the function used to swap a volume to another device following a permanent I/O error. Basic Tape Library Support changes to DDR ensure that when a DDR swap is from a library device, that only devices in the same library are used to swap. Likewise, when a DDR swap is from a manual device, only manual devices are used to swap.
- **Basic Tape Library Support LIBRARY command** - Basic Tape Library Support adds the new access method services LIBRARY command. The LIBRARY command is used to perform functions such as:
  - Change volume status from private to scratch
  - Define library devices
  - Define allocation rules for library devices
  - Obtain lists of library volumes from the Tape Library Dataserver
  - Create or delete catalog records for library volumes
  - Perform IBM 3494 and 3495 functions such as mount, demount, ejection of cartridges, and integrated cartridge loader (ICL) setup
  - Can be RACF protected.

The access method services LIBRARY command is used to perform operations needed to manage tape volumes in a Tape Library Dataserver.

- **Tape Library Dataserver attention messages** - The Tape Library Dataserver reports MOUNT and DEMOUNT completion status and library errors to the host with attention messages. To return messages to the host, the Tape Library Dataserver presents attention and the host responds by reading a message from the Tape Library Dataserver. To report messages to the system operator, the Basic Tape Library Support provides the Tape Library Dataserver the ability to read attention messages and report error status.

## Changed information

This edition does not include changed information.

## **Moved information**

This edition does not include moved information.

## **Deleted information**

This edition does not include deleted information.



---

# Chapter 1. Introduction

**Note:** This document is a revision of Basic Tape Library Support (BTLS) (5655-056 (Version 1 Release 1)) for z/OS DFSMS (5694-A01 (Version 1 Release 5)).

This document describes the Basic Tape Library Support (BTLS) for the Tape Library Dataserver. The BTLS support modifies or adds the following functions:

Section	Page
Message display	1
Allocation	1
Dynamic device reconfiguration (DDR)	2
LIBRARY command	2
SMF record type 94 - IBM tape library statistics	2

---

## Message display

Message display is the function that sends messages to the 3490 or 3590 message display. For BTLS, message display is modified to also send mount and demount commands to the IBM 3494 and 3495. These new commands instruct the IBM 3494 and 3495 to mount a library volume on a drive, or to demount a volume and return it to the library storage rack.

Mount commands sent to the IBM 3494 and 3495 request that either a specific (PRIVATE) volume be mounted or that any volume from a scratch category be mounted. When a volume is demounted, BTLS may change the category assignment of the volume as follows:

*Table 2. Volume demount - category assignment*

PRIVATE	A volume is assigned to the PRIVATE category when a KEEP or RETAIN demount is issued (“Kvolser” or “Rvolser” is displayed on the drive).
UNCHANGED	A volume is left in its current category when: <ul style="list-style-type: none"><li>• A PUBLIC demount is issued. (“Dvolser” is displayed on the drive).</li><li>• No volser is specified for a demount.</li></ul>
ERROR	When the volser specified in a demount does not match the external label of the volume, the volume is assigned to the ERROR category.

---

## Allocation

BTLS support uses catalog records to describe each library configuration and to define allocation rules. Each volume in a library is also defined by a catalog record that names the library in which the volume resides.

BTLS uses catalog records to ensure that the appropriate device is allocated to mount a volume. The set of devices that would normally be eligible for an allocation is modified by BTLS to include only library devices or only non-library devices.

For specific volume requests (private volumes), if the volume is cataloged as a library volume, then only devices in the IBM 3494 and 3495 are used to satisfy the

allocation. If the volume is not cataloged as a library volume, then the volume is assumed to reside outside of a library and only non-library devices are used to satisfy the allocation.

For nonspecific requests (scratch volumes), scratch allocation rules are used to determine whether a library device or a non-library device is used to satisfy the allocation. Library definitions, volume records and allocation rules are established using the LIBRARY command.

---

## Dynamic device reconfiguration (DDR)

Dynamic device reconfiguration (DDR) is the function used to swap a volume to another device following a permanent I/O error. BTLS changes to DDR ensure that DDR will swap to a device of the same type as the original device. For example, if the original device is in a library, DDR will swap it to a library device in the same library.

---

## LIBRARY command

Basic Tape Library Support adds the new access method services LIBRARY command. The LIBRARY command is used to perform functions such as:

- Change volume status from PRIVATE to SCRATCH.
- Define library devices.
- Define allocation rules for library devices.
- Obtain lists of library volumes from the Tape Library Dataserver.
- Create or delete catalog records for library volumes.
- Perform IBM 3494 and 3495 functions such as mount, demount, ejection of cartridges, and integrated cartridge loader (ICL) setup.

---

## IBM 3494 and 3495 attention messages

The Tape Library Dataserver reports mount and demount completion status and library errors to the host with attention messages. To return messages to the host, the IBM 3494 and 3495 presents device attention status and the host is expected to respond with an I/O command to read a message from the IBM 3494 and 3495.

BTLS includes software support to read IBM 3494 and 3495 attention messages and report error status to the system operator. Most of the attention messages received by the host are used to report the normal completion of a mount or demount; these messages are read by BTLIS but are not reported to the system operator.

---

## SMF record type 94 - IBM tape library statistics

A 3494 or 3495 Tape Library accumulates statistics over the period of one hour. These statistics represent the activity of the tape library that results from all hosts attached to the library.

At the end of each hour, the library calculates composite statistics about the activity of all devices in the library and sends a statistical data message to all attached hosts. BTLIS writes an SMF type 94 record containing the library statistical data.

IECSMF94 is the mapping macro for the SMF type 94 record. IECSMF94 resides in SYS1.MACLIB.

---

## Chapter 2. Using the LIBRARY command

Basic Tape Library Support (BTLS) adds the new access method services LIBRARY command to perform operations needed to manage tape volumes in a Tape Library Dataserver such as:

- Change volume status from PRIVATE to SCRATCH.
- Define library devices.
- Define allocation rules for library devices.
- Obtain lists of library volumes from the IBM 3494 and 3495.
- Create or delete catalog records for library volumes.
- Perform IBM 3494 and 3495 functions such as mount, demount, ejection of cartridges, and integrated cartridge loader (ICL) setup.

The LIBRARY command has the same requirements and rules as existing access method services commands. For example, commands are continued from one line to the next with a '-' or '+'. Access method services modal commands (IF,THEN) may be used to control a series of LIBRARY commands. Commands and parameters must be separated from each other by one or more blanks. Comments may be added whenever a blank can appear, and are distinguished by /\* and \*/ delimiters. See any of the AMS publications listed in "Referenced documents" on page xi. Each of these publications contains a "Notational Conventions" section.

See "Library names" on page 22 for a list of the supported library names and "Category names" on page 21 for a list of the category names used by the LIBRARY command.

---

### JCL requirements

The IDCAMS LIBRARY command can be executed as either a TSO command or with JCL. When JCL is used, the following example describes the DD requirements.

```
//LIBTEST JOB .....
//STEP1 EXEC PGM=IDCAMS
//SYSPRINT DD SYSOUT=A
//LIBIN DD DISP=SHR,DSN=TMS.OUTPUT
//LIBOUT DD DISP=SHR,DSN=INVENTORY.OUTPUT
//SYSIN DD *
LIBRARY SETCATEGORY VOLSER(VOL001) CATEGORY(SCRATCH) UNIT(803)
/*
```

**LIBIN** - LIBIN is an optional DD statement that identifies a data set containing a list of volume serial numbers. The LIBRARY commands that support LIBIN are AUDIT, DEFINE, DELETE and SETCATEGORY. These commands perform *volume* operations, and the target volumes can either be a single volume specified with the VOLSER parameter or a list of volumes from LIBIN. When the VOLSER parameter is specified it is used. When the VOLSER parameter is omitted LIBIN is used. The LIBIN data set must contain 80 byte records, with each record containing a *volser* starting in column one.

**LIBOUT** - The LIBOUT DD statement identifies a data set used by the LIBRARY INVENTORY and LIBRARY LISTVOL commands to list volume serial numbers. The volume serial numbers in LIBOUT may be used as LIBIN data for other library

commands such as SETCATEGORY. LIBOUT is required by the LIBRARY INVENTORY and LIBRARY LISTVOL commands and is ignored by all other LIBRARY commands.

A LIBOUT data set must be allocated with LRECL=80.

---

## TSO/E requirements

To use the LIBRARY command under TSO/E, the command must be authorized. Chapter 3, “Installation tasks,” on page 23 describes how to authorize the LIBRARY command and how to control the use of the LIBRARY command with Resource Access Control Facility (RACF®), a component of the Security Server for z/OS. After installation, LIBRARY commands can be executed from the TSO command line as shown in the following examples:

```
LIBRARY SETCAT VOLSER(VOL001) CATEGORY(SCRTCH) UNIT(803)
LIBRARY REPORT
LIBRARY OPTIONS (JEE)
LIBRARY COUNTS UNIT(803)
```

The LIBRARY LISTVOL and LIBRARY INVENTORY commands, require an output dataset. The following is an example of the LISTVOL command being executed as a TSO command:

```
ALLOCATE FILE(LIBOUT) DUMMY LRECL(80) RECFM(F B)
LIBRARY INVENTORY CATEGORY(ERROR) UNIT(803)
```

**Note:** In the example, the INVENTORY command is being used to display a list of volumes in the error category on the TSO console. Because the LIBOUT file is not needed, it is allocated as DUMMY.

---

## LIBRARY command description

The syntax of the LIBRARY command follows. A description of each of the LIBRARY command functions follows the command syntax.

*Table 3. LIBRARY command functions*

AUDIT	<b>UNIT(<i>unit</i>) [VOLSER(<i>volser</i>)] [FORCE]</b>
COUNTS	<b>UNIT(<i>unit</i>)</b>
DEFINE	<b>[VOLSER(<i>volser</i>)] [LIBNAME(<i>libname</i>)]</b>
DELETE	<b>[VOLSER(<i>volser</i>)] [LIBNAME(<i>libname</i>)]</b>
DEMOUNT	<b>UNIT(<i>unit</i>)</b>
DEVICES	<b>(<i>devicerange devicerange ...</i>) [LIBNAME(<i>libname</i>)]</b>
INVENTORY	<b>UNIT(<i>unit</i>) CATEGORY(<i>category</i>)</b>
JOBNAMES	<b>(<i>jobname...</i>) [LIBNAME(<i>libname</i>)]</b>
LISTVOL	<b>[LIBNAME(<i>libname</i>)]</b>
MOUNT	<b>UNIT(<i>unit</i>) [VOLSER(<i>volser</i>)]</b>
OPTIONS	<b>(<i>option</i>)</b>
REPORT	<b>[LIBNAME(<i>libname</i>)]</b>
RESETACL	<b>UNIT(<i>unit</i>)</b>
RESETDEVICE	<b>UNIT(<i>unit</i>)</b>

Table 3. LIBRARY command functions (continued)

SETACL	<b>UNIT(<i>unit</i>) CATEGORY(<i>category</i>)</b>
SETCATEGORY	<b>UNIT(<i>unit</i>) CATEGORY(<i>category</i>) [VOLSER(<i>volser</i>)]</b>
SETCEXIT	<b>UNIT(<i>unit</i>)</b>
SETDEVICE	<b>UNIT(<i>unit</i>) CATEGORY(<i>category</i>)</b>
THRESHOLD	<b>(<i>count</i>) [CATEGORY(<i>category</i>)] [LIBNAME(<i>libname</i>)]</b>

## AUDIT

Table 4. AUDIT parameter

LIBRARY	AUDIT	<b>UNIT(<i>unit</i>) [VOLSER(<i>volser</i>)] [FORCE]</b>
---------	-------	----------------------------------------------------------

### AUDIT

Use the robotic vision system to verify that a volume is physically present in the library. AUDIT sends an order to the library and then waits for the audit to complete. Only ONE audit job (or TSO command) can be active at one time from a host operating system. If more than one audit is attempted, the second audit will fail with message: BTLS041I AUDIT ALREADY IN PROGRESS.

**Note:** It is recommended that the LIBRARY AUDIT command be executed from the batch environment and not as a TSO command. Audits are given a very low priority by the Library Manager, and may take a long time to complete. While the TSO LIBRARY AUDIT command is waiting for an audit to complete, the terminal will be unavailable for other commands.

### UNIT(*unit*)

Specifies the address used to send the audit command to the library. Any device in the library can be specified. In a multi-library environment, the device specified determines the library in which the audit is performed.

### VOLSER(*volser*)|VOLSER(*volser-volser*)

The volume(s) to be audited. To audit a list of volumes, the VOLSER parameter is omitted and the LIBIN data set is used to obtain volume serial numbers.

The VOLSER parameter can be specified using either the alias name VOLUME or the abbreviated name VOL. VOLSER can be used to specify either a single volume or a range of volumes. Use the following rules to specify a range of volume serial numbers:

- Specify six character VOLSERS, separated by a dash (-)
- The first 3 characters of each VOLSER must be the same
- The last 3 characters of each volume must be numeric.

### FORCE

When an audit abnormally terminates, a subsequent audit can receive message "BTLS041I MOUNT ALREADY IN PROGRESS" even though no audit is in progress. Specify the FORCE parameter to bypass the BTLS041I condition.

In the following example an audit is to be performed to verify that the 10 volumes ABC000 through ABC009 are in the library addressed by device 123.

```
//LIBJOB JOB
// EXEC PGM=IDCAMS
//SYSPRINT DD SYSOUT=A
//SYSIN DD *
LIBRARY AUDIT UNIT(123) VOLSER(ABC000-ABC009)
```

## COUNTS

Table 5. COUNTS parameter

LIBRARY	COUNTS	UNIT( <i>unit</i> )
---------	--------	---------------------

### COUNTS

Obtain a count of all of the volumes in each category in a library. The count report is written to SYSPRINT.

### UNIT(*unit*)

Specifies the address used to send orders to the library. Any device in the library can be specified. In a multi-library environment, the device specified determines the library from which the counts are to be obtained.

In the following example a volume count of all categories is to be obtained.

```
//LIBJOB JOB
// EXEC PGM=IDCAMS
//SYSPRINT DD SYSOUT=A
//SYSIN DD *
LIBRARY COUNTS UNIT(123)
```

## DEFINE

Table 6. DEFINE parameter

LIBRARY	DEFINE	[VOLSER( <i>volser</i> )] [LIBNAME( <i>libname</i> )]
---------	--------	-------------------------------------------------------

### DEFINE

Create a catalog 'volume' entry for the volume specified on the VOLSER parameter, or obtained from the LIBIN data set if the VOLSER parameter was not specified. The library name specified by the LIBNAME parameter is included in the catalog entry. For specific volume requests, the catalog entry is used by allocation to ensure that volumes residing in a library are allocated to drives in the proper library.

### VOLSER(*volser*)|VOLSER(*volser-volser*)

Identifies the volume(s) to be cataloged. To process a list of volumes, the VOLSER parameter can be omitted and the LIBIN data set is used to obtain volume serial numbers.

The VOLSER parameter can be specified using either the alias name VOLUME or the abbreviated name VOL. VOLSER can be used to specify either a single volume or a range of volumes. Use the following rules to specify a range of volume serial numbers:

- Specify six character VOLSERs, separated by a dash (-)
- The first 3 characters of each VOLSER must be the same
- The last 3 characters of each volume must be numeric.

### LIBNAME(*libname*)

Specifies the tape library name that is included in the catalog record created for a volume (see "Library names" on page 22). If LIBNAME(*libname*) is not specified, the default library name(LIB1) is used.

In this example volume SYS001 is defined in the catalog as residing in library LIB1; the LIBRARY command is being issued as a TSO command.

```
TSO LIBRARY DEFINE VOLSER(SYS001)
```

In this example all of the volumes listed in the LIBIN data set are defined in the catalog as residing in library LIB1.

```
//LIBJOB2 JOB
//          EXEC PGM=IDCAMS
//SYSPRINT DD  SYSOUT=A
//LIBIN    DD  DSN=LIB1.VOLUMES
//SYSIN    DD  *
          LIBRARY DEFINE
```

In this example all of the volumes listed in the LIBIN data set will be defined in the catalog as residing in library LIB2.

```
//LIBJOB3 JOB
//          EXEC PGM=IDCAMS
//SYSPRINT DD  SYSOUT=A
//LIBIN    DD  DATA
T11111
T22222
/*
//SYSIN    DD  *
          LIBRARY DEFINE LIBNAME(LIB2)
```

## DELETE

Table 7. DELETE parameter

LIBRARY	DELETE	[VOLSER( <i>volser</i> )] [LIBNAME( <i>libname</i> )]
---------	--------	-------------------------------------------------------

### DELETE

Delete either volume or library catalog records. A volume catalog record names the library in which the volume resides and is created by the LIBRARY DEFINE command. To delete a single volume record the VOLSER(*volser*) parameter can be used. To delete more than 1 volume record the LIBIN data set can be used to provide a list of *volser*s.

Library records are those catalog records that define the devices and jobnames associated with a library name. Library records are created by the LIBRARY DEVICES and LIBRARY JOBNAMES commands and are deleted when LIBNAME is specified with the DELETE command.

### LIBNAME(*libname*)

Identifies the library JOBNAMES and DEVICES records to be uncataloged.

### VOLSER(*volser*)|VOLSER(*volser-volser*)

Identifies the volume(s) to be uncataloged. To process a list of volumes, the VOLSER and LIBNAME parameters are omitted and the LIBIN data set is used to obtain volume serial numbers.

The VOLSER parameter can be specified using either the alias name VOLUME or the abbreviated name VOL. VOLSER can be used to specify either a single volume or a range of volumes. Use the following rules to specify a range of volume serial numbers:

- Specify six character VOLSERS, separated by a dash (-).
- The first 3 characters of each VOLSER must be the same.
- The last 3 characters of each volume must be numeric.

In this example volume SYS001 is deleted from the catalog.

```
TSO LIBRARY DELETE VOLSER(SYS001)
```

In this example all of the volumes listed in the dataset LIB1.VOLUMES.PURGED will be deleted from the catalog.

```
//LIBJOB2 JOB
//          EXEC PGM=IDCAMS
//SYSPRINT DD  SYSOUT=A
//LIBIN    DD  DSN=LIB1.VOLUMES.PURGED
//SYSIN    DD  *
           LIBRARY DELETE
```

In this example the JOBNAMEs and DEVICES records that were defined for LIB3 will be deleted from the catalog.

```
TSO LIBRARY DELETE LIBNAME(LIB3)
```

## DEMOUNT

Table 8. DEMOUNT parameter

LIBRARY	DEMOUNT	UNIT( <i>unit</i> )
---------	---------	---------------------

### DEMOUNT

De-mount a volume from the drive specified by the UNIT parameter. If a volume to be demounted is ready on the drive, it is unloaded as part of the demount operation.

### UNIT(*unit*)

Specifies the address of the device.

In this example, the volume on unit 123 is to be demounted.

```
TSO LIBRARY DEMOUNT UNIT(123)
```

## DEVICES

Table 9. DEVICES parameter

LIBRARY	DEVICES	( <i>devicerange devicerange...</i> ) [LIBNAME( <i>libname</i> )]
---------	---------	-------------------------------------------------------------------

### DEVICES

Define the device addresses for a library.

#### *devicerange*

From 1 to 8 *devicerange*'s may be specified. Each *devicerange* must contain 6 characters, where the first 3 characters define the starting address and the second 3 characters define the ending address. The ending address must be greater than or equal to the starting address. To specify a single address, the starting address and ending address must specify the same address (for example, 183183).

#### Notes:

1. No test is made to ensure that valid addresses are specified. If invalid addresses are specified the results are unpredictable.



2. The LIBRARY DEVICES command results in the creation of a catalog record named SYS1.BTLS.LIB.LIBn (n is a number from 1 to 8 that corresponds to the library name). Before the catalog record is created, any existing catalog record is deleted. This means that if you are adding devices to an existing BTLS library definition, you must specify both the old device numbers and the new device numbers that are being added.
3. BTLS only supports device numbers in the range 000-FFF.
4. Up to 8 device ranges may be specified for each LIBNAME.
5. Ranges must be specified by changing only the last digit of the address. For example, the range of devices 180 to 1AF must be specified as three ranges ( 18018F 19019F 1A01AF ).

**LIBNAME(*libname*)**

Specifies the name of the library containing the devices (see “Library names” on page 22).

In this example:

1. In the first line of the example, library LIB1(the default), is defined as containing devices 180 to 18F and 190 to 19F.
2. In the second line of the example, library LIB2 is defined as containing devices 1A0 to 1AF and 1B0 to 1BF.

Example:

```

//LIBJOB JOB
// EXEC PGM=IDCAMS
//SYSPRINT DD SYSOUT=A
//SYSIN DD *
LIBRARY DEVICES ( 18018F 19019F )
LIBRARY DEVICES ( 1A01AF 1B01BF ) LIBNAME(LIB2)
```

## INVENTORY

Table 10. INVENTORY parameter

LIBRARY	INVENTORY	UNIT( <i>unit</i> )	CATEGORY( <i>category</i> )
---------	-----------	---------------------	-----------------------------

**INVENTORY**

Obtain a *volser* list for all of the volumes in the *category* specified by the CATEGORY parameter. The inventory list is placed into the data set defined by the LIBOUT DD statement.

**UNIT(*unit*)**

Specifies the address used to send the inventory order to the library.

**CATEGORY(*category*)**

Specifies the category to be inventoried (see “Category names” on page 21).

**Note:** Specify CATEGORY(ALL) to get a list of all volumes in the library. The volumes are listed in ascending order (category is ignored). The only volumes not included in the list are cleaner volumes and service volumes. When a library is partitioned between 2 or more systems, the INVENTORY CATEGORY(ALL) command allows a single system to obtain an inventory for all of the partitions.

The following is an example of category ALL:

```

LIBRARY INVENTORY UNIT(123) CATEGORY(ALL)
```

In this example, an inventory list is to be obtained for all of the volumes in the INSERT category. The *volser* list is created in dataset VOLUME.LIST. The SETCATEGORY command will cause the volumes to be placed in the scratch category in the IBM 3494 and 3495 library manager inventory. The DEFINE command will cause the volumes to be defined in the system catalog as residing in LIB1.

```
//LIBJOB JOB
// EXEC PGM=IDCAMS
//SYSPRINT DD SYSOUT=A
//LIBOUT DD DSN=VOLUME.LIST,DISP=(NEW,KEEP),VOL=SER=DAS001,
// UNIT=3380,DCB=(RECFM=FB,LRECL=80),SPACE=(CYL,(1,1))
//LIBIN DD DSN=VOLUME.LIST,DISP=(OLD,KEEP),VOL=SER=DAS001,
// UNIT=3380
//SYSIN DD *
LIBRARY INVENTORY UNIT(123) CATEGORY(INSERT)
LIBRARY SETCATEGORY UNIT(123) CATEGORY(SCRATCH)
LIBRARY DEFINE
```

## JOBNAMES

Table 11. JOBNAMES parameter

LIBRARY	JOBNAMES	( <i>jobname...</i> )[LIBNAME( <i>libname</i> )]
---------	----------	--------------------------------------------------

### JOBNAMES

Define the list of job names (and procedure names) that should be directed to a library for scratch allocations. Jobnames are not required, they are only used when option 'J' is specified (see "OPTIONS" on page 12).

#### *jobname*

Up to 50 jobnames can be defined for each library (see "Library names" on page 22 for a list of supported names). Jobnames that are less than 8 characters are used as wildcards. The default library name is LIBNAME(LIB1)

#### LIBNAME(*libname*)

Name of the library to which jobs are to be allocated. (see "Library names" on page 22).

In this example, the following jobnames would result in scratch allocations to LIB1:

```
AUTOTAPE
LIB1JOB8
XXXTEST
YYANYJOB
ZLIB1JOB
```

```
//LIBJOB JOB
// EXEC PGM=IDCAMS
//SYSPRINT DD SYSOUT=A
//SYSIN DD *
LIBRARY JOBNAMES (AUTOTAPE LIB1JOB XXX YY Z)
```

### Notes:

1. BTLS allocation searches for jobname matches beginning with the jobnames listed for LIB1, then LIB2-LIB8 jobnames until a match is found (or until all library jobnames are compared).
2. When the JOBNAMES option is chosen and BTLS allocation does not find a match for a jobname it retries the search looking for a started procedure name match.

- The LIBRARY JOBNAMES command causes an existing jobnames catalog record to be deleted and a new one created. For this reason the LIBRARY JOBNAMES command should only be executed when jobs are not using the IBM 3494 and 3495. Also, the LIBRARY JOBNAMES command file should be maintained as a master file to be modified when jobnames changes are required.

## LISTVOL

Table 12. LISTVOL parameter

LIBRARY	LISTVOL	[LIBNAME( <i>libname</i> )]
---------	---------	-----------------------------

### LISTVOL

List the volumes that are cataloged for a library. The volumes are listed in both SYSPRINT and LIBOUT. SYSPRINT lists 10 volumes per line, while the LIBOUT listing is 1 volume per record.

### LIBNAME(*libname*)

Name of the library containing the volumes to be listed (see “Library names” on page 22).

In this example, all of the volumes that are cataloged for LIB1 are listed. Only the SYSPRINT listing is to be used.

```
//LIBJOB1 JOB
//          EXEC PGM=IDCAMS
//SYSPRINT DD SYSOUT=A
//LIBOUT   DD DUMMY,DCB=(LRECL=80,RECFM=FB)
//SYSIN    DD *
           LIBRARY LISTVOL
```

In this example, all of the volumes that are cataloged for LIB2 are listed. Dataset LIB2.VOLUMES will contain a sequential list of the volumes cataloged for LIB2.

```
//LIBJOB2 JOB
//          EXEC PGM=IDCAMS
//SYSPRINT DD SYSOUT=A
//LIBOUT   DD DSN=LIB2.VOLUMES
//SYSIN    DD *
           LIBRARY LISTVOL LIBNAME(LIB2)
```

## MOUNT

Table 13. MOUNT parameter

LIBRARY	MOUNT	UNIT( <i>unit</i> ) [VOLSER( <i>volser</i> )]
---------	-------	-----------------------------------------------

### MOUNT

Mount a volume on the drive specified by the UNIT parameter. If a volume is already mounted on the drive, that volume is unloaded and demounted, before the specified volume is mounted.

### UNIT(*unit*)

Specifies the address of the device.

### VOLSER(*volser*)

Specifies the *volser* to be mounted. If VOLSER(*volser*) is not specified, or if VOLSER(SCRATCH) is specified, a scratch volume is mounted.

The system default category name is SCRTCH. The system default may be changed by specifying a category name in parmlib member BTLPRM00. The category name specified in BTLPRM00 becomes the system default category name. The SETDEVICE command can be used to indicate that a device should use a scratch category name other than the system default. The category used to satisfy a scratch mount issued to a particular device is determined as follows:

- If the SETDEVICE command was used to associate a category name with the device, the category named in SETDEVICE is used.
- If RESETDEVICE was used to restore the default state of the device (or SETDEVICE has never been issued to the device), the system default category name is used. The system default category is determined as follows:
  - If BTLPRM00 was used to specify a scratch category name, that name is used as the system default.
  - If BTLPRM00 was not created, or did not specify a category name, then SCRTCH is used as the system default category name.

**Note:** The category used to satisfy a scratch mount is not affected by the state of an ACL. If the ACL is active with volumes from the category being mounted, the mount is satisfied by an ACL feed. If the ACL is inactive, or active with volumes from a category other than the category being mounted, the mount is satisfied by a storage access (robotic mount).

The VOLSER parameter can be specified using either the alias name VOLUME or the abbreviated name VOL.

In this example, volume VOL001 is be mounted on unit 123.

```
//LIBJOB1 JOB
//          EXEC PGM=IDCAMS
//SYSPRINT DD  SYSOUT=A
//SYSIN     DD  *
LIBRARY MOUNT UNIT(123) VOLSER(VOL001)
```

In this example, a scratch volume is mounted on unit 123.

```
//LIBJOB2 JOB
//          EXEC PGM=IDCAMS
//SYSPRINT DD  SYSOUT=A
//SYSIN     DD  *
LIBRARY MOUNT UNIT(123) VOLSER(SCRTCH)
```

In this example, a scratch volume is mounted on unit 123.

```
//LIBJOB3 JOB
//          EXEC PGM=IDCAMS
//SYSPRINT DD  SYSOUT=A
//SYSIN     DD  *
LIBRARY MOUNT UNIT(123)
```

## OPTIONS

Table 14. OPTIONS parameter

LIBRARY	OPTIONS	(option)
---------	---------	----------

## OPTIONS

The OPTIONS command is used to define the BTLS option characters and to enable or disable other BTLS options. After the OPTIONS command is executed the current state of all BTLS options will be displayed. To display the current state of all BTLS options without changing any options use the LIBRARY OPTIONS(DISPLAY) command.

### *option*

The *option* parameter supplies either the three option characters or the name of an option.

### **XXX**

The three option characters **XXX** are described in Table 15 on page 14. The first option character is used to define the allocation rules regarding scratch allocations. The second option character is used to enable, disable or trace the BTLS allocation support. The third option character is used to enable, disable or trace the BTLS DDR support. If options characters are not specified, the default is **IDD**.

### **AUTODEMOUNT | AUTO**

Indicates that library volumes should be automatically demounted if they become mounted on UNALLOCATED devices. When AUTODEMOUNT is enabled and BTLS detects a mount completion for an **unallocated** device, the volume will be unloaded and demounted. See “Create SYS1.PARMLIB member BTLPRM00” on page 26 for more information about the use of AUTODEMOUNT.

### **NOAUTODEMOUNT | NOAU**

Indicates that library volumes should remain mounted if they become mounted on **unallocated** devices.

### **LIBAFFINITY | LIBA**

Indicates that BTLS should 'break' affinity when an invalid UNIT=AFF condition is detected. If LIBAFFINITY is not used, invalid affinity is reported by message BTLS104I and the job is terminated. See “Create SYS1.PARMLIB member BTLPRM00” on page 26 for more information about the use of LIBAFFINITY.

### **NOLIBAFFINITY | NOLI**

Indicates that BTLS should report invalid affinity with message BTLS104I and terminate the job.

### **EXPDT98000 | EXPD**

The EXPDT98000 option allows a duplicate of a BTLS library volume to be mounted on a drive outside the library.

When the EXPDT98000 option is used, and a DD statement includes EXPDT=98000, BTLS will not validate or interfere with the allocation. This allows you to allocate a drive outside the library for a volser that is defined to BTLS as a library volume.

### **NOEXPDT98000 | NOEX**

Indicates that BTLS should influence allocation without regard to EXPDT=98000.

### **DISPLAY**

Indicates that no options should be changed, but that the status of all options should be displayed as in the following example. **Note:** The option characters specified in the first example are 'JEE'. The first character(J) indicates that JOBNAME is to be used to determine when a scratch allocation should be directed to a library. The second character(E) indicates

that BTLS allocation support should be enabled. The third character(E) indicates that BTLS DDR support should be enabled.

```
OPTION CHARACTERS = JEE
OPTION PARAMETERS:
AUTODEMOUNT= YES
LIBAFFINITY= NO
EXPDT=98000= YES
```

In this example enables the BTLS AUTODEMOUNT function and the third example disables the LIBAFFINITY function. The last example displays the current status of the BTLS options.

```
LIBRARY OPTIONS (JEE)
LIBRARY OPTIONS (AUTO)
LIBRARY OPTIONS (NOLI)
LIBRARY OPTIONS (DISPLAY)
```

Table 15. Specifying BTLS OPTION characters

1	2	3	Description
J			<p>Scratch allocation is based on JOBNAME. When this option is used, scratch allocations to the IBM 3494 and 3495 require that the jobname or procedure name be defined with the LIBRARY JOBNAME command. For a job requiring scratch allocation, when the jobname or procname is defined, the allocation is directed to the devices in the library associated with the jobname. The BTLS allocation code tests for a jobname match first, then tests for a match on the procedure name.</p> <p>When neither a jobname nor procedure name is matched, the allocation is directed away for ALL libraries.</p>
E			<p>Allocation option “E” causes BTLS to direct allocations into or away from a BTLS library based on esoteric unit names. The following esoteric names are supported:</p> <pre>BTLSLIB1 BTLSLIB2 BTLSLIB3 BTLSLIB4 BTLSLIB5 BTLSLIB6 BTLSLIB7 BTLSLIB8</pre> <p>To use the “E” option to manage the BTLS library LIB1, do the following:</p> <ul style="list-style-type: none"> <li>• Define the devices in LIB1 to BTLS as follows: LIBRARY DEVICES (18018F) LIBNAME(LIB1).</li> <li>• Create esoteric name BTLSLIB1 for devices 180-18F.</li> <li>• To allocate LIB1, change JCL to specify UNIT=BTLSLIB1.</li> <li>• Specify LIBRARY OPTIONS(EEE) to activate the BTLS esoteric allocation support.</li> <li>• To allocate away from LIB1, no change is needed. Any allocation other than UNIT=BTLSLIB1 is directed away from LIB1 by BTLS.</li> </ul>
A			<p>ALL scratch allocations should go to a library device. BTLS allocation assist will exclude all non-library devices, thus directing the allocation to a device in ANY library.</p>

Table 15. Specifying BTLS OPTION characters (continued)

1	2	3	Description
M			ALL scratch allocations should go to a manual device. BTLS allocation assist will exclude all library devices, thus directing the allocation to any device outside of a library.
I			Scratch allocations may go to any device. The I option assumes that some factor such as esoteric name is being used to control scratch allocations. BTLS allocation assist does not influence scratch allocations when the I option is used.
	E		Enable BTLS allocation support.
	D		Disable BTLS allocation support.
	T		Trace BTLS allocation support (for diagnostic purposes).
		E	Enable BTLS DDR support.
		D	Disable BTLS DDR support.
		T	Trace BTLS DDR support (for diagnostic purposes).

## REPORT

Table 16. REPORT parameter

LIBRARY	REPORT	[LIBNAME( <i>libname</i> )]
---------	--------	-----------------------------

### REPORT

- Create a report for the library specified by the LIBNAME(*libname*) parameter. The report lists all of the devices defined by the LIBRARY DEVICES command. For each device, the following information is provided:
- Scratch category used to satisfy scratch mount requests.
  - Scratch category assigned to the ICL.
  - VOLSER currently mounted.

Following the device report, a category 'count' report is provided.

### LIBNAME(*libname*)

Name of the library to be reported (see "Library names" on page 22).

In this example, two reports will be generated. The first will report LIB1 information and the second will report LIB2 information.

```
LIBRARY REPORT
LIBRARY REPORT LIBNAME(LIB2)
```

The following is an example of the Library Report:

```
LIB1 DEVICES:   SCRATCH:   ACL STATUS:   VOLUME MOUNTED:
-----
          9A0    SCRATCH1(5)   SCRATCH1     V11111(PRIVATE)
          9A1    SCRATCH2       SCRATCH2     V22222(SCRATCH2)
          9A2(2)  SCRATCH1
          9A3(3)  SCRATCH1
          9A4(4)
          9A5(6)
```

```
NOTE(2): LIBRARY MANAGER HAS MARKED THE DEVICE NOT AVAILABLE
NOTE(3): DEVICE IS NOT AVAILABLE TO THE SYSTEM
NOTE(4): DEVICE IS NOT DEFINED TO THE SYSTEM
NOTE(5): SYSTEM DEFAULT SCRATCH CATEGORY
```

NOTE(6): NOT A 3480, 3490, OR 3590 DEVICE

LIB1	VOLUMES:	TOTAL:	THRESHOLD:
	-----	-----	-----
	SCRTCH1	4500	2000
	SCRTCH2	600	200
	SCRTCH5	300	200
	PRIVATE	2300	

The sample report provides the following information about library LIB1:

- Device 9A0 will use the SCRTCH1 category for scratch mounts, and the stacker for 9A0 is loaded with SCRTCH1 cartridges. SETDEVICE has not been issued to device 9A0, so the default scratch category is used for scratch mounts. The ACL is loaded with SCRTCH1 cartridges as a result of a SETACL command. Private volume V11111 is currently mounted on 9A0.
- Device 9A1 will use the SCRTCH2 category for scratch mounts, and the stacker for 9A1 is loaded with SCRTCH2 cartridges. SETDEVICE was issued to device 9A1 to set the scratch mount category to SCRTCH2. The ACL is loaded with SCRTCH2 cartridges as a result of a SETACL command. SCRTCH2 volume V22222 is currently mounted on 9A1.
- Device 9A2 has been marked unavailable by the library manager.
- I/O to device 9A3 was unsuccessful (most likely because the device is not connected to the host operating system).
- Device 9A4 is defined as a LIB1 library device, but there is no UCB for device 9A4.
- Device 9A5 is not a valid device type.
- The threshold for SCRTCH1 was set using the LIBRARY THRESHOLD command after IPL. SCRTCH2 and SCRTCH5 use the default threshold that was specified in SYS1.PARMLIB(BTLPRM00) because the LIBRARY THRESHOLD command was not used to 'override' the default for these categories.

## RESETACL

Table 17. RESETACL parameter

LIBRARY	RESETACL	UNIT( <i>unit</i> )
---------	----------	---------------------

### RESETACL

Unload the Cartridge Loader of a library device. After a RESETACL order has been issued, scratch mounts issued to the target device will require a storage access (robot mount) rather than an ACL feed.

### UNIT(*unit*)

Specifies the address of the device to be unloaded.

In this example, the Cartridge Loader of device 123 is to be unloaded.

```
//LIBJOB JOB
// EXEC PGM=IDCAMS
//SYSPRINT DD SYSOUT=A
//SYSIN DD *
LIBRARY RESETACL UNIT(123)
```



## RESETDEVICE

Table 18. RESETDEVICE parameter

LIBRARY	RESETDEVICE	UNIT( <i>unit</i> )
---------	-------------	---------------------

### RESETDEVICE

Specifies that scratch mounts for the device are to be satisfied with volumes assigned to the system default scratch category.

#### UNIT(*unit*)

Specifies the address of the device.

In this example, scratch mounts issued to device 123 are to be satisfied with volumes assigned to the default scratch category.

```
//LIBJOB JOB
//      EXEC PGM=IDCAMS
//SYSPRINT DD  SYSOUT=A
//SYSIN  DD  *
LIBRARY RESETDEVICE UNIT(123)
```

## SETACL

Table 19. SETACL parameter

LIBRARY	SETACL	UNIT( <i>unit</i> )	CATEGORY( <i>category</i> )
---------	--------	---------------------	-----------------------------

### SETACL

Load the Cartridge Loader of a library device with cartridges from the category specified by the CATEGORY parameter. If cartridges are loaded in the ACL from another category, they are unloaded before the ACL is loaded with volumes from the new category. The RESETACL command is not required 'between' SETACL commands. The RESETACL command is only required if the ACL is to be unloaded and is to remain unloaded.

**Note:** All of the cartridges assigned to the category specified in a SETACL command must be consistent with the capabilities of the target device (for example, enhanced capacity cartridges require a 3490E device).

#### UNIT(*unit*)

Specifies the address of the device to be loaded.

#### CATEGORY(*category*)

Specifies the category from which cartridges are to be loaded (see "Category names" on page 21).

In this example, the Cartridge Loader of device 123 is to be loaded with volumes from the SCRTCH category.

```
//LIBJOB JOB
//      EXEC PGM=IDCAMS
//SYSPRINT DD  SYSOUT=A
//SYSIN  DD  *
LIBRARY SETACL UNIT(123) CATEGORY(SCRTCH)
```

## SETCATEGORY

Table 20. SETCATEGORY parameter

LIBRARY	SETCATEGORY	UNIT( <i>unit</i> )	CATEGORY( <i>category</i> )	[VOLSER( <i>volser</i> )]
---------	-------------	---------------------	-----------------------------	---------------------------

### SETCATEGORY

Assign a volume to the category specified by the CATEGORY parameter. SETCATEGORY may be abbreviated as SETCAT.

### UNIT(*unit*)

Specifies the address used to send the setcategory order to the library.

### CATEGORY(*category*)

Specifies the category (see “Category names” on page 21).

### VOLSER(*volser*)|VOLSER(*volser-volser*)

Identifies the volume(s) to be assigned to the category. To process a list of volumes, the VOLSER parameter is omitted and the LIBIN data set is used to obtain volume serial numbers.

The VOLSER parameter can be specified using either the alias name VOLUME or the abbreviated name VOL. VOLSER can be used to specify either a single volume or a range of volumes. Use the following rules to specify a range of volume serial numbers:

- Specify six character VOLSERS, separated by a dash (-).
- The first 3 characters of each VOLSER must be the same.
- The last 3 characters of each volume must be numeric.

In the following example:

- Volume SYS001 is assigned to category SCRTCH.
- Volume SYS002 is ejected from the library.
- Volume SYS003 is ejected from the library and the catalog entry for volume SYS003 is deleted (see “Category names” on page 21).

```
//LIBJOB JOB
// EXEC PGM=IDCAMS
//SYSPRINT DD SYSOUT=A
//SYSIN DD *
LIBRARY SETCAT UNIT(123) VOLSER(SYS001) CATEGORY(SCRTCH)
LIBRARY SETCAT UNIT(123) VOLSER(SYS002) CATEGORY(EJECT)
LIBRARY SETCAT UNIT(123) VOLSER(SYS003) CATEGORY(XEJECT)
```

In this example all of the volumes listed in the LIBIN data set are assigned to category SCRTCH.

```
//LIBJOB JOB
// EXEC PGM=IDCAMS
//SYSPRINT DD SYSOUT=A
//LIBIN DD DSN=RETURN.VOLUMES.TO.SCRTCH
//SYSIN DD *
LIBRARY SETCAT UNIT(123) CATEGORY(SCRTCH)
```

## SETCEXIT

Table 21. SETCEXIT parameter

LIBRARY	SETCEXIT	UNIT( <i>unit</i> )
---------	----------	---------------------

## SETCEXIT

Indicates that the SETCATEGORY function is to be performed and that the volume and category are to be provided by the IDCLI04 exit routine (see Appendix C, "Installation exits," on page 55).

### UNIT(*unit*)

Specifies the address used to send the setcategory order to the library.

In this example, the installation exit is invoked by the LIBRARY command and device 123 is used to send set category orders to the library.

```
//LIBJOB JOB
// EXEC PGM=IDCAMS
//SYSPRINT DD SYSOUT=A
//SYSIN DD *
LIBRARY SETCEXIT UNIT(123)
```

## SETDEVICE

Table 22. SETDEVICE parameter

LIBRARY	SETDEVICE	UNIT( <i>unit</i> )	CATEGORY( <i>category</i> )
---------	-----------	---------------------	-----------------------------

## SETDEVICE

Associate a scratch category with a device. Scratch mounts to the device will request a mount of a volume from the associated category.

### UNIT(*unit*)

Specifies the address of the device.

### CATEGORY(*category*)

Specifies the category for scratch mounts to the device. (see "Category names" on page 21).

In this example, enhanced capacity cartridges (CST201, CST202 and CST203) are assigned to the SCRATCH4 category (which is assumed to be empty in this example). Any device in the library may be used to send the SETCATEGORY command to the library. The ACL for device 123 is loaded with the three cartridges. The SETDEVICE command will cause scratch mounts to device 123 to request a volume from the SCRATCH4 category. The mounts are satisfied by an ACL feed.

```
//LIBJOB1 JOB
// EXEC PGM=IDCAMS
//SYSPRINT DD SYSOUT=A
//SYSIN DD *
LIBRARY SETCATEGORY UNIT(180) CATEGORY(SCRATCH4) VOLSER(CST201)
LIBRARY SETCATEGORY UNIT(180) CATEGORY(SCRATCH4) VOLSER(CST202)
LIBRARY SETCATEGORY UNIT(180) CATEGORY(SCRATCH4) VOLSER(CST203)
LIBRARY SETACL UNIT(180) CATEGORY(SCRATCH4)
LIBRARY SETDEVICE UNIT(180) CATEGORY(SCRATCH4)
```

This example is a continuation of the previous example, in which the ACL was loaded with SCRATCH4 volumes and device 123 was set up to use SCRATCH4 for scratch mounts. LIBJOB2 will 'temporarily' set device 123 to use the system default scratch category to satisfy the mount for SYSDD, then restore device 123 to its "normal" scratch category state. Because the ACL for device 123 is loaded with volumes from category SCRATCH4, the mount for SYSDD will require a storage access.

```

//LIBJOB2 JOB
//STEP1 EXEC PGM=IDCAM5
//SYSPRINT DD SYSOUT=A
//SYSIN DD *
LIBRARY RESETDEVICE UNIT(123)
//STEP2 EXEC PGM=XXXXXX
//SYSPRINT DD SYSOUT=A
//SYSDD DD UNIT=123,DISP=(NEW,KEEP),UNIT=3490,
// LABEL=(1,SL),DSN=NEW.DATASET
//STEP3 EXEC PGM=IDCAM5
//SYSPRINT DD SYSOUT=A
//SYSIN DD *
LIBRARY SETDEVICE UNIT(123) CATEGORY(SCRTCH4)

```

## THRESHOLD

Table 23. THRESHOLD parameter

LIBRARY	THRESHOLD	(count) [CATEGORY(category)] [LIBNAME(libname)]
---------	-----------	-------------------------------------------------

### THRESHOLD

Establish a lower limit for the number of scratch volumes. The threshold count applies to a specific scratch category in a specific library. If CATEGORY and LIBNAME are omitted, the default is SCRTCH1 and LIB1. A different threshold can be established for multiple categories in multiple libraries. Valid values for *count* are decimal numbers between 1 and 10,000.

After each scratch mount, BTLs determines the number of volumes remaining in the category that was mounted from. When the number of volumes remaining is less than the threshold for that category, the operator is notified.

The THRESHOLD parameter in BTLPRM00 can also be used to establish a scratch threshold. The threshold specified in parmlib is general in nature, and applies to any category not specified by the THRESHOLD command. The LIBRARY REPORT command should be used to verify the threshold currently in effect for each library device.

### CATEGORY(category)

Specifies the category to which the threshold applies.

### LIBNAME(libname)

Specifies the library to which the threshold applies.

In this example, a threshold of 100 SCRTCH1 volumes is established for library LIB1. A threshold value of 200 is established for SCRTCH2 volumes in LIB1, and a threshold of 300 is established for SCRTCH3 volumes in LIB1.

```

//LIBJOB JOB
// EXEC PGM=IDCAM5
//SYSPRINT DD SYSOUT=A
//SYSIN DD *
LIBRARY THRESHOLD (100)
LIBRARY THRESHOLD (200) CATEGORY(SCRTCH2)
LIBRARY THRESHOLD (300) CATEGORY(SCRTCH3)

```

After the threshold value is set, it will remain in affect until changed by another THRESHOLD command or until the system is IPL'd.

To establish a general 'default' threshold after each IPL create a member BTLPRM00 in SYS1.PARMLIB. Edit the following parameter into member BTLPRM00:

## Category names

The following table lists the category names used by the LIBRARY command. Not all category names are valid with every LIBRARY order. The 'Use' column shows which LIBRARY orders can use each category name as follows:

- I=INVENTORY
- A=SETACL
- S=SETCATEGORY
- D=SETDEVICE
- T=THRESHOLD

The 'LM code' column shows the Library Manager category code.

Table 24. Category names used by the LIBRARY command

Name	Use	LM code	Category Description
INSERT	I	FF00	Volumes received into the library that are not yet assigned to another category.
EJECT	S	FF10	Convenience Station Eject
XEJECT	S	FF10	Same as EJECT. 'X' indicates that, in addition to ejecting the volume from the library, the catalog record for the volume should also be deleted.
EJECTB	S	FF11	Bulk Station Eject
XEJECTB	S	FF11	Same as EJECTB. 'X' indicates that, in addition to ejecting the volume from the library, the catalog record for the volume should also be deleted.
SCRTCH	IASDT	0FFF	Default scratch volume category.
SCRTCH1	IASDT	0FFF	Default scratch volume category (alias name for SCRTCH).
SCRTCH2	IASDT	0FF2	Alternate scratch volume category.
SCRTCH3	IASDT	0FF3	Alternate scratch volume category.
SCRTCH4	IASDT	0FF4	Alternate scratch volume category.
SCRTCH5	IASDT	0FF5	Alternate scratch volume category.
SCRTCH6	IASDT	0FF6	Alternate scratch volume category.
SCRTCH7	IASDT	0FF7	Alternate scratch volume category.
SCRTCH8	IASDT	0FF8	Alternate scratch volume category.
PRIVATE	IS	FFFF	Private volume category.
ERROR	I	F00E	Error Volume category. Volumes are assigned to the error category during demount if the <i>volser</i> specified for demount does not match the external label of the volume being demounted.
CLEANER	I	FFFE	Cleaner volume.
CLEANER2	I	FFFD	3590 Cleaner volume.
SERVICE		FFF9	Service Volume. This category is reported by the COUNTS command, but is not valid with any other LIBRARY command (such as SETACL or INVENTORY).
SERVICE2		FFF6	3590 service volume category.

Table 24. Category names used by the LIBRARY command (continued)

Name	Use	LM code	Category Description
EJECTM	I	FFFA	Manually ejected volume. Volumes in this category still have an entry in the library manager database. The entry can be deleted from the library manager database by specifying the PURGE category in a SETCATEGORY command.
PURGE	S	FFFB	Purge Volume. The PURGE category name is used to remove the library manager database record for a volume that is either manually ejected or misplaced.

---

## Library names

The LIBRARY command can be used to support up to 8 libraries. The LIBNAME parameter is used to identify a library when more than one library is being supported. LIBNAME is not a required parameter when a single library is defined (LIB1 is the default).

The following library names are supported:

- LIB1
- LIB2
- LIB3
- LIB4
- LIB5
- LIB6
- LIB7
- LIB8

---

## Chapter 3. Installation tasks

Install BTLS, following the instructions in the *BTLS Program Directory*. After BTLS has been installed, IPL the system (CLPA) and perform the following tasks.

---

### Authorize the TSO/E LIBRARY command

Authorize the TSO/E LIBRARY command by adding it to IKJTSO00 in SYS1.PARMLIB. After updating IKJTSO00, the command PARMLIB UPDATE(00) will authorize the LIBRARY command. Failure to authorize the LIBRARY command will result in an 047 abend when the command is executed.

---

### Define the LIBRARY command to RACF

If you want to control the use of the new LIBRARY command using RACF, add the following general resource profile:

```
CLASS   ==> PROGRAM
PROFILE ==> IDCLI01
```

Add users or groups to the access list for the profile IDCLI01.

**Note:** If RACF is not installed or the profile IDCLI01 is not created, the LIBRARY command will execute with no authorization check.

---

### Disable catalog name checking

If you are installing BTLS for z/OS DFSMS Version 1 Release 3 (BTLS FMID HDZ11GS), you may need to add the following command to SYS1.PARMLIB member IEACMD00:

```
MODIFY CATALOG,DISABLE(DSNCHECK)
```

You can also issue the MODIFY CATALOG command from the operators console. It is only necessary to disable catalog data set name checking if you will have volsers that begin with a numeric. If data set name checking is allowed, a BTLS command such as LIBRARY DEFINE VOLSER(100033) will receive the following BTLS error message:

```
BTLS011(REFER TO IDC3009I) CATALOG RETCODE= 144 REASON CODE= 14
```

The error occurs because BTLS generates catalog names such as BTLS.BTLS.VOL.100033. Catalog data set name checking does not allow data sets to be cataloged that contain data set qualifiers that begin with a numeric.

**Note:** Data set names that do not match the documented syntax restrictions can be cataloged if you disable the catalog data set name syntax checking feature. Utilities such as IDCAMS will not be able to delete these data set names. Unless the program that creates the invalid names has a facility to delete them you may be left with invalid entries in a catalog that cannot be deleted. Disabling the syntax checking for these BTLS data sets names will disable the syntax checking for all cataloged data sets.

---

## Define the BTLS usercatalog

Define a usercatalog named 'BTLS' that will be used by BTLS to define 'BTLS.BTLS.VOL.volser' catalog records. The catalog must be an ICF catalog and may be defined as shared if library volumes are to be shared by more than one host.

```
DEFINE UCAT (NAME(BTLS) MEGABYTES(1 1) ICFCATALOG -  
            VOLUME(COMCAT) SHAREOPTIONS(3 4))
```

BTLS volume records have the same space requirements as non-VSAM datasets (200 bytes per entry). In the example, space for 5000 volumes is required, so the calculation is:

```
5000 volumes X 200 bytes/record = 1 megabyte
```

The following table lists the catalog records used by BTLS:

*Table 25. BTLS catalog records*

Type	Catalog Record Name	Description
Library	SYS1.BTLS.LIB.LIBn	Defines the device addresses in library n.
Options	SYS1.BTLS.LIB.OPT	Defines the options used by allocation.
Jobname	SYS1.BTLS.JOBn	Defines job names that should use LIBn for scratch allocation.
Volume	BTLS.BTLS.VOL.vvvvvv	Names the library containing volume vvvvvv.

**Note:** If you use the RACF protect-all option (SETROPTS PROTECTALL), you should create a generic profile for the catalog names that BTLS will use as follows:

```
ADDSD 'BTLS.BTLS.VOL.*' UACC(READ) NOTIFY  
ADDSD 'SYS1.BTLS.*' UACC(READ) NOTIFY
```

You can list BTLS catalog entries by specifying:

```
LISTC ENT(BTLS.BTLS.*) ALL  
LISTC ENT(SYS1.BTLS.*) ALL
```

**Attention:** Do not create catalog entries with the names 'SYS1.BTLS.\*' or 'BTLS.BTLS.\*'. These catalog names are used by BTLS and any unexpected entries can caused unpredictable results.

---

## Define library devices to the system

Define library devices to the operating system using either MVSCP or HCD. The following example uses MVSCP to define the 3490 devices in both a 3494 and 3495 library. In the third example, one physical library with 32 devices will be partitioned as 2 logical BTLS libraries (with 16 drives in each library).



```

IODEVICE UNIT=3490,ADDRESS=(180,16)
IODEVICE UNIT=3490,ADDRESS=(190,16)
UNITNAME NAME=3495LIB1,UNIT=((180,16),(190,16))

IODEVICE UNIT=3490,ADDRESS=(1A0,2)
IODEVICE UNIT=3490,ADDRESS=(1B0,2)
UNITNAME NAME=3494LIB2,UNIT=((1A0,2),(1B0,2))

IODEVICE UNIT=3490,ADDRESS=(1C0,16)
IODEVICE UNIT=3490,ADDRESS=(1D0,16)
UNITNAME NAME=3495LIB3,UNIT=((1C0,16))
UNITNAME NAME=3495LIB4,UNIT=((1D0,16))

```

Be sure to code UNITNAME for each library (or for each logical library if you decide to partition library devices). The esoteric name does not need to match the BTLS library name (for example, LIB1,LIB2), but the esoteric group must include the same set of devices defined by the BTLS LIBRARY DEVICES command.

Creation of UNITNAMEs that match the BTLS library devices is done to ensure that allocation recovery messages will only include the appropriate devices. When BTLS is able to exclude an entire group of devices from allocation (the 3494LIB2 group for example), those devices will remain excluded during allocation recovery.

**Note:** A 3490 control unit in a 3495 can contain up to 16 tape drives. If any of the control units in a 3495 library have less than 16 drives, all 16 possible addresses must still be defined in the host (and to BTLS).

A 3490 control unit in a 3494 library can contain up to two tape drives. If any of the control units in a 3494 library has only one drive, both addresses must still be defined in the host. For a 3494 tape library it is not necessary to define more than two addresses for each control unit.

**Note:** BTLS support for 4 digit device numbers is provided as follows:

- Support is provided with JDZ11BS.
- For releases prior to JDZ11BS, support is provided by OW12877.
- Library devices must be restricted to the 4 digit address range 0000-0FFF.
- All other devices, including tape drives can use any of the 4 digit addresses in the range 0000-FFFF.
- BTLS commands and messages use only the three significant digits 000-FFF and assume that the fourth digit is always zero.

## VM/ESA guest

**Note:** When BTLS is installed as a VM/ESA guest on a virtual machine specify the following statement in the virtual machine directory entry to allow BTLS to control a tape library:

```
STDEVOPT LIBRARY CTL
```

---

## Define library devices to BTLS

Define library devices to BTLS using either the TSO LIBRARY DEVICES command:

```
LIBRARY DEVICES (18018F 19019F) LIBNAME(LIB1)
LIBRARY DEVICES (1A01A1 1B01B1) LIBNAME(LIB2)
LIBRARY DEVICES (1B01BF) LIBNAME(LIB3)
LIBRARY DEVICES (1C01CF) LIBNAME(LIB4)
```

or by running a job that executes IDCAMS:

```
//LIBJOB JOB
// EXEC PGM=IDCAMS
//SYSPRINT DD SYSOUT=A
//SYSIN DD *
LIBRARY DEVICES (18018F 19019F) LIBNAME(LIB1)
LIBRARY DEVICES (1A01A1 1B01B1) LIBNAME(LIB2)
LIBRARY DEVICES (1B01BF) LIBNAME(LIB3)
LIBRARY DEVICES (1C01CF) LIBNAME(LIB4)
```

See Table 9 on page 8 for more information about defining device ranges.

---

## Create SYS1.PARMLIB member BTLPRM00

BTLPRM00 is used to specify parameters that define defaults used by BTLS. Each parameter statement must begin in column 1. Columns that follow a parameter statement are ignored and may be used for comments. The following BTLPRM00 parameter statements are supported:

**THRESHOLD**(*count*) - Establishes a low threshold value for scratch volumes. When the number of scratch volumes falls below the *count* the operator receives an attention message.

The threshold value established at IPL by the THRESHOLD parameter is replaced when the LIBRARY THRESHOLD command is executed. If more than one threshold value is required, either to support multiple libraries or multiple scratch categories, use the LIBRARY THRESHOLD command after IPL. The LIBRARY REPORT command can be used to display the threshold value(s) that have been established.

**SCRATCH***n* - The purpose of the BTLPRM00 *SCRATCHn* parameter is to override the default category used to satisfy scratch mounts. Unless specified, scratch mounts use volumes assigned to the SCRATCH1 library category (category code 'OFFF'X).

When more than one host share a library, a different scratch category can be used by each host. The BTLPRM00 parmlib member for each host names the scratch category that host will use for scratch mounts.

**AUTODEMOUNT** - Indicates that library volumes should be automatically demounted if they become mounted on UNALLOCATED devices. When AUTODEMOUNT is specified and BTLS detects a mount completion for an UNALLOCATED device, the volume will be unloaded and demounted.

In a BTLS library, a volume can become mounted on an unallocated device when a job is cancelled or ends abnormally while *mount pending*. Because the mount is not complete before the job terminates, a demount is not sent to the library. Even

though the job is terminated, the library mount will eventually complete in the library. If the device has not yet been allocated to another job, the volume will stay mounted.

The purpose of AUTODEMOUNT is to solve the following two problems created by volumes mounted on unallocated drives:

1. If another job allocates the drive and needs a private volume mounted, the job will demount(*keep*) the previously mounted volume. The demount will cause a scratch volume to be assigned to the private category even though it was never used.
2. If another job allocates a different tape drive and needs a volume that is already mounted on an unallocated drive, the mount will fail with ERA=64 (volume in use).

**LIBAFFINITY** - indicates that BTLS should 'break' affinity when an invalid UNIT=AFF condition is detected. If LIBAFFINITY is not used, invalid affinity is reported by message BTLS104I and the job is terminated.

In order to validate affinity, BTLS compares the allocation requirements of the target DD(DD1) and the UNIT=AFF DD(DD2). The following conditions are valid:

- Both DD1 and DD2 require drives in the same library.
- Both DD1 and DD2 require non-library drives.
- Either DD1 or DD2 can use **any** drive. BTLS allows **any** drive when option 'I' is used to control scratch allocation and for any SCRATCH request that specifies UNIT=AFF.

When an invalid condition is detected, and the LIBAFFINITY option is in effect, BTLS breaks the invalid affinity. The following example shows how BTLS will break affinity.

```
//DD1 DD VOL=SER=VOL001,UNIT=TAPE
// DD VOL=SER=VOL002,UNIT=AFF=DD1
// DD VOL=SER=VOL003,UNIT=AFF=DD1
// DD VOL=SER=VOL004,UNIT=AFF=DD1
```

NOTE: VOL001 and VOL004 are defined to BTLS as LIB1  
VOL002 and VOL003 are not defined to BTLS

When the above JCL is executed, BTLS directs the allocation for DD1 into LIB1, but will detect an error because VOL002 is not in LIB1 (yet specifies affinity with DD1). When the LIBAFFINITY option is in effect, BTLS causes the JCL to allocate as if it were written as follows:

```
//DD1 DD VOL=SER=VOL001,UNIT=TAPE
//DD2 DD VOL=SER=VOL002,UNIT=TAPE
// DD VOL=SER=VOL003,UNIT=AFF=DD2
// DD VOL=SER=VOL004,UNIT=AFF=DD1
```

In order for LIBAFFINITY to successfully break affinity, the set of devices determined by the UNIT parameter of the target DD must include devices that will also satisfy the requirements of the 'broken' DD.

If the example JCL was coded as follows, the allocation for VOL002 would fail because UNIT=LIB1DEVS names an esoteric that does not include any devices in LIB2 (and VOL002 is defined to BTLS as a LIB2 volume).

```
//DD1 DD VOL=SER=VOL001,UNIT=LIB1DEVS
// DD VOL=SER=VOL002,UNIT=AFF=LIB1
// DD VOL=SER=VOL003,UNIT=AFF=LIB1
// DD VOL=SER=VOL004,UNIT=AFF=LIB1
```

**Note:** LIBAFFINITY is only supported on releases prior to MVS/SP 5.2.

**EXPDT98000 | EXPD** - The EXPDT98000 option allows a duplicate of a BTLS library volume to be mounted on a drive outside the library.

When the EXPDT98000 option is used, and a DD statement includes EXPDT=98000, BTLS will not validate or interfere with the allocation. This allows you to allocate a drive outside the library for a volser that is defined to BTLS as a library volume.

The following statements are examples of valid BTLPRM00 records:

```
/******
/* UNRECOGNIZED DATA IN COLUMN 1 IS IGNORED, SO THIS COMMENT IS OK */
/******
THRESHOLD(50) /* set minimum threshold for scratch */
AUTODEMOUNT /* demount unallocated drives */
LIBAFFINITY /* break invalid library affinity */
```

## Install the BTLS allocation interface

For releases prior to MVS/SP 5.1 ensure that APAR OY63009 is installed (OY63009 is included with MVS/SP 5.1). OY63009 provides the interface used by BTLS to control tape allocations.

OY63009 is not used with MVS/SP 5.2. Instead, BTLS uses the tape allocation subsystem interface. When MVS/SP 5.2 is installed, add the following command to SYS1.PARMLIB member IEACMD00:

```
SETSSI ADD,SUBNAME=BTLS,INITRTN=AOMALSSI
```

You can also issue the SETSSI command from the operators console. The SETSSI command activates the BTLS Tape Allocation SSI so that BTLS can begin to control tape allocations. When the command executes, the following messages should be received at the operators console:

```
BTLS401I START OF BTLS INITIALIZATION
BTLS402I BTLS INITIALIZATION COMPLETE
```

**Note:** To ensure that BTLS allocation is properly installed, use the trace option 'T' (see Table 15 on page 14). If BTLS trace data is not produced for tape allocations, this indicates that the BTLS allocation module is not being invoked. The BTLS allocation module is AOMAB433 (AOMALLOC for MVS/SP 5.2).

---

## Insert volumes into the IBM 3494 and 3495

When volumes are entered into the library they are assigned to the INSERT category by the 3494/3495 Library Manager. Use the LIBRARY INVENTORY command to obtain a list of the volumes in the INSERT category. SYSPRINT will display the number of volumes and the LIBOUT dataset will contain a list of the volume serial numbers. The LIBOUT dataset can be used as input to other LIBRARY command operations.

```
//LIBJOB JOB
//      EXEC PGM=IDCAMS
//SYSPRINT DD SYSOUT=A
//LIBOUT DD DSN=VOLSER.LIST,
//      DD DISP=(NEW,KEEP),VOL=SER=VOL001,UNIT=3390,
//      DD DCB=(LRECL=80,BLKSIZE=800,RECFM=FB)
//SYSIN DD *
LIBRARY INVENTORY UNIT(180) CATEGORY(INSERT)
```

---

## Assign volumes to SCRATCH or PRIVATE category

Determine which volumes should be private and which should be scratch, then use the LIBRARY SETCATEGORY command to assign each volume to the appropriate category. In this example, all of the volumes in the LIBIN data set are assigned to the scratch category.

```
//LIBJOB JOB
//      EXEC PGM=IDCAMS
//SYSPRINT DD SYSOUT=A
//LIBIN DD DSN=VOLSER.LIST
//SYSIN DD *
LIBRARY SETCATEGORY UNIT(180) CATEGORY(SCRATCH)
```

---

## Create BTLS volume catalog records

Create BTLS volume catalog records using the LIBRARY DEFINE command. For specific volume requests, BTLS allocation uses BTLS volume records to control allocation. If a BTLS volume record is found, BTLS will direct allocation into the library that was named by the LIBRARY DEFINE command. If a BTLS volume record is not found, then BTLS will direct allocation to a non-library device.

In this example, all of the volumes in the LIBIN data set are cataloged as residing in library LIB1. LISTVOL will produce a SYSPRINT listing of the cataloged volumes. In the example the LIBOUT will not be used, so is specified as DUMMY.

```
//LIBJOB JOB
//      EXEC PGM=IDCAMS
//SYSPRINT DD SYSOUT=A
//LIBIN DD DSN=VOLSER.LIST
//LIBOUT DD DUMMY,DCB=(LRECL=80,RECFM=FB)
//SYSIN DD *
LIBRARY DEFINE LIBNAME(LIB1)
LIBRARY LISTVOL LIBNAME(LIB1)
```

**Note:** In the example, LIBNAME(LIB1) is optional since LIB1 is the default when LIBNAME is omitted.

---

## Initialize volumes using IEHINITT

Use IEHINITT to label any cartridges that require volume labels:

```
//LABELJOB JOB
//LABEL EXEC PGM=IEHINITT
//SYSPRINT DD SYSOUT=*
//DD1 DD UNIT=(xxxx,,DEFER)
//SYSIN DD *
DD1 INITT SER=001901
DD1 INITT SER=001902
DD1 INITT SER=001903
DD1 INITT SER=001904
DD1 INITT SER=001905
```

For xxxx specify 3480 for 3480 cartridges, 3490 for 3490 cartridges, and 3590-1 for 3590 cartridges.

Reply 'M' to console message IEC701D for each volume (or automate the response). The LIBRARY SETCATEGORY command should be used to assign the volumes to the appropriate category for use.

---

## Define the BTLS options

Define the BTLS option characters using the LIBRARY OPTIONS command. The characters JEE indicate that scratch allocations should be based on JOBNAME and that BTLS allocation and DDR support should be enabled.

```
//LIBJOB JOB
// EXEC PGM=IDCAMS
//SYSPRINT DD SYSOUT=A
//SYSIN DD *
LIBRARY OPTIONS (JEE)
```

---

## Control SCRATCH allocation

You must decide how scratch allocations are to be controlled. If you have 3490 drives inside a library and 3490 drives outside a library this difference must be considered during allocation. When a specific volume is required, the decision is simple for BTLS. If there is a BTLS volume record in the catalog, BTLS directs allocation to the library named in the volume record. If there is no BTLS volume record in the catalog, BTLS directs allocation to tape drives outside the library.

For scratch requests, you must tell BTLS when to allocate inside the library and when to allocate outside the library. The first of the 3 BTLS option characters (see Table 15 on page 14) tells BTLS how to manage scratch allocations.

If you have decided to route scratch allocations into the library based on JOBNAME, you must identify the jobs to BTLS. In the following example the jobname TAPELIB1 will use LIB1 for scratch allocation, as well as any jobname that begins with the name AUTO or HSM. All other jobs will be allocated away from LIB1.

```
//LIBJOB JOB
// EXEC PGM=IDCAMS
//SYSPRINT DD SYSOUT=A
//SYSIN DD *
LIBRARY JOBNAME ( TAPELIB1 AUTO HSM ) LIBNAME(LIB1)
```

Be aware that once a scratch allocation has been made, and the tape dataset has been created and cataloged, the next reference to that dataset will be a specific request for the volume. As previously stated, the specific allocation for the volume will be determined by the BTLS volume catalog records.





---

## Chapter 4. Messages and codes

This chapter contains messages you can receive while using the Basic Tape Library Support (BTLS). They are grouped as follows:

Section	Page
Allocation messages	33
LIBRARY command messages	34
IBM 3494 and 3495 error messages	38
Dynamic device reconfiguration (DDR) messages	39
Tape allocation SSI initialization	40
Tape allocation SSI	40
BTLS abnormal end codes	42

For any system messages you receive, see the respective messages publication listed in “Referenced documents” on page xi. Each of these publications contain the messages for the respective operating system.

---

### Allocation messages

---

#### **BTLS101I ALLOCATION ASSIST INSTALLED AND NO LIBRARY ENTRY FOUND. WILL CAUSE IEF245I MESSAGE.**

**Explanation:** The LIBRARY OPTIONS command specified enable ('E') as the allocation option, and no library devices have been defined to BTLS.

**System Action:** BTLS marks all of the devices ineligible for allocation, which will cause the job to fail.

**System Programmer Response:** Either disable BTLS allocation using the LIBRARY OPTIONS command, or define library devices using the LIBRARY DEVICES command.

---

#### **BTLS102I ALLOCATION ASSIST, VOL/JOB/LIB AFFINITY ENTRY IN CATALOG - NO LIB ENTRY FOUND. WILL CAUSE IEF245I MESSAGE.**

**Explanation:** The volume required for allocation is defined to BTLS as a library volume residing in library 'LIBn'. BTLS allocation cannot locate the LIBRARY DEVICES catalog record for library 'LIBn'.

**System Action:** BTLS marks all of the devices ineligible for allocation, which will cause the job to fail.

**System Programmer Response:** Either delete the volume from 'LIBn' using the LIBRARY DELETE command, or define library 'LIBn' using the LIBRARY DEVICES command.

---

#### **BTLS103I ALLOCATION ASSIST, NO ELIGIBLE DEVICES. WILL CAUSE IEF245I MESSAGE.**

**Explanation:** In attempting to direct allocation into a library (or away from all libraries), BTLS has excluded all of the eligible devices.

For example, the following conditions will create this error:

```
UNITNAME NAME=3494LIB,UNIT=((1A0,2))
LIBRARY DEVICES (1A01A1) LIBNAME(LIB1)
.
LIBRARY SETCATEGORY VOLSER(T12345) -
UNIT(1A0) CATEGORY(EJECTX)
.
.
//TESTDD DD UNIT=3494LIB,VOL=SER=T12345
```

In the example, T12345 had been in the 3494 library and was defined to BTLS as a LIB1 tape. However, at some point T12345 was ejected from the library using EJECTX (which deleted the BTLS catalog record for T12345).

During allocation for TESTDD, the only eligible devices are 1A0 and 1A1. Because there is no BTLS volume record for T12345, BTLS assumes that it requires a tape drive outside the library and excludes devices 1A0 and 1A1 from allocation.

**System Action:** BTLS marks all of the devices ineligible for allocation, which will cause the job to fail.

**System Programmer Response:** If T12345 is in the

## Messages

library, use the LIBRARY DEFINE command to define the volume to BTLS. If T12345 is *not* in the library, change the UNIT= esoteric name to one that contains manual tape drives.

In the example, T12345 could have been ejected using the EJECT category, which does not delete the BTLS catalog record. Then the allocation would succeed, and the mount will fail with message 'T12345,VOLSER NOT IN LIBRARY'. The mount failure message allows the operator to enter the volume into the library and then redrive the mount.

---

### BTLS104I UNIT AFFINITY NOT ALLOWED FOR VOLUMES IN AND OUT OF THE LIBRARY. WILL CAUSE IEF245I MESSAGE.

**Explanation:** The source and target of UNIT=AFF must satisfy the following requirement. Either both volumes must reside in the same library, or both volumes must reside outside of any library.

In order to validate affinity, BTLS compares the allocation requirements of the target DD(DD1) and the UNIT=AFF DD(DD2). The following conditions are valid:

- Both DD1 and DD2 require a drive in the same library.
- Both DD1 and DD2 require a non-library drive.
- Either DD1 or DD2 can use **any** drive. BTLS allows **any** drive when option 'I' is used to control scratch allocation.

**System Action:** BTLS marks all of the devices ineligible for allocation, which will cause the job to fail.

**System Programmer Response:** If both volumes are in the same library, ensure that they are both properly defined to BTLS (use the LIBRARY DEFINE command). If both volumes are to be manually mounted, ensure that neither is defined to BTLS (use the LIBRARY DELETE command).

**System Programmer Response:** Optionally, consider using the LIBAFFINITY option described in "Library names" on page 22.

---

## LIBRARY command messages

---

### BTLS000I ERA=xx,msgtext

**Explanation:** A Tape Library I/O error occurred. In the message 'xx' is the Error Recovery Action code (ERA) returned in sense byte 3. The following errors are reported with message BTLS001I:

---

### BTLS105I ALLOCATION ASSIST ERROR WHILE PROCESSING DDNAME: ddname

**Explanation:** This message identifies the DD statement that caused a BTLS allocation error message to be issued.

---

### BTLS106I ALLOCATION ASSIST INVALID OPTION SPECIFIED. WILL CAUSE IEF245I MESSAGE.

**Explanation:** The SYS1.BTLS.LIB.OPT contains an invalid allocation option value. The first character of the options must be A,I,J or M.

**System Action:** BTLS marks all of the devices ineligible for allocation, which will cause the job to fail.

**System Programmer Response:** Redefine the BTLS options using the LIBRARY OPTIONS command.

---

### BTLS107I CATALOG SEARCH FOR: BTLS.BTLS.VOL.VVVVVV, FAILED WITH RETURN CODE= xx

**Explanation:** An unexpected return code was received while searching the catalog for a BTLS volume record. The expected return codes are 0 and 8, which indicate either that the volume record was found or that it was not found. An example of an unexpected return code is 36, which indicates that the volume containing the user catalog is unavailable.

**System Action:** BTLS marks all of the devices ineligible for allocation, which will cause the job to fail.

**System Programmer Response:** Refer to message IDC3009I to interpret the return code. Attempt to list the catalog record using the following command:

```
LISTC ENTRY('BTLS.BTLS.VOL.VVVVVV') ALL
```

```
BTLS000I ERA=60,ATTACHMENT INTERFACE EQUIPMENT CHECK
BTLS000I ERA=62,LIBRARY MANAGER OFFLINE TO SUBSYSTEM
BTLS000I ERA=63,LIBRARY MANAGER & 3490 INCOMPATIBLE
BTLS000I ERA=64,vvvvvv,VOLUME IN USE
BTLS000I ERA=66,vvvvvv,VOLSER NOT IN LIBRARY
BTLS000I ERA=67,CATEGORY EMPTY
BTLS000I ERA=68,SEQUENCE CHECK
BTLS000I ERA=6B,vvvvvv,LIBRARY VOLUME MISPLACED
BTLS000I ERA=6D,LIBRARY DRIVE NOT UNLOADED
BTLS000I ERA=6F,VISION FAILURE
BTLS000I ERA=72,LIBRARY NOT CAPABLE - MANUAL MODE
BTLS000I ERA=75,vvvvvv,VOLUME INACCESSIBLE
BTLS000I ERA=7B,vvvvvv,VOLUME MANUALLY EJECTED
BTLS000I ERA=7F,LIBRARY CATEGORY IN USE
```

**Problem Determination:** See Chapter 5, "Error recovery procedures," on page 43 and Table 26 on page 44.

---

**BTLS001I I/O TO DEVICE *ddd* FAILED WITH IOSCOD= *ioscod***

**Explanation:** This error message is issued when I/O to a library device has failed. In the message '*ddd*' is the device address and '*ioscod*' is the I/O completion code from the IOSB control block.

**Problem Determination:** IOSCOD=41 indicates that the I/O operation encountered a permanent hardware error. Additional values for IOSCOD can be found in macro IECDIOSB.

---

**BTLS002I SENSE= *sense bytes***

**Explanation:** This error message is issued when IBM 3494 and 3495 I/O fails due to a unit check.

---

**BTLS006I UNABLE TO FIND UCB FOR *ddd***

**Explanation:** The UCB for the device address specified in the UNIT(*ddd*) parameter cannot be found.

**System Action:** The LIBRARY command is terminated with condition code 12.

**System Programmer Response:** Probably an incorrect device number was specified on the UNIT(*ddd*) parameter. Correct the device number and re-issue the command.

---

**BTLS007I ERROR READING FROM LIBIN**

**Explanation:** This error message is issued when IDCAMS indicates that a read from LIBIN failed. Existing IDCAMS messages will explain the nature of the failure.

Message BTLS007I is also issued when the first character in a LIBIN record is blank.

**System Action:** The LIBRARY command is terminated with condition code 12.

---

**BTLS008I LIBIN VOLSER(*volser*)**

**Explanation:** This informational message is issued for each volume serial read from the LIBIN data set. This message provides a SYSOUT list of the volumes affected by SETCATEGORY.

---

**BTLS009I UNDEFINED CATEGORY SPECIFIED**

**Explanation:** this error message is issued when a CATEGORY(*name*) is not one of the supported category names.

**System Action:** The LIBRARY command is terminated with condition code 12.

**System Programmer Response:** See "Category names" on page 21 for a list of the valid category names. To support migration the category names SMSPRIV,SMSMED1 and SMSMED2 are also supported.

---

**BTLS010I USER EXIT VOLSER(*volser*) CATEGORY(*category*)**

**Explanation:** This informational message is issued by the SETCEXIT routine for each return from the user exit. If the setcategory operation is successful no additional message is issued. If the setcategory operation fails an error message is issued.

---

**BTLS011I (REFER TO IDC3009I) CATALOG RETCODE= *xx* REASON CODE= *xx***

**Explanation:** This error message is issued when a catalog DEFINE or DELETE operation fails. Message IDC3009I documents the return and reason codes.

---

**BTLS013I ENTRY(*catalog.dataset.name*) DELETED FROM CATALOG**

**Explanation:** This message is issued when a catalog delete operation completes. If the operation fails the message will indicate 'NOT DELETED' and message BTLS011I will also be issued.

---

**BTLS014I ENTRY(*catalog.dataset.name*) DEFINED IN CATALOG**

**Explanation:** This message is issued when a catalog define operation completes. If the operation fails the message will indicate 'NOT DEFINED' and message BTLS011I will also be issued.

---

**BTLS015I ENTRY(*catalog.dataset.name*) NOT LOCATED IN CATALOG**

**Explanation:** This message is issued when a catalog locate operation fails to locate an expected catalog record.

**System Action:** The LIBRARY command is terminated with return code 12.

**System Programmer Response:** Review additional BTLS messages to determine the cause of the error.

---

**BTLS016I LIBRARY UNIT MISSING OR INVALID**

**Explanation:** A LIBRARY command does not include the UNIT parameter, and it is required.

**System Action:** The LIBRARY command is terminated with return code 12.

**System Programmer Response:** Include the UNIT(*ddd*) parameter and resubmit the command.

## Messages

---

### BTLS017I INVENTORY CONTAINS WARNING OR INFORMATIONAL DATA

**Explanation:** This message is issued when an INVENTORY operation is performed and one or more of the volume records in the inventory list contains any of the following:

VOLUME INACCESSIBLE  
VOLUME MOUNTED  
VOLUME PENDING EJECT  
VOLUME BEING EJECTED  
VOLUME IS MISPLACED  
VOLUME HAS AN UNREADABLE LABEL  
VOLUME WAS USED DURING MANUAL MODE  
VOLUME WAS MANUALLY EJECTED

**System Action:** The LIBRARY INVENTORY command executes to completion, but set return code 4 at termination.

**System Programmer Response:** Search the LIBOUT volume list for the word 'VOLUME', to find the volume records in error.

---

### BTLS018I NUMBER OF VOLUMES IN CATEGORY IS: *nnn*

**Explanation:** Informational message issued when an INVENTORY operation is performed.

---

### BTLS019I NUMBER OF VOLUMES IN CATEGORY (*catname*)= *nnnn*

**Explanation:** Informational message issued when a COUNTS operation is performed.

---

### BTLS021I OPERATION COULD NOT BE STARTED

**Explanation:** This message is issued when a LIBRARY MOUNT or LIBRARY DEMOUNT order cannot be started. The LIBRARY command uses Message Display to send a mount or demount request to the library. If the request cannot be started, an error message is sent to the operators console by message display, and message BTLS021I is issued by the LIBRARY command.

**System Action:** The LIBRARY command is terminated with return code 12.

**Problem Determination:** Review BTLS messages sent to the operators console to determine the reason for the failure.

---

### BTLS022I INVALID OPTION SPECIFIED

**Explanation:** An unsupported option character was specified on the LIBRARY OPTIONS command. Table 15 on page 14 lists the supported options.

**System Action:** The LIBRARY OPTIONS command is terminated with return code 12.

---

### BTLS023I INVALID LIBRARY NAME

**Explanation:** The supported library names are LIB1,LIB2,LIB3,LIB4,LIB5,LIB6, LIB7, and LIB8.

**System Action:** The LIBRARY command is terminated with return code 12.

---

### BTLS024I INVALID VOLSER

**Explanation:** A VOLSER was specified with a blank as the first character.

**System Action:** The LIBRARY command is terminated with return code 12.

---

### BTLS025I TOO MANY PARAMETERS SPECIFIED

**Explanation:** For the LIBRARY DELETE command, both the LIBNAME and VOLSER parameter were specified. Only one parameter(LIBNAME or VOLSER) is allowed for LIBRARY DELETE.

**System Action:** The LIBRARY DELETE command is terminated with return code 12.

---

### BTLS026I INVALID DEVICE TYPE FOR *ddd*

**Explanation:** Unit control block (UCB) for device *ddd* is an invalid device type. UCBs for library devices supported by BTLS must be defined to the system as either 3480, 3490, or 3590.

**System Action:** The LIBRARY command is terminated with return code 12.

---

### BTLS027I INVALID CHARACTERS IN JOBNAME: *jobname*

**Explanation:** One of the jobnames specified by the LIBRARY JOBNAMES command contains an invalid character. The invalid character(s) will be displayed as periods ('.'). For example, the jobname MY&&JOB will display as MY..JOB. The valid characters for jobnames are the numbers 0-9, the uppercase alphabetic characters, and the national characters \$, # and @. Message BTLS027I is also received if a jobname contains a numeric (0-9) as the first character.

**System Action:** The LIBRARY JOBNAMES command is terminated with return code 12.

**System Programmer Response:** Correct the invalid jobname and re-issue the command.

---

### BTLS031I RACF RETURN CODE= *xx*

**Explanation:** IDCLI01 is defined as a RACF profile, but the user is not authorized to use IDCLI01. The return code from RACF is displayed:

- 08 - IDCLI01 profile defined but user not authorized.

**System Action:** The LIBRARY command is terminated with return code 12.

**System Programmer Response:** See Chapter 3, "Installation tasks," on page 23 for a description of the BTLS RACF requirements.

---

**BTLS032I BTLS IS DISABLED**

**Explanation:** BTLS has been disabled by the installation of OW03323, OW17868, OW18860, or OW28259.

---

**BTLS040I AUDIT, *vvvvvv*, *error text***

**Explanation:** A LIBRARY AUDIT for volume *vvvvvv* failed for the reason indicated by *error text*. Possible *error text* for audit failure are:

VOLSER NOT READABLE  
VOLUME INACCESSIBLE  
VOLUME MISPLACED  
MANUALLY EJECTED  
NOT IN LIBRARY

**System Action:** The LIBRARY AUDIT command will continue with the next LIBIN volume, but will set return code 4 when all audits have completed.

---

**BTLS041I AUDIT ALREADY IN PROGRESS**

**Explanation:** Only one audit at a time is allowed from each host and a previous audit has not yet completed.

**System Action:** The LIBRARY AUDIT command is terminated with return code 8.

**System Programmer Response:** Wait until the previous audit completes, then resubmit the new audit request. If there is no previous audit in progress, then a prior audit may have abnormally ended. In this case the BTLS041I message is erroneous, so specify the FORCE keyword on the LIBRARY AUDIT command.

---

**BTLS046I AUDIT, *vvvvvv*, FAILED**

**Explanation:** A LIBRARY AUDIT for volume *vvvvvv* failed for an indeterminate reason.

The audit was performed by the library manager and the audit completion code indicated a failure other than the failures reported by message BTLS040I.

**System Action:** The LIBRARY AUDIT command will continue with the next LIBIN volume, but will set return code 4 when all audits have completed.

**System Programmer Response:** Report the failure to you service representative.

---

**BTLS049I AUDIT, *vvvvvv*, SUCCESSFUL**

**Explanation:** Informational message. The AUDIT for volume *vvvvvv* completed successfully.

---

**BTLS050I DEVICETYPE MUST BE 3490, 3490E, or 3590**

**Explanation:** The supported device types for LIBRARY MIGRATION are 3490, 3490E, and 3590.

**System Action:** The LIBRARY MIGRATE command is terminated with return code 12.

**System Programmer Response:** Probably an incorrect device number was specified on the UNIT(ddd) parameter. Correct the device number and re-issue the command.

---

**BTLS051I NUMBER OF VOLUMES PROCESSED IS: *nnn***

**Explanation:** Informational message. Displays the number *nnn* of volumes processed by a LIBRARY MIGRATE command.

---

**BTLS052I VOLUME *vvvvvv* IS NOT MANUALLY EJECTED OR MISPLACED**

**Explanation:** The SETCATEGORY CATEGORY(PURGE) VOLSER(*vvvvvv*) command was issued and volume *vvvvvv* is not in either the MANUALLY EJECTED category or the MISPLACED category. Only volumes in the MANUALLY EJECTED or MISPLACED category can be purged.

---

**BTLS053I *libname* IS NOT DEFINED**

**Explanation:** The catalog record for SYS1.BTLS.LIB cannot be located.

**System Action:** The LIBRARY REPORT command is terminated.

**System Programmer Response:** Define the SYS1.BTLS.LIB.*libname* catalog record by executing the LIBRARY DEVICES command

## IBM 3494 and 3495 error messages

---

**BTLS**      **[\*](ERA|COD|MSG=xx,IIII) [volser,] error description**

---

**BTLS**      **[\*](ERA|COD|MSG=xx,o,ddd) [volser,] error description**

---

**Explanation:** This message is issued to report either a mount or demount error, or to report an asynchronous error reported by the library. Asynchronous errors are displayed with the message number 'BTLS\*' (where the '\*' indicates that the error was asynchronous).

A successful mount or demount order occurs as follows. The order is issued to the library by the host and is accepted. When the library completes the order, an asynchronous completion message is returned to the host from the library. The completion message contains status indicating that the order was successful.

A mount or demount order can fail in two ways:

- The order may fail initially, before being accepted by the library. These failures are reported to the host with a unit check and sense data. Unit check failures are reported to the operator using message number 'BTLS'.
- The order may be accepted by the library, then fail when the library attempts to execute the order. These failures are reported to the host with an asynchronous completion message. Asynchronous message failures are reported to the operator using message number 'BTLS\*'.

In addition to mount or demount failures, other library events are reported to the host as asynchronous messages. These library events are also reported to the operator using message number 'BTLS\*'.

Message contents:

- \* indicates that a library order was accepted by the IBM 3494 and 3495, and subsequently failed, or that an event was reported that is not related to a particular library order.

**ERA=xx**

'xx' displays the Error Recovery Action code contained in byte 3 of sense data. Table 26 on page 44 lists mount and demount errors reported by MSG=xx.

**COD=xx**

'xx' is the condition code contained in a mount or demount completion message. Table 26 on page 44 lists mount and demount errors reported by COD=xx.

**MSG=xx**

'xx' is a BTLS code that identifies the reason for the message. Table 26 on page 44 lists conditions reported by MSG=xx.

- o The order that failed ('M' for mount, 'D' for demount). The order is displayed as '\*\*' when it is not relevant to the error being reported.

*ddd*

The device for the mount or demount. The device is displayed as '\*\*\*\*' when it is not relevant to the error being reported.

- IIII The library serial number is used to report an error that is not related to a mount or demount. For example: BTLS\*(ERA=73,F4123) LIBRARY INTERVENTION REQUIRED.

*volser*

The volume serial being mounted or demounted. A *volser* is not displayed when it is not relevant to the error being reported.

**error description**

Describes the error.

**Module:** Messages 'BTLS' are issued by module IGX00030 (message display).

**Module:** Messages 'BTLS\*' are issued by module AOMBTTNT (tape attention).

**Problem Determination:** Refer to Chapter 5, "Error recovery procedures," on page 43 and to Table 26 on page 44.

---

**BTLS**      **\*(TAPE-LIB-MSG) message text received from the library operator**

---

**Explanation:** This message is issued to the system operator's console when the library operator has issued a message to the host from the library manager's console. This is NOT an error message.

---

**BTLS202I**      **SCRATCH VOLUMES BELOW THRESHOLD...COUNT=nnn**

---

**Explanation:** The number of scratch volumes in the library has dropped below the threshold limit established with the BTLPRM00 THRESHOLD parameter. COUNT 'nnn' is the number of scratch volumes remaining in the library.

---

**BTLS202I**      **LIBx(SCRATCHx) BELOW THRESHOLD...COUNT=nnn**

---

**Explanation:** The number of scratch volumes in the library has dropped below the threshold limit established with the LIBRARY THRESHOLD command. *LIBx* is the LIBNAME that was specified on the THRESHOLD command. *SCRATCHx* is the CATEGORY that was specified on the THRESHOLD command. COUNT 'nnn' is the number of scratch volumes remaining in the library.

---

**BTLS203I REPLY 'Y' TO RETRY, 'N' TO QUIT**

**Explanation:** Allows the operator to determine if a failing Mount or Demount should be retried. This message is issued following the message that reports the failure, as shown in the following example:

In the following example, the operator can reply 'N' to cancel the mount to device 283, or the operator can correct the 'out of scrctch' condition then reply 'Y'.

```
BTLS (ERA=67,M,283) SCRTCH CATEGORY EMPTY
BTLS203I: REPLY 'Y' TO RETRY, 'N' TO QUIT
```

**Note:** If the reply to message BTLS203I is 'N', the job that requested the mount must be cancelled.

---

**BTLS204I (vvvvvv) UNABLE TO ASSIGN TO THE PRIVATE CATEGORY**

**Explanation:** A failed demount in a VTS tape library might result in a scratch volume being left in the scratch category (rather than being assigned to the private category). This error occurs because the demount PLF order issued by BTLS is also used to assign the volume to the private category. The following is an example of a failed demount.

```
*BTLS(MSG=02,D,42F) ERROR RECOVERY FAILED,IOS=51
```

If the system does not use a tape management system, it is possible for the volume to be used to satisfy a

subsequent scratch mount. To avoid this problem, when a demount fails, BTLS saves the volser (of the failed demount). Following the next successful mount or demount to any device in the same library, the failed demount volume is assigned to the private category. Both the BTLS204I and BTLS205I messages indicate both the success or failure of the order used to assign the volume to the private category.

---

**BTLS205I (vvvvvv) IS NOW ASSIGNED TO THE PRIVATE CATEGORY**

**Explanation:** A failed demount in a VTS tape library may result in a scratch volume being left in the scratch category (rather than being assigned to the private category). This error occurs because the demount PLF order issued by BTLS is also used to assign the volume to the private category. The following is an example of a failed demount.

```
*BTLS(MSG=02,D,42F) ERROR RECOVERY FAILED,IOS=51
```

If the system does not use a tape management system, it is possible for the volume to be used to satisfy a subsequent scratch mount. To avoid this problem, when a demount fails, BTLS saves the volser (of the failed demount). Following the next successful mount or demount to any device in the same library, the failed demount volume is assigned to the private category. Both the BTLS204I and BTLS205I messages indicate both the success or failure of the order used to assign the volume to the private category.

---

## Dynamic device reconfiguration (DDR) messages

---

**BTLS301I SWAP xxx(LIB=[libname|NONE]), TO yyy(LIB=[libname|NONE]), [ALLOWED|REJECTED]**

**Explanation:** This message is only issued when the DDR trace OPTION is used. Message BTLS301I is issued for each device that is considered for a swap.

xxx

Device being swapped from.

libname

Library name if device is in a library ('NONE' is displayed for non-library devices).

yyy

Device being swapped to.

**ALLOWED**

The two devices are compatible and the swap is allowed.

**REJECTED**

The two devices are incompatible and the swap is not allowed.

---

**BTLS302I CATALOG ERROR**

**Explanation:** A catalog error occurred while trying to read library catalog records.

---

**BTLS303I NO (SYS1.BTLS.LIB.LIB\*) CATALOG ENTRIES FOUND**

**Explanation:** No library definition catalog records were found. The library DDR support cannot ensure that an appropriate device is swapped to.

## Messages

---

**BTLS304I DDR ASSIST DISABLED BY  
INSTALLATION OPTION**

**Explanation:** The OPTION catalog record indicates that the library DDR support should not influence device

selection. Library DDR support cannot ensure that an appropriate device is swapped.

---

## Tape allocation SSI initialization

The following messages are issued by module AOMALSSI during initialization of the BTLS Tape Allocation SSI.

---

**BTLS401I START OF BTLS INITIALIZATION**

**Explanation:** This message is issued as a result of the command:

```
SETSSI ADD,SUBNAME=BTLS,INITRTN=AOMALSSI.
```

---

**BTLS402I BTLS INITIALIZATION COMPLETE**

**Explanation:** This message indicates that module AOMALSSI has successfully completed initialization.

**System Action:** BTLS tape allocation module AOMALLOC has been activated. Depending on the BTLS options, AOMALLOC may begin to direct tape allocations either into or away from the tape library.

---

**BTLS403I IEFSSVT CREATE FAILED, RC=xx**

**Explanation:** This message indicates that module AOMALSSI was unable to create the BTLS subsystem vector table. Message BTLS405I will be issued to display the reason code from IEFSSVT.

**System Programmer Response:** See the return and reason code explanation in macro IEFJSRC for problem determination.

---

**BTLS404I IEFSSI ACTIVATE FAILED, RC=xx**

**Explanation:** This message indicates that module AOMALSSI was unable to activate the BTLS subsystem. Message BTLS405I will be issued to display the reason code from IEFSSI.

**System Programmer Response:** See the return and reason code explanation in macro IEFJSRC for problem determination.

---

**BTLS405I REASON CODE= XXXX**

**Explanation:** Displays the reason code from BTLS subsystem initialization failures.

**System Programmer Response:** Refer to the return and reason codes in macro IEFJSRC for problem determination.

---

**BTLS406I SUBSYSTEM INITIALIZATION FAILED**

**Explanation:** This message indicates that the BTLS Tape Allocation SSI is not available. BTLS tape allocation control module AOMALLOC will not be able to control allocations into and away from the library(s).

**System Action:** BTLS allocation module AOMALLOC has not been activated. Allocations to tape may take place, but without any influence from BTLS.

---

**BTLS407I LOAD FAILED FOR MODULE  
AOMALLOC**

**Explanation:** BTLS initialization module AOMALSSI was unable to load the BTLS tape allocation function module AOMALLOC.

**System Programmer Response:** Ensure that module AOMALLOC is available in LPALIB.

---

## Tape allocation SSI

The following messages are issued by the BTLS Tape Allocation module AOMALLOC.

---

**BTLS501I ALLOCATION OPTION IS ENABLED  
AND NO LIBRARY DEVICES ARE  
DEFINED.**

**Explanation:** The LIBRARY OPTIONS command specified enable('E') as the allocation option, and no library devices have been defined to BTLS.

**System Action:** BTLS marks all of the devices ineligible for allocation, which will cause the job to fail.

**System Programmer Response:** Either disable BTLS allocation using the LIBRARY OPTIONS command, or define library devices using the LIBRARY DEVICES command.

---

**BTLS502I LIBRARY DEVICES NOT DEFINED FOR  
LIBRARY: LIBn**

**Explanation:** The volume required for allocation is defined to BTLS as a library volume residing in library



'LIBn'. BTLS allocation cannot locate the LIBRARY DEVICES catalog record for library 'LIBn'.

**System Action:** BTLS marks all of the devices ineligible for allocation, which will cause the job to fail.

**System Programmer Response:** Either delete the volume from 'LIBn' using the LIBRARY DELETE command, or define library 'LIBn' using the LIBRARY DEVICES command.

**BTLS503I THERE ARE NO DEVICES ELIGIBLE FOR ALLOCATION**

**Explanation:** In attempting to direct allocation into a library (or away from all libraries), BTLS has excluded all of the eligible devices.

For example, the following conditions will create this error:

```
UNITNAME NAME=3494LIB,UNIT=((1A0,2))
LIBRARY DEVICES (1A01A1) LIBNAME(LIB1)
LIBRARY DELETE VOLSER(T12345)
.
.
//TESTDD DD UNIT=3495LIB,VOL=SER=T12345
```

In the example, the only devices eligible for allocation for TESTDD are 1A0 and 1A1. Because there is no BTLS volume record for T12345, BTLS assumes that it requires a tape drive outside the library and excludes devices 1A0 and 1A1 from allocation.

**System Action:** BTLS marks all of the devices ineligible for allocation, which will cause the job to fail.

**System Programmer Response:** If T12345 is in the library, use the LIBRARY DEFINE command to define the volume to BTLS. If T12345 is *not* in the library, change the UNIT= esoteric name to one that contains manual tape drives.

**BTLS504I AFFINITY FAILURE, VOLUMES MUST BE IN THE SAME LIBRARY OR NO LIBRARY**

**Explanation:** The source and target of UNIT=AFF must satisfy the following requirement. Either both volumes must reside in the same library, or both volumes must reside outside of any library.

**System Action:** BTLS marks all of the devices ineligible for allocation, which will cause the job to fail.

**System Programmer Response:** If both volumes are in the same library, ensure that they are both properly defined to BTLS (use the LIBRARY DEFINE command). If both volumes are to be manually mounted, ensure that neither is defined to BTLS (use the LIBRARY DELETE command).

**BTLS505I BTLS ALLOCATION ERROR WHILE PROCESSING DDNAME: ddname**

**Explanation:** This message identifies the DD statement that caused a BTLS allocation error message to be issued.

**BTLS506I INVALID BTLS ALLOCATION OPTION (MUST BE A,I,J OR M)**

**Explanation:** The SYS1.BTLS.LIB.OPT contains an invalid allocation option value. The first character of the options must be A,I,J or M.

**System Action:** BTLS marks all of the devices ineligible for allocation, which will cause the job to fail.

**System Programmer Response:** Redefine the BTLS options using the LIBRARY OPTIONS command.

**BTLS507I CATALOG SEARCH FOR: BTLS.BTLS.VOL.VVVVVV, FAILED WITH RETURN CODE= xx**

**Explanation:** An unexpected return code was received while searching the catalog for a BTLS volume record. The expected return codes are 0 and 8, which indicate either that the volume record was found or that it was not found. An example of an unexpected return code is 36, which indicates that the volume containing the user catalog is unavailable.

**System Action:** BTLS marks all of the devices ineligible for allocation, which will cause the job to fail.

**System Programmer Response:** See message IDC3009I to interpret the return code. Attempt to list the catalog record using the following command:

```
LISTC ENTRY('BTLS.BTLS.VOL.VVVVVV') ALL
```

### BTLS abnormal end codes

---

#### 5C5

**Explanation:** An error was detected while processing a BTLS Tape Library request.

Register 15 contains a hexadecimal reason code that indicates the type of error.

#### 000

A mount request to a library device failed with ERA=46 (drive not online), and the operator reply to message BTLS203I was 'N'.

---

## Chapter 5. Error recovery procedures

This chapter describes the error recovery procedures you should perform when a library mount fails. Mount failures are reported by the Basic Tape Library Support (BTLS) error message as in the following examples:

```
BTLS (ERA=67,M,180) SCRATCH CATEGORY EMPTY  
BTLS203I REPLY 'Y' TO RETRY, 'N' TO QUIT
```

```
BTLS*(COD=45,M,180) SCRATCH CATEGORY EMPTY
```

A “BTLS” message indicates that the mount order was not accepted by the IBM 3494 and 3495 library manager. A “BTLS\*” message indicates that the mount order was accepted by the library and placed on the library manager’s mount queue, then later failed when the mount was attempted.

In the first example, the scratch mount for device 180 failed because there were no volumes in the scratch category when the mount request was issued. In the second example, there were volumes in the scratch category at the time the mount order was issued. From the time that the mount was accepted until it could be executed, all of the scratch volumes were used.

When BTLS reports a mount failure it does not terminate the job that requested the mount. In most cases the job will continue to wait for the mount to be completed. Recovery from a failed mount can be done as follows:

- Reply 'N' if message BTLS203I was issued.
- Cancel the job that requested the mount.
- Correct the error condition.
- Re-submit the failing job.

An alternative method of recovery is as follows:

- Correct the error condition.
- Reply 'Y' if message BTLS203I was sent to the operator console.
- If message BTLS203I was not sent to the operator console, use the IDCAMS LIBRARY MOUNT command to re-issue the mount.

To re-issue a mount requires submitting a job that executes the IDCAMS LIBRARY MOUNT command, or issuing the LIBRARY MOUNT command as a TSO command. Conventions in use by the installation should be used to create an operator procedure that invokes the IDCAMS LIBRARY command.

Table 26 on page 44 lists the BTLS messages that are sent to the operators console to report library errors and status. To get more information about IBM 3494 and 3495 errors reported by BTLS messages, see *3494 Tape Library Dataserver Operator's Guide* or *3495 Tape Library Dataserver Operator's Guide*. These publications describe the appropriate recovery action for the IBM 3494 and 3495 ERA codes.

Table 26. Error recovery procedures

Error Code	Error Description and Recovery Action
ERA=27	<p data-bbox="354 258 756 279"><i>vvvvv</i>, VOLUME LABEL MISMATCH</p> <p data-bbox="354 310 1406 422"><b>Explanation:</b> The internal volser <i>vvvvv</i> specified for demount does not match the external volser. For standard label tapes the internal and external labels must be the same. The volume is demounted and assigned to the error category. To obtain a list of volumes in the error category issue the following command:</p> <div data-bbox="358 432 1425 485" style="border: 1px solid black; border-radius: 15px; padding: 5px; margin: 10px 0;"> <p data-bbox="402 447 854 468">LIBRARY INVENTORY UNIT(ddd) CATEGORY(ERROR)</p> </div> <p data-bbox="354 531 1338 590"><b>Recovery action:</b> Either rewrite the internal label to match the external label, or change the external label to match the internal label.</p>
ERA=43	<p data-bbox="354 604 699 625">LIBRARY DEVICE NOT READY</p> <p data-bbox="354 657 1425 709"><b>Explanation:</b> During mount or demount processing a rewind unload order was issued to a not ready device.</p> <p data-bbox="354 741 1406 800"><b>Recovery Action:</b> If the drive Ready/Not Ready switch is set to the 'ready' position with power on, repair action may be needed.</p>
ERA=60	<p data-bbox="354 814 894 835">ATTACHMENT INTERFACE EQUIPMENT CHECK</p> <p data-bbox="354 867 1373 919"><b>Explanation:</b> The Library Attachment Facility feature in the 3490/3490E/3590 subsystem failed. Communication between the control unit and the Library Manager is not possible.</p> <p data-bbox="354 951 1406 1035"><b>Recovery Action:</b> Cancel the job. If another 3490/3490E/3590 subsystem is in the library, vary the drives associated with the failed subsystem offline and resubmit the job. Contact your service representative.</p>
ERA=62	<p data-bbox="354 1050 886 1071">LIBRARY MANAGER OFFLINE TO SUBSYSTEM</p> <p data-bbox="354 1102 1268 1123"><b>Explanation:</b> The Library Manager is not online to the 3490/3490E/3590 subsystems.</p> <p data-bbox="354 1155 1414 1239"><b>Recovery Action:</b> Refer to the Problem Determination Procedures section of <i>3494 Tape Library Dataserver Operator's Guide</i>. If the library manager can be brought online, redrive the failed mount using the LIBRARY MOUNT command. Otherwise, cancel the job.</p>
ERA=63	<p data-bbox="354 1255 881 1276">LIBRARY MANAGER AND 3490 INCOMPATIBLE</p> <p data-bbox="354 1308 1425 1360"><b>Explanation:</b> The microcode levels of the 3490/3490E/3590 subsystem and the library manager are incompatible.</p> <p data-bbox="354 1392 1406 1476"><b>Recovery Action:</b> Cancel the job. If another 3490/3490E/3590 subsystem is in the library, vary the drives associated with the failed subsystem offline and resubmit the job. Contact your service representative.</p>
ERA=64	<p data-bbox="354 1486 626 1507"><i>vvvvv</i>, VOLUME IN USE</p> <p data-bbox="354 1539 1406 1602"><b>Explanation:</b> The volume <i>vvvvv</i> requested in a mount order is already mounted on another drive. The system issues message BTL203I and waits for the operator to respond.</p> <p data-bbox="354 1623 1422 1732"><b>Recovery Action:</b> Either respond 'N' to message BTL203I and cancel the job, or wait for volume <i>vvvvv</i> to be demounted. When volume <i>vvvvv</i> has been demounted, reply 'Y' to message BTL203I to redrive the mount. The LIBRARY REPORT command can be used to determine where volume <i>vvvvv</i> is mounted.</p>

Table 26. Error recovery procedures (continued)

Error Code	Error Description and Recovery Action
ERA=66	<p data-bbox="383 254 768 279"><i>vvvvv</i>, VOLSER NOT IN LIBRARY</p> <p data-bbox="383 310 1365 365"><b>Explanation:</b> The volume <i>vvvvv</i> requested in a mount order is not in the library manager's inventory. The system issues message BTLS203I and waits for the operator to respond.</p> <p data-bbox="383 392 1464 478"><b>Recovery Action:</b> Either respond 'N' to message BTLS203I and cancel the job, or insert the volume into the library. When the volume has been inserted, reply 'Y' to message BTLS203I to redrive the mount.</p>
ERA=67	<p data-bbox="383 491 914 516">SCRATCH CATEGORY EMPTY (MOUNT FAILED)</p> <p data-bbox="383 548 1455 602"><b>Explanation:</b> A scratch mount failed because there are no volumes left in the scratch category. The system issues message BTLS203I and waits for the operator to respond.</p> <p data-bbox="383 630 1446 743"><b>Recovery Action:</b> Either respond 'N' to message BTLS203I and cancel the job, or assign volumes to the scratch category. When volumes have been assigned, reply 'Y' to message BTLS203I to redrive the mount. Volumes are assigned to the scratch category with the LIBRARY SETCATEGORY command.</p>
ERA=68	<p data-bbox="383 756 610 781">SEQUENCE CHECK</p> <p data-bbox="383 812 1464 867"><b>Explanation:</b> A mount or demount was received out of order by the Library Manager (two mounts or two demounts in a row). This is an expected condition; BTLS should be able to recover.</p> <p data-bbox="383 894 1430 978">Cancelled or abnormally ended jobs can cause library sequence checks. When a job is cancelled while mount pending, the system does not issue a demount. The mount will remain on the library managers work queue even after the job that requested the mount has ended.</p> <p data-bbox="383 1005 1406 1089">When a subsequent job issues a mount to the same device, the subsequent mount will fail with ERA=68. BTLS recovers ERA=68 by issuing a demount (to cancel the original mount) and then redriving the failed mount.</p> <p data-bbox="383 1117 1398 1171"><b>Recovery Action:</b> Either redrive the failed mount by using the LIBRARY MOUNT command or cancel the job. If the error persists obtain a GTF trace and contact your service representative.</p>
ERA=69	<p data-bbox="383 1184 781 1209">LIBRARY OUTPUT STATIONS FULL</p> <p data-bbox="383 1241 1133 1266"><b>Explanation:</b> The convenience or bulk output station has become full.</p> <p data-bbox="383 1293 1422 1348"><b>Recovery Action:</b> Follow procedures in <i>3494 Tape Library Dataserver Operator's Guide</i> to empty the output station.</p>
ERA=6B	<p data-bbox="383 1360 829 1386"><i>vvvvv</i>, LIBRARY VOLUME MISPLACED</p> <p data-bbox="383 1417 1422 1472"><b>Explanation:</b> Volume <i>vvvvv</i> is flagged by the library manager as misplaced. The system issues message BTLS203I and waits for the operator to respond.</p> <p data-bbox="383 1499 1406 1587"><b>Recovery Action:</b> Either respond 'N' to message BTLS203I and cancel the job, or follow procedures in <i>3494 Tape Library Dataserver Operator's Guide</i> to return the volume to the library. When the volume has been returned, reply 'Y' to message BTLS203I to redrive the mount.</p>
ERA=6C	<p data-bbox="383 1600 813 1625"><i>vvvvv</i>, MISPLACED VOLUME FOUND</p> <p data-bbox="383 1656 1455 1711"><b>Explanation:</b> During processing in the library, volume <i>vvvvv</i> which had been flagged as misplaced was found.</p> <p data-bbox="383 1738 748 1764"><b>Recovery Action:</b> None required.</p>

Table 26. Error recovery procedures (continued)

Error Code	Error Description and Recovery Action
ERA=6D	<p data-bbox="354 258 732 279">LIBRARY DRIVE NOT UNLOADED</p> <p data-bbox="354 310 1425 453"><b>Explanation:</b> A demount was issued to the library manager for a volume that has not been unloaded from the drive. BTLS attempts to recover from ERA=6D by issuing a rewind unload command, then reissuing the failed demount. Note that ERA=6D can be a secondary error condition that occurs when BTLS issues a demount in response to ERA=68 (but even as a secondary error, BTLS should be able to recover from ERA=6D).</p> <p data-bbox="354 478 1425 562"><b>Recovery Action:</b> Unload the drive using the UNLOAD operator command, then demount the volume by using the BTLS LIBRARY DEMOUNT command. If the error persists obtain a GTF trace and contact your service representative.</p>
ERA=6F	<p data-bbox="354 583 651 604">LIBRARY VISION FAILURE</p> <p data-bbox="354 636 1425 716"><b>Explanation:</b> The library vision system has failed, and a library request was issued that requires the vision system. Audit and ejects and adding cartridges to the library cannot be performed while the vision system is failed. All other operations continue to function.</p> <p data-bbox="354 741 943 772"><b>Recovery Action:</b> Contact your service representative.</p>
ERA=70	<p data-bbox="354 793 824 814">LIBRARY MANAGER EQUIPMENT CHECK</p> <p data-bbox="354 846 919 867"><b>Explanation:</b> The library manager is not operational.</p> <p data-bbox="354 892 1382 951"><b>Recovery Action:</b> Refer to the Problem Determination Procedures section of <i>3494 Tape Library Dataserver Operator's Guide</i>.</p>
ERA=71	<p data-bbox="354 972 699 993">LIBRARY EQUIPMENT CHECK</p> <p data-bbox="354 1024 1344 1073"><b>Explanation:</b> The cartridge accessor is not operational. A hardware failure has occurred that requires repair before automated operations can continue.</p> <p data-bbox="354 1098 1382 1161"><b>Recovery Action:</b> Refer to the Problem Determination Procedures section of <i>3494 Tape Library Dataserver Operator's Guide</i>.</p>
ERA=72	<p data-bbox="354 1182 829 1203">LIBRARY NOT CAPABLE - MANUAL MODE</p> <p data-bbox="354 1234 1425 1283"><b>Explanation:</b> A request was made to a library that is in manual mode, and the request requires that the library be in auto mode.</p> <p data-bbox="354 1308 1146 1339"><b>Recovery Action:</b> Resubmit the request when the library is in auto mode.</p>
ERA=73	<p data-bbox="354 1360 776 1381">LIBRARY INTERVENTION REQUIRED</p> <p data-bbox="354 1413 1425 1461"><b>Explanation:</b> A condition in the library prevents any cartridge motion requests from being executed. The library is in the pause mode.</p> <p data-bbox="354 1486 1382 1539"><b>Recovery Action:</b> Refer to the Problem Determination Procedures section of <i>3494 Tape Library Dataserver Operator's Guide</i>.</p>
ERA=75	<p data-bbox="354 1560 724 1581">vvvvv, VOLUME INACCESSIBLE</p> <p data-bbox="354 1612 1377 1661"><b>Explanation:</b> Volume vvvvv is in the library, but cannot be accessed by the cartridge accessor because of a problem with either the cartridge or the cell that contains the cartridge.</p> <p data-bbox="354 1686 1425 1770"><b>Recovery Action:</b> Either respond 'N' to message BTLS203I and cancel the job, or follow procedures in <i>3494 Tape Library Dataserver Operator's Guide</i> to return the volume to service. When the volume has been returned to service, reply 'Y' to message BTLS203I to redrive the mount.</p>

Table 26. Error recovery procedures (continued)

Error Code	Error Description and Recovery Action
ERA=76	<p data-bbox="383 254 683 281">LIBRARY ALL CELLS FULL</p> <p data-bbox="383 310 1459 365"><b>Explanation:</b> All available storage cells in the library are full and there are additional volumes to be inserted.</p> <p data-bbox="383 394 1459 449"><b>Recovery Action:</b> Refer to the Problem Determination Procedures section of <i>3494 Tape Library Dataserver Operator's Guide</i> or <i>3495 Tape Library Dataserver Operator's Guide</i>.</p>
ERA=77	<p data-bbox="383 464 824 491">vvvvv, DUPLICATE VOLSER EJECTED</p> <p data-bbox="383 520 1459 604"><b>Explanation:</b> While processing a library operation, a volses was found in a storage cell or device. The volses vvvvv is a duplicate of one already in the library. The duplicate volume has been moved to the output station.</p> <p data-bbox="383 634 1459 680"><b>Recovery Action:</b> Refer to the Problem Determination Procedures section of <i>3494 Tape Library Dataserver Operator's Guide</i>.</p>
ERA=78	<p data-bbox="383 695 927 722">vvvvv, DUPLICATE VOLSER IN INPUT STATION</p> <p data-bbox="383 751 1459 806"><b>Explanation:</b> While processing volumes in the convenience input/output station, a volses was found that is a duplicate of one already in the library.</p> <p data-bbox="383 835 1459 890"><b>Recovery Action:</b> Refer to the Problem Determination Procedures section of <i>3494 Tape Library Dataserver Operator's Guide</i>.</p>
ERA=79	<p data-bbox="383 905 935 932">UNREADABLE VOLSER LEFT IN INPUT STATION</p> <p data-bbox="383 961 1459 1016"><b>Explanation:</b> While processing volumes in the convenience input/output station, a volses was found that has an unreadable label, no label, or the label is not valid.</p> <p data-bbox="383 1045 1459 1100"><b>Recovery Action:</b> Refer to the Problem Determination Procedures section of <i>3494 Tape Library Dataserver Operator's Guide</i>.</p>
ERA=7B	<p data-bbox="383 1115 824 1142">vvvvv, VOLUME MANUALLY EJECTED</p> <p data-bbox="383 1171 1459 1226"><b>Explanation:</b> Volume vvvvv has been flagged by the library manager as having been manually ejected. The system issues message BTL203I and waits for the operator to respond.</p> <p data-bbox="383 1255 1459 1360"><b>Recovery Action:</b> Either respond 'N' to message BTL203I and cancel the job, or follow procedures in <i>3494 Tape Library Dataserver Operator's Guide</i> to enter the volume into the library. When the volume has been entered into the library, reply 'Y' to message BTL203I to redrive the mount.</p> <p data-bbox="383 1390 1459 1444">If the volume does not belong in the library, issue the following command to remove it from the library manager database:</p> <div data-bbox="391 1451 1459 1528" style="border: 1px solid black; border-radius: 15px; padding: 10px; margin: 10px 0;"> <pre data-bbox="431 1465 813 1514">LIBRARY SETCATEGORY VOLUME(vvvvvv) - CATEGORY(PURGE) UNIT(ddd)</pre> </div> <p data-bbox="383 1579 1459 1604">Then issue the following command to remove the volume from the BTL2 volume catalog:</p> <div data-bbox="391 1610 1459 1667" style="border: 1px solid black; border-radius: 15px; padding: 10px; margin: 10px 0;"> <pre data-bbox="431 1625 737 1650">LIBRARY DELETE VOLUME(vvvvvv)</pre> </div>
ERA=7C	<p data-bbox="383 1696 829 1724">LIBRARY OUT OF CLEANER VOLUMES</p> <p data-bbox="383 1753 1459 1778"><b>Explanation:</b> The library must clean a drive and there are no cleaner volumes in the library.</p> <p data-bbox="383 1808 1459 1856"><b>Recovery Action:</b> Refer to the Problem Determination Procedures section of <i>3494 Tape Library Dataserver Operator's Guide</i>.</p>

Table 26. Error recovery procedures (continued)

Error Code	Error Description and Recovery Action
ERA=80	<p data-bbox="354 258 829 279"><i>vvvvvv</i>, UNEXPECTED VOLUME EJECTED</p> <p data-bbox="354 310 1417 394"><b>Explanation:</b> While processing a library operation, a volser <i>vvvvvv</i> was found in a storage cell or device that is not in the library manager database. The unexpected volume has been moved to the output station.</p> <p data-bbox="354 422 1385 478"><b>Recovery Action:</b> Refer to the Problem Determination Procedures section of <i>3494 Tape Library Dataserver Operator's Guide</i>.</p>
ERA=84	<p data-bbox="354 495 1013 516">DRIVE FAILURE, VARY OFFLINE AND CALL FOR SERVICE</p> <p data-bbox="354 548 1417 604"><b>Explanation:</b> The 3490, 3490E, or 3590 device failed to load or unload a cartridge and is no longer usable. VARY the drive offline.</p> <p data-bbox="354 632 943 657"><b>Recovery Action:</b> Contact your service representative.</p>
ERA=85	<p data-bbox="354 674 748 695">LIBRARY ENVIRONMENTAL ALERT</p> <p data-bbox="354 726 1417 783"><b>Explanation:</b> The 3495 library has detected smoke in the aisle and has stopped all operations with the cartridge accessor.</p> <p data-bbox="354 810 1385 863"><b>Recovery Action:</b> Refer to the Problem Determination Procedures section of <i>3495 Tape Library Dataserver Operator's Guide</i>.</p>
ERA=88	<p data-bbox="354 879 829 900"><i>vvvvvv</i>, DAMAGED CARTRIDGE EJECTED</p> <p data-bbox="354 932 1417 989"><b>Explanation:</b> Either cartridge <i>vvvvvv</i> is missing its leader block or the tape media is detached from the leader block.</p> <p data-bbox="354 1016 1377 1073"><b>Recovery Action:</b> Refer to the Problem Determination Procedures section of <i>3494 Tape Library Dataserver Operator's Guide</i>.</p>
COD=40	<p data-bbox="354 1089 797 1110"><i>vvvvvv</i>, LIBRARY HARDWARE FAILURE</p> <p data-bbox="354 1142 1377 1199"><b>Explanation:</b> The Library Attachment Facility feature in the 3490/3490E/3590 subsystem failed. Communication between the control unit and the Library Manager is not possible.</p> <p data-bbox="354 1226 1417 1310"><b>Recovery Action:</b> Cancel the job. If another 3490/3490E/3590 subsystem is in the library, vary the drives associated with the failed subsystem offline and rerun the job. Contact your service representative.</p>
COD=44	<p data-bbox="354 1327 688 1348"><i>vvvvvv</i>, VOLUME MISPLACED</p> <p data-bbox="354 1379 1179 1400"><b>Explanation:</b> Volume <i>vvvvvv</i> is flagged by the library manager as misplaced.</p> <p data-bbox="354 1428 1377 1547"><b>Recovery Action:</b> Either cancel the job or follow procedures in <i>3494 Tape Library Dataserver Operator's Guide</i> or <i>3495 Tape Library Dataserver Operator's Guide</i> to return the volume to the library. If the volume is returned to the library, redrive the mount using the LIBRARY MOUNT command.</p>
COD=45	<p data-bbox="354 1564 699 1585">SCRATCH CATEGORY EMPTY</p> <p data-bbox="354 1617 1365 1638"><b>Explanation:</b>A scratch mount failed because there are no volumes left in the scratch category.</p> <p data-bbox="354 1665 1406 1740"><b>Recovery Action:</b> Either cancel the job or assign volumes to the scratch category using the LIBRARY SETCATEGORY command. If volumes are assigned to the scratch category, redrive the mount using the LIBRARY MOUNT command.</p>



Table 26. Error recovery procedures (continued)

Error Code	Error Description and Recovery Action
COD=47	<p data-bbox="383 258 821 279"><i>vvvvv</i>, VOLUME MANUALLY EJECTED</p> <p data-bbox="383 310 1414 363"><b>Explanation:</b> Volume <i>vvvvv</i> has been flagged by the library manager as having been manually ejected.</p> <p data-bbox="383 394 1455 478"><b>Recovery Action:</b> Either cancel the job or follow procedures in <i>3494 Tape Library Dataserver Operator's Guide</i> to enter the volume into the library. If the volume is entered into the library, redrive the mount using the LIBRARY MOUNT command.</p> <p data-bbox="383 510 1398 562">If the volume does not belong in the library, issue the following command to remove it from the library manager database:</p> <div data-bbox="391 569 1455 642" style="border: 1px solid black; border-radius: 10px; padding: 5px; text-align: center;"> <p data-bbox="431 579 813 621">LIBRARY SETCATEGORY VOLUME(<i>vvvvvv</i>) - CATEGORY(PURGE) UNIT(<i>ddd</i>)</p> </div> <p data-bbox="383 695 1341 716">Then issue the following command to remove the volume from the BTLS volume catalog:</p> <div data-bbox="391 722 1455 779" style="border: 1px solid black; border-radius: 10px; padding: 5px; text-align: center;"> <p data-bbox="431 743 740 764">LIBRARY DELETE VOLUME(<i>vvvvvv</i>)</p> </div>
COD=48	<p data-bbox="383 821 805 842"><i>vvvvv</i>, VOLUME NOT IN INVENTORY</p> <p data-bbox="383 873 1365 926"><b>Explanation:</b> The volume <i>vvvvv</i> requested in a mount order is not in the library manager's inventory.</p> <p data-bbox="383 957 1455 1010"><b>Recovery Action:</b> Either cancel the job or insert the volume into the library. If the volume is inserted into the library, redrive the mount using the LIBRARY MOUNT command.</p>
COD=49	<p data-bbox="383 1031 748 1052"><i>vvvvv</i>, DEVICE NOT AVAILABLE</p> <p data-bbox="383 1083 1414 1136"><b>Explanation:</b> The 3490, 3490E, or 3590 device failed to load or unload volume <i>vvvvv</i> cartridge and is no longer usable.</p> <p data-bbox="383 1167 1455 1188"><b>Recovery Action:</b> VARY the device offline and cancel the job. Contact your service representative.</p>
COD=4A	<p data-bbox="383 1209 862 1230"><i>vvvvv</i>, UNRECOVERABLE LOAD FAILURE</p> <p data-bbox="383 1262 1414 1314"><b>Explanation:</b> The 3490, 3490E, or 3590 device failed to load or unload volume <i>vvvvv</i> cartridge and is no longer usable.</p> <p data-bbox="383 1346 1455 1367"><b>Recovery Action:</b> VARY the device offline and cancel the job. Contact your service representative.</p>
COD=4B	<p data-bbox="383 1388 854 1409"><i>vvvvv</i>, DAMAGED CARTRIDGE EJECTED</p> <p data-bbox="383 1440 1455 1493"><b>Explanation:</b> Either cartridge <i>vvvvv</i> is missing its leader block or the tape media is detached from the leader block.</p> <p data-bbox="383 1524 1455 1577"><b>Recovery Action:</b> Cancel the job. Refer to the Problem Determination Procedures section of <i>3494 Tape Library Dataserver Operator's Guide</i>.</p>
MSG=01	<p data-bbox="383 1598 699 1619">ERROR RECOVERY FAILED</p> <p data-bbox="383 1650 1438 1671"><b>Explanation:</b> While attempting to recover from an error, BTLS exceeded the limit of 20 I/O retries.</p> <p data-bbox="383 1703 1455 1740"><b>Recovery Action:</b> Cancel the job. If the error persists obtain a GTF trace and contact your service representative.</p>

Table 26. Error recovery procedures (continued)

Error Code	Error Description and Recovery Action
MSG=02	<p data-bbox="354 258 764 279">ERROR RECOVERY FAILED, IOS=<i>xx</i></p> <p data-bbox="354 310 1409 363"><b>Explanation:</b> While attempting to recover from an error, BTLS encountered an I/O error other than unit check.</p> <p data-bbox="354 394 1409 478"><b>Recovery Action:</b> Cancel the job. Code <i>xx</i> is the IOSCOD value returned by the I/O supervisor (IOS). Refer to the description of IOSCOD in macro IECDIOSB. If the error persists obtain a GTF trace and contact your service representative.</p>
MSG=03	<p data-bbox="354 495 773 516">ERROR RECOVERY FAILED, ERA=<i>xx</i></p> <p data-bbox="354 548 1409 600"><b>Explanation:</b> While attempting to recover from an error, BTLS encountered a unit check for which BTLS has no error recovery.</p> <p data-bbox="354 632 1425 709"><b>Recovery Action:</b> Cancel the job. Code <i>xx</i> is the error recovery action code (ERA) from sense byte 3. Refer to the ERA description in the Users Guide for the device. Contact your service representative.</p>
MSG=04	<p data-bbox="354 726 870 747"><i>vvvvv</i>, UNALLOCATED DEVICE DEMOUNTED</p> <p data-bbox="354 779 1409 863"><b>Explanation:</b> The AUTODEMOUNT option was specified in parmlib member BTLPRM00 and a mount completed successfully for an unallocated device. Normally, this is caused by a job being cancelled or ended abnormally while mount pending.</p> <p data-bbox="354 894 1409 947"><b>Recovery Action:</b> None required. Volume <i>vvvvv</i> has been demounted from the device. Both the device and the volume are available for use.</p>
MSG=05	<p data-bbox="354 963 773 984"><i>LIBRARY STATE CHANGE MESSAGE</i></p> <p data-bbox="354 1016 1409 1079"><b>Explanation:</b> A state change has occurred in the library. The following <i>state change messages</i> are reported:</p> <ul data-bbox="354 1079 678 1142" style="list-style-type: none"> <li>• LIBRARY IN PAUSE MODE</li> <li>• LIBRARY IN AUTO MODE</li> </ul> <p data-bbox="354 1173 716 1194"><b>Recovery Action:</b> None required.</p>
MSG=06	<p data-bbox="354 1215 667 1236"><i>LIBRARY ORDER TIMEOUT</i></p> <p data-bbox="354 1268 1409 1495"><b>Explanation:</b> The I/O operation to send a mount or demount order to the library was terminated with an IOSCOD=48, indicating that the I/O was purged. One possible cause is that while waiting for the library to accept the order, the job requesting the mount was cancelled or terminated and the outstanding I/O for the job was purged. Another possible cause is that the BTLS mount timer expired and has purged the I/O. BTLS sets a 10 minute timer to limit the time that it will wait for the Library Manager to accept a mount order onto its work queue. The time needed to perform the mount can take longer, but BTLS limits the time needed to send the order from the host to the Library Manager.</p>

## Appendix A. Allocation diagnostic support

The library allocation support provides a trace function to assist in problem determination. The trace function is invoked by the catalog OPTION entry 'T'. Library allocation data is traced to the job log. Each trace record contains the following:

```
*****
BTLTRACE: ddname (nn),ooo,uuuu,llll,(eeee,ee),OK,VOL=vvvvvv,aabccdd,
          (ss)eeff.t
BTLTRACE DEVICE LIST:
D80 D81 D82 D83*D84*D85*D86*D87 (devices with * are not eligible)
D88 D89 D8A D8B*D8C*D8D*D8E*D8F
D90 D91 D92 D93*D94*D95*D96*D97
D98 D99 D9A D9B*D9C*D9D*D9E*D9F
*****
```

<b>ddname</b>	<i>name</i> used in the DD statement
<b>nn</b>	DD concatenation position.
<b>ooo</b>	Options (for example, JTE)
<b>uuuu</b>	Catalog name
<b>llll</b>	Library name
<b>eeee,ee</b>	Data returned by installation exit (library name,flag byte).
<b>OK</b>	May be 'OK', which indicates that the return code from BTLIS allocation to common allocation is good and that the installation exit is <b>not</b> installed. Will be '*K' if the BTLIS return code is not zero, and will be 'O*' if the installation exit is installed and the BTLIS return code is zero. '**' indicates that the installation exit is installed and the BTLIS return code is not zero.
<b>vvvvvv</b>	<i>volser</i> for the specific request.
<b>aabccdd</b>	Reserved (flag bytes for library allocation logic).
<b>(ss)</b>	Allocation control parameter word or "NA".
<b>ee</b>	Internal number of the DD statement (referenced by UNIT=AFF).
<b>ff</b>	Internal number of referenced DD statement for UNIT=AFF. Contains '00' when UNIT=AFF is not used.
<b>t</b>	Either 'L', 'M', or 'A' to indicate whether a LIBRARY device, a MANUAL device(non-library), or ANY device is to be allocated.
<b>Device List</b>	A list of all devices in the eligible device list. Devices marked by '**' have been marked for exclusion.



---

## Appendix B. Message Display diagnostic support

Message Display module IGX00030 provides a trace function to assist in problem determination. When the trace is enabled, trace messages are included in the job log.

Trace is enabled with the command:

```
LIBRARY OPTIONS(IGX00030)
```

Trace is disabled with the command:

```
LIBRARY OPTIONS(NOIGX00030)
```

The following four types of trace messages are created:

**BTLTRACE(1)** Displays the IGX00030 input parameters.

**BTLTRACE(2)** Displays load display data prior to calling the user exit.

**BTLTRACE(3)** Displays load display data upon return from the exit.

**BTLTRACE(4)** Displays the results of I/O.

The following show the format of the trace messages:

```
BTLTRACE(1): CLIST(flags,text1,text2,ucbaddr)
```

```
BTLTRACE(2): MSGDATA(flags,message1,message2,category_code)
```

```
BTLTRACE(3): MSGDATA(flags,message1,message2,category_code)
```

```
BTLTRACE(4): I/O(ioscod,era,ccw,parameters)
```



---

## Appendix C. Installation exits

---

### Programming Interface information

This appendix contains Programming Interface information.

### End of Programming Interface information

This appendix is intended to help you to extend or replace IBM-supplied functions.

Installation exits are provided to allow you to extend or replace IBM-supplied functions at your installation. You can substitute your own installation exit routines for the Basic Tape Library Support (BTLS) replaceable modules. Installation-written exits give you greater control within your processing environment to help you to customize the Basic Tape Library Support operation to better meet your site's requirements.

---

## Set category installation exit

The set category installation exit, IDCLI04, is an installation exit called by IDCLI01 when the SETCEXIT command is specified. This installation exit allows you to specify the *volser* and *category* to be sent to the tape library as a SETCATEGORY order.

As distributed, IDCLI04 is a test installation exit that attempts to set 3 volumes (BTLS01,BTLS02,BTLS03) to the SCRTCH category. IDCLI04 is called in problem state, and must be linked into load module IDCLI01, replacing the test version of IDCLI04. You must code IDCLI04 as reentrant.

Entry to IDCLI04 is as follows:

```
REG0    = undefined
REG1    = address of 4 word parameter list,
         defined as follows:
WORD1 - addr of 6 byte volser (set by IDCLI04).
         For example: BTLS01,BTLS02,BTLS03.
WORD2 - addr of 8 byte category name (set by IDCLI04)
         For example: SCRTCH,EJECT,XEJECT.
WORD3 - addr of 1 byte category name length (IDCLI04)
         For example: 6,5,6.
WORD4 - addr of 200 byte work area. This area is set
         to zero on first entry, unchanged thereafter.
REG2-12 = undefined
REG13   = address of 18 word save area
REG14   = address of IDCLI01 return.
REG15   = entry point address of IDCLI04.
```

Exit from IDCLI04 is as follows:

```
REG0-14 = same as entry
REG15   = return code defined as follows:
         0 - terminate (normal)
         4 - Send a SETCATEGORY order to the library.
        12 - terminate (abnormal)
```

---

## Allocation installation exit

AOMABEXT is an installation exit called by AOMAB433 that can be used to control library allocation. The installation exit is optional, and is not invoked if it does not exist.

Entry to AOMABEXT is as follows:

```
AMODE(31),RMODE(ANY),Supervisor state,System protect key 0, Reentrant.
REG0    = undefined
REG1    = address of 5 word parameter list,
         defined as follows:
         WORD1 - address of 1 byte bit string.
                 1111 1...  FLAG1  Reserved for AOMAB433 use.
                 .... .1..  ANYLIB Set by AOMABEXT for ANY LIBRARY
                 .... ..1.  NOLIB Set by AOMABEXT for NO LIBRARY
                 .... ...1  FLAG2  Reserved for AOMAB433 use.
         WORD2 - address of 4 byte LIBNAME(library name).
                 Contains 'blanks' at entry to AOMABEXT.
                 May be set to library name by AOMABEXT.
         WORD3 - address of Volunit Table Entry (VUNT).
         WORD4 - address of SIOT.
         WORD5 - address of TCB.
REG2-12 = undefined
REG13   = address of 18 word save area
REG14   = address of AOMAB433 return.
REG15   = entry point address of AOMABEXT.
```

To use the installation exit, AOMABEXT must be link-edited with module AOMAB433. If it is not link-edited with AOMAB433, the installation exit will not be called. The installation exit routine that you code for AOMABEXT must be re-entrant.

The installation exit can influence an allocation in one (and ONLY one) of the following ways:

- Do nothing, indicating that AOMAB433 should determine the allocation.
- Store a library name (e.g.LIB1,LIB2) into LIBNAME, indicating that the allocation should be directed to a device in the named library.
- Set ANYLIB, indicating that the allocation should be directed to a device in any library.
- Set NOLIB, indicating that the allocation should exclude all library devices.

### Notes:

1. Setting ANYLIB or NOLIB must not modify any of the reserved fields in the parameter byte.
2. When SP™ 5.2 is installed, WORD3,WORD4 and WORD5 of the AOMABEXT interface are changed as follows:

```
WORD3 - address of SSTADRA (Device request array entry)
WORD4 - address of SSTADDA (DD array entry)
WORD5 - address of SSTA   (Tape Allocation SSI parameters)
```

For a description of the Tape Allocation SSI see *z/OS MVS Using the Subsystem Interface*.



---

## Message display installation exit

The Message Display installation exit (IGXMSGEX) is an existing installation exit. See *z/OS DFSMS Installation Exits* for a description of IGXMSGEX. When BTLS is installed, the message display installation exit IGXMSGEX can be used to select which BTLS scratch category is used to satisfy a library scratch mount.

As described in either of the above publications, the IGXMSGEX interface includes MSGTEXT, which is pointed to by MSGTXADR. MSGTEXT consists of a format control byte followed by two 8-byte display data fields. With BTLS installed, the first 8 byte display field can be used to indicate a scratch category name that BTLS should use for a scratch mount. Upon return from IGXMSGEX, BTLS will test the first seven bytes of the display data for the characters SCRTCH1,SCRTCH2,SCRTCH3, SCRTCH4,SCRTCH5,SCRTCH6, SCRTCH7,SCRTCH8. If one of the supported scratch names is found, then that scratch category will be used to 'override' the scratch category that would otherwise be used.



---

## Appendix D. MOUNT and DEMOUNT examples

The examples that follow show typical mount and demount operations using BTLS and a tape library.

---

### Successful SCRATCH mount

The following is an example of a successful scratch mount. A scratch volume is successfully mounted on library drive 9A0. When the mount completes the tape is processed and then demounted and assigned to the private category.

During *OPEN* processing for the tape dataset, mount message IEC501A **1** is sent to the operators console. The message requests that a PRIVAT scratch tape be mounted. The mount message causes BTLS to send an order to the tape library to mount a tape from the scratch category on 9A0. The job that requested the mount will then become *mount pending*, while *OPEN* waits for the tape drive to become *ready*.

To satisfy the mount request the library manager selects a tape from the scratch category. After the robot mounts the tape, the library presents *attention* status to the host to indicate that an event has completed and a status message is available. The *attention* causes BTLS to send an order to the library to read the status message. The status message in this example is a successful mount completion message, which causes BTLS to make the device *ready* (no longer *mount pending*).

When the device becomes ready, *OPEN* reads the internal volume label and issues message IEC705I **2**. After processing the tape, the tape dataset is *CLOSED* and the job ends. During de-allocation, message IEF234E **3** is issued to *keep* the tape. The *keep* message causes BTLS to send a demount order to the library. The demount order causes the volume to be removed from the scratch category and assigned to the private category.

```
$HASP373 TEST01  STARTED
1 *IEC501A M 09A0,PRIVAT,SL,
2   IEC705I TAPE ON 09A0,001300,SL,
3   IEF234E K 09A0,001300,PVT,
$HASP395 TEST01  ENDED
```

---

### Mount error recovery

The following example shows a scratch mount that fails because the library scratch category is empty. The failed mount is recovered after a tape is assigned to the scratch category.

When a scratch mount is issued for STEP1 **1**, BTLS sends a mount order to the library, which accepts the order. For each scratch mount, BTLS obtains the scratch category count from the tape library and compares the count to the threshold. If the count is below the threshold it is displayed with message BTLS202I **2**. When scratch tape 002400 is demounted **3**, BTLS sends an order to the library to assign it to the private category. In the example, there will be no volumes in the scratch category following the demount of 002400.

In STEP2 another scratch mount is issued by BTLS in response to message IEF233A **4**. This mount is rejected by the library with a unit check that includes ERA=67. BTLS reports the error **5** and then asks the operator whether to retry or

quit **6**. In the example, the operator executed the LIBRARY command from TSO to assign volume 002401 to the scratch category **7**. The operator then replied 'Y' **8** to the BTLS203I message and the mount was retried successfully.

```

1 *IEF233A M 09A0,PRIVAT,SL,ATMJOB,STEP1
2 *BTLS202I: SCRATCH VOLUMES BELOW THRESHOLD...COUNT=0001
    IEC705I TAPE ON 09A0,002400,SL,COMP,ATMJOB,STEP1
3   IEF234E K 09A0,002400,PVT,ATMJOB,STEP1

4 *IEF233A M 09A0,PRIVAT,SL,ATMJOB,STEP2
5 *BTLS (ERA=67,M,9A0) SCRATCH CATEGORY EMPTY (MOUNT FAILED)
6 *06 BTLS203I: REPLY 'Y' TO RETRY, 'N' TO QUIT

7   TSO LIBRARY SETCATEGORY VOLSER(002401) CATEGORY(SCRATCH)

8   R 6,Y
    IEE600I REPLY TO 06 IS;Y
    *BTLS202I: SCRATCH VOLUMES BELOW THRESHOLD...COUNT=0001
    IEC705I TAPE ON 09A0,002401,SL,COMP,ATMJOB,STEP2
    IEF234E K 09A0,002401,PVT,ATMJOB,STEP2
  
```

## Mount failure

In the following example a mount is issued for volume 001300. Volume 001300 had been inside the library, but was removed and sent off-site. The volume was removed using the EJECT category **1**, so the BTLS volume catalog record was not deleted (EJECTX will delete the volume catalog record). Because the volume catalog record was not deleted, BTLS believes that the volume is still in the library, so has allocated a device inside the library. The 'volume not in library' error **2** is reported by BTLS and the operator is asked by message BTLS203I **3** whether to retry the mount or not.

If the volume was still available, the operator could insert the volume into the library and reply 'yes' to BTLS203I. Since the volume is not available, the operator must reply 'no' and then must cancel the job **4**.

With BTLS, a library mount operates much like a human mount on a manual tape drive. The job that requested the mount waits (mount pending) for the mount to be completed. When the robot mounts the tape the pending mount is satisfied. If the library cannot satisfy the mount, the job remains mount pending and **must** be cancelled.

```

1   TSO LIBRARY SETCATEGORY VOLSER(001300) CATEGORY(EJECT)
    $HASP373 TEST02   STARTED
    *IEC501A M 09A2,001300,SL,COMP,TEST02,...
2 *BTLS (ERA=64,M,9A2) 001300, VOLSER NOT IN LIBRARY
3 *03 BTLS203I: REPLY 'Y' TO RETRY, 'N' TO QUIT
    R 3,N
4   CANCEL TEST02
    $HASP395 TEST02   ENDED
  
```

---

## Appendix E. Migration to DFSMS

Migration from a BTLS library to a DFSMS library requires the following:

- Creating DFSMS Tape Configuration Database VOLCAT entries for all of the volumes in the BTLS library(s).
- Changing the category code in the library manager for all of the volumes (from BTLS category codes to DFSMS category codes).

The LIBRARY MIGRATE command is provided to help create the TCDB VOLCAT records and to change category codes of volumes in the library.

---

### BTLS on the Internet

For up-to-date information on migration to DFSMS/MVS®, go to the following Web site and then search for **BTLS to SMS**:

<http://www.ibm.com/support/us>

---

### MIGRATE command

The MIGRATE command is used to migrate to DFSMS managed tape. The syntax of the MIGRATE command and a description of each parameter follows.

LIBRARY	MIGRATE	<b>SETUP</b>   <b>TCDBGEN</b>   <b>CHANGECAT</b>   <b>RESETCAT</b>   <b>LIST</b> <b>UNIT</b> ( <i>unit</i> ) <b>BTLSLIB</b> ( <i>btls-library-name</i> ) <b>SMSLIB</b> ( <i>dfsms-library-name</i> ) <b>DEVICETYPE</b> ( <b>3490</b>   <b>3490E</b>   <b>3590</b> ) <b>ERRORS</b>
---------	---------	--------------------------------------------------------------------------------------------------------------------------------------------------------------------------------------------------------------------------------------------------------------------------------------------------

where:

#### **MIGRATE**

Specifies that one of the following migration functions should be performed:

#### **SETUP**

A Read Volume Data command will be issued to the library manager to obtain information about each volume in the named BTLS library. The information will be saved in the BTLS volume catalog record for each volume. SETUP is required before the other MIGRATE functions can be performed.

If the ERRORS keyword is specified, only volumes with error status will be processed by SETUP. When ERRORS is not specified, SETUP will always execute from the beginning of the volume list for the named library. If a SETUP job ends prematurely and is executed again, all of the volumes will be processed from the beginning (not from the point of interruption).

If volume status should change between the time that SETUP is run and the time that migration is to take place, SETUP should be run again (successful migration requires accurate setup data).

#### **TCDBGEN**

Specifies that an IDCAMS 'CREATE VOLUMEENTRY' statement is to be created for each volume in the named BTLS library. The CREATE

VOLUMEENTRY statements will be created in the LIBOUT dataset. The LIBOUT dataset can then be used as SYSIN data for an IDCAMS job that will create TCDB volume entries.

**Note:** The CREATE command is used to create volume entries in the DFSMS tape configuration database(TCDB). The CREATE commands must be executed on the system that is being migrated to.

The following are examples of the records created by TCDBGEN:

```
CREATE VOLENT (NAME(VT00001) LOC(LIBRARY) LIBNAME(SMSLIB1 ) -  
              UATTR(SCRATCH) MTYPE(MEDIA1))  
  
CREATE VOLENT (NAME(VT00002) LOC(LIBRARY) LIBNAME(SMSLIB1 ) -  
              UATTR(SCRATCH) MTYPE(MEDIA2))  
  
CREATE VOLENT (NAME(VT00003) LOC(LIBRARY) LIBNAME(SMSLIB1 ) -  
              UATTR(PRIVATE) MTYPE(MEDIA1) -  
              COMP(UNKNOWN) REC(36TRACK))  
  
CREATE VOLENT (NAME(VT00004) LOC(LIBRARY) LIBNAME(SMSLIB1 ) -  
              UATTR(PRIVATE) MTYPE(MEDIA1) -  
              COMP(UNKNOWN) REC(18TRACK))  
  
CREATE VOLENT (NAME(VT00005) LOC(LIBRARY) LIBNAME(SMSLIB1 ) -  
              UATTR(PRIVATE) MTYPE(MEDIA2) -  
              COMP(UNKNOWN) REC(36TRACK))
```

### CHANGE CAT

Issues a SETCATEGORY order to the library manager to change BTLs category codes to the appropriate DFSMS category code for each volume in the named BTLs library. The SETCATEGORY will fail if the current category code of a volume is not the expected BTLs code that was recorded during SETUP.

### RESET CAT

Issue a setcategory order to the library manager to change DFSMS category codes back to the appropriate BTLs category code for each volume in the named BTLs library. The SETCATEGORY will fail if the current category code of a volume is not the expected DFSMS code that was recorded during CHANGE CAT.

### LIST

A report will be produced that contains migration information and status about each volume in the named BTLs library. The LIST report can be generated following any stage of migration (or following a migration stage that ends prematurely). If the ERRORS keyword is specified, only volumes with error status will be listed.

### UNIT(*unit*)

*unit* specifies the device used to communicate with the library. The UNIT parameter is required when SETUP, CHANGE CAT or RESET CAT is specified.

### BTLSLIB(*btss-library-name*)

*btss-library-name* specifies the 4 character BTLs library name (LIB1,LIB2,etc.). The BTLSLIB parameter defaults to BTLSLIB(LIB1). If a library other than LIB1 is used, the BTLSLIB parameter is required for all MIGRATE operations.

### SMSLIB(*dfsms-library-name*)

*dfsms-library-name* specifies the 1 to 8 character name that will be used by DFSMS to reference the library. The SMSLIB parameter is required when TCDBGEN is specified.

## DEVICETYPE(3490|3490E|3590)

Specifies the device type of devices in the BTLS library. The DEVICETYPE parameter is required when SETUP is specified.

Correct specification of 3490 or 3490E is critical for successful migration. During SETUP, the BTLS MIGRATE command uses the DEVICETYPE that you specify to determine the recording technology of PRIVATE volumes.

Recording technology is either 18 or 36 track (a PRIVATE volume created on 3490 is always 18TRK, while a PRIVATE volume created on 3490E is always 36TRK).

The DEVICETYPE that you specify is used by BTLS to identify recording technology in the CREATE VOLUNT statements that are created when you execute the LIBRARY MIGRATE TCDBGEN command. The TCDBGEN command creates VOLUNT statements that contain either REC(18TRACK) or REC(36TRACK). The following are two examples of CREATE VOLUNT statements:

```
CREATE VOLUNT (NAME(VOL001) LOC(LIBRARY)
              LIBNAME(SMSLIB1) UATTR(PRIVATE)
              MTYPE(MEDIA) COMP(UNKNOWN) REC(18TRACK)
CREATE VOLUNT (NAME(VOL002) LOC(LIBRARY)
              LIBNAME(SMSLIB1) UATTR(PRIVATE)
              MTYPE(MEDIA) COMP(UNKNOWN) REC(36TRACK)
```

Incorrect recording technology information can cause allocation errors under SMS. For example, if you specify 3490E, and the library has only 3490 devices, SMS will assume that none of the devices in the library are capable of reading the volumes. This occurs because of the incorrectly created TCDB record.

If you should determine that such an error was made, do the following:

1. If the LIBRARY MIGRATE TCDBGEN step has not executed yet, correct the DEVICETYPE parameter and execute the LIBRARY MIGRATE SETUP command again. Be sure to omit the ERROR parameter so that the MIGRATE SETUP command will restart from the beginning.
2. If the LIBRARY MIGRATE TCDBGEN step has executed, you can either discard the TCDBGEN output and execute step 1 above, or correct the TCDBGEN output. The corrected output is then used as input to IDCAMS in order to create a TCDB.
3. If the TCDB has already been created, either delete it and start with step 1 or 2 above, or correct the TCDB. Change the CREATE VOLUNT records into ALTER VOLUNT records, correct the incorrect RECORDING(xxTRACK) statements, then use these records to update the TCDB.

## ERRORS

Valid when SETUP or LIST is specified. ERRORS indicates that only volumes with error status are to be processed by SETUP or by LIST.

---

## Examples

BTLS users with mixed device types in the same library should do the following. Create 1 'logical' BTLS library for each device type, then assign only CST1 cartridges to the 3490 library(e.g.LIB1) and only CST2 to the 3490E library(e.g. LIB2). If there are any CST1 cartridges that must be used on a 3490E, they can be assigned to LIB2. For migration, the user must be able to indicate the device type that was last used by BTLS private tapes.

```

3495=====> 1 string 3490's (180-188)
             1 string 3490E's (190-189)
             500 CST1 cartridges
             500 CST2 cartridges

BTLS LIB1=> (180-188),400 CST1's
BTLS LIB2=> (190-198),100 CST1's,500 CST2's

```

```

LIBRARY  MIGRATE  SETUP    BTLSLIB(LIB1) UNIT(180) DEVICETYPE(3490)
LIBRARY  MIGRATE  LIST     BTLSLIB(LIB1)
LIBRARY  MIGRATE  CHANGECAT BTLSLIB(LIB1) UNIT(180)
LIBRARY  MIGRATE  TCDBGEN  BTLSLIB(LIB1) SMSLIB(SMSLIB1)

```

```

LIBRARY  MIGRATE  SETUP    BTLSLIB(LIB2) UNIT(190) DEVICETYPE(3490E)
LIBRARY  MIGRATE  LIST     BTLSLIB(LIB2)
LIBRARY  MIGRATE  CHANGECAT BTLSLIB(LIB2) UNIT(190)
LIBRARY  MIGRATE  TCDBGEN  BTLSLIB(LIB2) SMSLIB(SMSLIB1)

```

## Migration report

The purpose of the migration SETUP function is twofold. First, the SETUP function obtains required volume information from the library manager and saves the information in the BTLS volume catalog records for use by other migration functions. Second, the LIST report that can be generated provides the user with the opportunity to understand what will occur during migration and to verify volume status. The following is an example of the report created by the LIBRARY MIGRATE LIST command.

VOLSER	MEDIA	BTLSCAT	SMSCAT	RECORDING	STATUS	ERROR MESSAGE
T00001	MEDIA1	SCRCH	SMSMED1	N/A	BTLS	
T00002	MEDIA1	SCRCH	SMSMED1	N/A	BTLS	
T00021	MEDIA2	SCRCH4	SMSMED2	N/A	BTLS	
T00022	MEDIA2	SCRCH4	SMSMED2	N/A	BTLS	
T00023	MEDIA2	PRIVATE	SMSPRIV	36TRACK	BTLS	
T00024	MEDIA2	PRIVATE	SMSPRIV	36TRACK	BTLS	
T00025	MEDIA2	PRIVATE	SMSPRIV	36TRACK	BTLS	

### Notes:

1. The STATUS field indicates the current library manager category assignment for the volume (whether the volume is assigned to a BTLS or DFSMS category).
2. In the event that a MIGRATE function terminates prematurely, the operation will restart at the point of interruption when the job is resubmitted.

ERROR MESSAGES have the following format:

```
(X) error text
```

'X' is a character that indicates the MIGRATE function that detected the error (S=SETUP, C=CHANGE CAT, R=RESETCAT, T=TCDBGEN).

The following error text messages are supported:

**UNEXPECTED CATEGORY=XXXX** - A CHANGE CAT or RESETCAT function detected that the category code of the volume has changed. For example, the



volume may have been a scratch volume when SETUP was executed, but was changed to private prior to executing the CHANGE CAT function.

**SETUP IS REQUIRED** - The volume has not been successfully processed by SETUP.

**VOLUME NOT IN LIBRARY** - A volume listed in the BTLS catalog is not in the library.

**VOLUME UNAVAILABLE(IN USE)** - A volume listed in the BTLS catalog is unavailable (may be in the process of being ejected).

**TERMINATED BY I/O ERROR** - A permanent I/O caused the MIGRATE function to terminate.

---

## Usage notes

MIGRATE functions are controlled by the information obtained during SETUP. SETUP should be executed until a 'clean' LIST is obtained. Any volumes with error status will cause a non-zero return code from LIST.

Any errors listed in the ERROR report should be corrected, then the SETUP should be rerun. For example, for migration error 'VOLUME NOT IN LIBRARY', the corrective action might be to DELETE the BTLS catalog record for the volume. Message '(S) UNEXPECTED CATEGORY' indicates that the volume is not assigned to a BTLS category code; delete the volume from BTLS, or set the category properly. After errors have been corrected, execute LIBRARY MIGRATE SETUP ERRORS to re-execute SETUP for volumes that were listed in error.

When the SETUP report is error free, execute the MIGRATE TCDBGEN function. This produces IDCAMS commands to create TCDB volume entries.

The MIGRATE CHANGE CAT command will set the category for each BTLS volume to the appropriate DFSMS category. If it is necessary to return the volumes to BTLS, the MIGRATE RESET CAT command will change the volumes back to BTLS category codes.

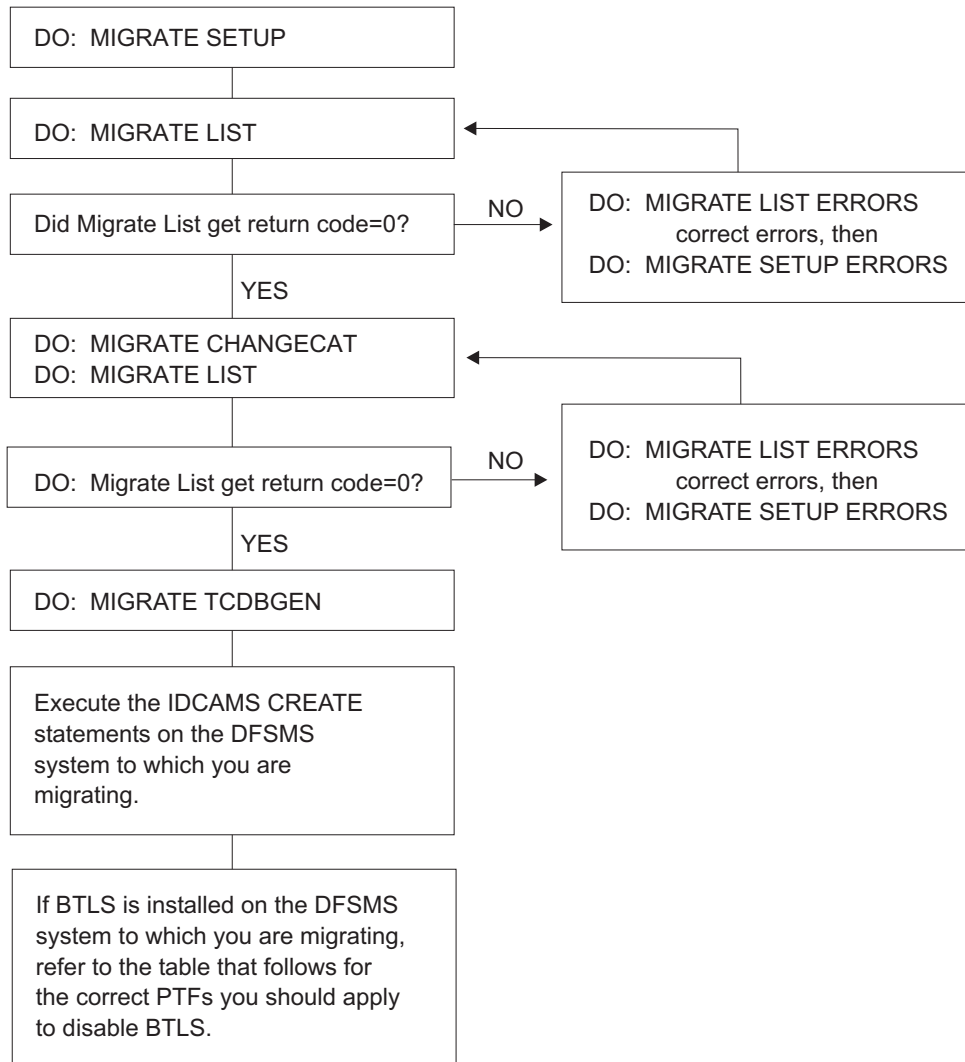
Tests indicate that SETUP, CHANGE CAT and RESET CAT, each take about 1-2 minutes for 100 volumes. TCDBGEN and report operations do not use the ATL and execute quickly.

Consider doing a trial run with a small subset of volumes in order to validate the sequence of operations. For example, define some volumes under an unused library name such as LIB8. Then perform the migrate process for BTLSLIB(LIB8).

---

## Migration steps

Figure 1 on page 66 shows the steps that you follow during migration.



BTLU601

Figure 1. Migration to DFSMS

See Table 27 for information on the APARs required before you can disable BTLS and migrate to DFSMS.

Table 27. Required APARs

FMID	Required APARs
JDZ111S	OW03323; OW18860
JDZ11BS	OW17868; OW18860
JDZ11CS	OW17868; OW18860
JDZ11DS	OW28259
JDZ11ES	OW36485
JDZ11FS	OW46288

**Note:** In addition to installing the disabling APAR, the BTLPRM00 member of SYS1.PARMLIB can be deleted. It is not necessary to delete BTLPRM00, but if it is deleted the following messages will be received during IPL:

IEA301I BTLPRM00 NOT-FOUND-IN SYS1.PARMLIB

The IEA301I message can be ignored.

---

## SETCATEGORY changes

In addition to the new MIGRATE command, the following new category names will be supported by the BTLS SETCATEGORY command. These new categories provide a means of 'manually' moving a single volume (or list of volumes) to DFSMS categories.

**SMSPRIV** - The DFSMS private category ('000F'X).

**SMSMED1** - The DFSMS media1 scratch category ('0001'X).

**SMSMED2** - The DFSMS media2 scratch category ('0002'X).

**SMSMED3** - The DFSMS 3590 scratch category ('0003'X).



---

## Appendix F. Accessibility

Accessibility features help a user who has a physical disability, such as restricted mobility or limited vision, to use software products successfully. The major accessibility features in z/OS™ enable users to:

- Use assistive technologies such as screen readers and screen magnifier software
- Operate specific or equivalent features using only the keyboard
- Customize display attributes such as color, contrast, and font size

---

### Using assistive technologies

Assistive technology products, such as screen readers, function with the user interfaces found in z/OS. Consult the assistive technology documentation for specific information when using it to access z/OS interfaces.

---

### Keyboard navigation of the user interface

Users can access z/OS user interfaces using TSO/E or ISPF. Refer to *z/OS TSO/E Primer*, *z/OS TSO/E User's Guide*, and *z/OS ISPF User's Guide Volume I* for information about accessing TSO/E and ISPF interfaces. These guides describe how to use TSO/E and ISPF, including the use of keyboard shortcuts or function keys (PF keys). Each guide includes the default settings for the PF keys and explains how to modify their functions.

---

### z/OS Information

z/OS information is accessible using screen readers with the BookServer/Library Server versions of z/OS books in the Internet library at:

<http://www.ibm.com/servers/eserver/zseries/zos/bkserv/>

One exception is command syntax that is published in railroad track format; screen-readable copies of z/OS books with that syntax information are separately available in HTML zipfile form upon request to [mhvrdfs@us.ibm.com](mailto:mhvrdfs@us.ibm.com).



---

## Notices

This information was developed for products and services offered in the U.S.A. IBM may not offer the products, services, or features discussed in this document in other countries. Consult your local IBM representative for information on the products and services currently available in your area. Any reference to an IBM product, program, or service is not intended to state or imply that only that IBM product, program, or service may be used. Any functionally equivalent product, program, or service that does not infringe any IBM intellectual property right may be used instead. However, it is the user's responsibility to evaluate and verify the operation of any non-IBM product, program, or service.

IBM may have patents or pending patent applications covering subject matter described in this document. The furnishing of this document does not give you any license to these patents. You can send license inquiries, in writing, to:

IBM Director of Licensing  
IBM Corporation  
North Castle Drive  
Armonk, NY 10504-1785  
U.S.A.

For license inquiries regarding double-byte (DBCS) information, contact the IBM Intellectual Property Department in your country or send inquiries, in writing, to:

IBM World Trade Asia Corporation Licensing  
2-31 Roppongi 3-chome, Minato-ku  
Tokyo 106, Japan

**The following paragraph does not apply to the United Kingdom or any other country where such provisions are inconsistent with local law:**

INTERNATIONAL BUSINESS MACHINES CORPORATION PROVIDES THIS PUBLICATION "AS IS" WITHOUT WARRANTY OF ANY KIND, EITHER EXPRESS OR IMPLIED, INCLUDING, BUT NOT LIMITED TO, THE IMPLIED WARRANTIES OF NON-INFRINGEMENT, MERCHANTABILITY OR FITNESS FOR A PARTICULAR PURPOSE. Some states do not allow disclaimer of express or implied warranties in certain transactions, therefore, this statement may not apply to you.

This information could include technical inaccuracies or typographical errors. Changes are periodically made to the information herein; these changes will be incorporated in new editions of the publication. IBM may make improvements and/or changes in the product(s) and/or the program(s) described in this publication at any time without notice.

IBM may use or distribute any of the information you supply in any way it believes appropriate without incurring any obligation to you.

Licensees of this program who wish to have information about it for the purpose of enabling: (i) the exchange of information between independently created programs and other programs (including this one) and (ii) the mutual use of the information which has been exchanged, should contact:

IBM Corporation  
Mail Station P300  
2455 South Road  
Poughkeepsie, NY 12601-5400  
USA

Such information may be available, subject to appropriate terms and conditions, including in some cases, payment of a fee.

The licensed program described in this information and all licensed material available for it are provided by IBM under terms of the IBM Customer Agreement, IBM International Program License Agreement, or any equivalent agreement between us.

---

## Programming interface information

This book is intended to help you to use the Basic Tape Library Support.

This book primarily documents information that is NOT intended to be used as Programming Interfaces of Basic Tape Library Support.

This book also documents intended Programming Interfaces that allow the customer to write programs to obtain the services of Basic Tape Library Support. This information is identified where it occurs, either by an introductory statement to a chapter or section or by the following marking:

————— **Programming Interface information** —————

————— **End of Programming Interface information** —————

---

## Trademarks

The following terms are trademarks of the International Business Machines Corporation in the United States, other countries, or both:

IBM	RACF
DFSMS/MVS	SP
IBMLink	TotalStorage
Magstar	VM/ESA
MVS/SP	z/OS
OS/390	z/VM
Resource Link	

Microsoft, Windows, Windows NT, and the Windows logo are trademarks of Microsoft Corporation in the United States, other countries, or both.

UNIX is a registered trademark of The Open Group in the United States and other countries.

Other company, product, and service names may be trademarks or service marks of others.



---

# Index

## Special characters

(S) UNEXPECTED CATEGORY message 65

## Numerics

047 abend 23  
3480 36  
3490 1, 24, 25, 36, 37  
3490E 37, 63  
3494 2, 24, 25, 38  
3495 2, 24, 25, 38, 63  
3590 1, 36, 37, 67  
5C5 abend code 42

## A

abend 047 23  
abend code, 5C5 42  
Access Method Services (AMS) xiv  
accessibility 69  
allocation, diagnostic support 51  
allocation, in BTLS 1  
allocation, installation exit 55, 56  
allocation, trace, library 51  
AMS JCL requirements 3  
APAR OY63009 28  
APARs, required 66  
attention messages, IBM 3494 and 3495 2  
AUDIT command 3  
AUDIT parameter 5  
authorized program analysis report (APAR) 66  
AUTODEMOUNT 26

## B

BTLPRM00 66  
BTLPRM00 parameter 26  
BTLS  
    messages, IBM 3494 and 3495 error messages 38  
BTLS abnormally ended codes 42  
BTLS allocation 1  
BTLS error recovery procedures 43  
BTLS introduction 1  
BTLS messages, and recovery 43  
BTLS notational conventions xiv  
BTLS, installation exit 55  
BTLS000I  
    messages, LIBRARY command 34  
BTLS001I  
    messages, LIBRARY command 35  
BTLS002I  
    messages, LIBRARY command 35  
BTLS006I  
    messages, LIBRARY command 35  
BTLS007I  
    messages, LIBRARY command 35

BTLS008I  
    messages, LIBRARY command 35  
BTLS009I  
    messages, LIBRARY command 35  
BTLS010I  
    messages, LIBRARY command 35  
BTLS011I  
    messages, LIBRARY command 35  
BTLS013I  
    messages, LIBRARY command 35  
BTLS014I  
    messages, LIBRARY command 35  
BTLS015I  
    messages, LIBRARY command 35  
BTLS016I  
    messages, LIBRARY command 35  
BTLS017I  
    messages, LIBRARY command 36  
BTLS018I  
    messages, LIBRARY command 36  
BTLS019I  
    messages, LIBRARY command 36  
BTLS022I  
    messages, LIBRARY command 36  
BTLS023I  
    messages, LIBRARY command 36  
BTLS024I  
    messages, LIBRARY command 36  
BTLS025I  
    messages, LIBRARY command 36  
BTLS026I  
    messages, LIBRARY command 36  
BTLS027I  
    messages, LIBRARY command 36  
BTLS031I  
    messages, LIBRARY command 36  
BTLS032I  
    messages, LIBRARY command 37  
BTLS040I  
    messages, LIBRARY command 37  
BTLS041I  
    messages, LIBRARY command 37  
BTLS046I  
    messages, LIBRARY command 37  
BTLS049I  
    messages, LIBRARY command 37  
BTLS050I  
    messages, LIBRARY command 37  
BTLS051I  
    messages, LIBRARY command 37  
BTLS052I  
    messages, LIBRARY command 37  
BTLS053I  
    messages, LIBRARY command 37  
BTLS101I  
    messages, allocation 33  
BTLS102I  
    messages, allocation 33

BTLS103I  
 messages, allocation 33

BTLS104I  
 messages, allocation 34

BTLS105I  
 messages, allocation 34

BTLS106I  
 messages, allocation 34

BTLS107I  
 messages, allocation 34

BTLS202I  
 messages, IBM 3494 and 3495 error messages 38

BTLS203I  
 messages, IBM 3494 and 3495 error messages 39

BTLS204I  
 messages, IBM 3494 and 3495 error messages 39

BTLS205I  
 messages, IBM 3494 and 3495 error messages 39

BTLS301I  
 messages, DDR 39

BTLS302I  
 messages, DDR 39

BTLS303I  
 messages, DDR 39

BTLS304I  
 messages, DDR 40

BTLS401I  
 messages, module AOMALSSI 40

BTLS402I  
 messages, module AOMALSSI 40

BTLS403I  
 messages, module AOMALSSI 40

BTLS404I  
 messages, module AOMALSSI 40

BTLS405I  
 messages, module AOMALSSI 40

BTLS406I  
 messages, module AOMALSSI 40

BTLS407I  
 messages, module AOMALSSI 40

BTLS501I  
 messages, module AOMALLOC 40

BTLS502I  
 messages, module AOMALLOC 40

BTLS503I  
 messages, module AOMALLOC 41

BTLS504I  
 messages, module AOMALLOC 41

BTLS505I  
 messages, module AOMALLOC 41

BTLS506I  
 messages, module AOMALLOC 41

BTLS507I  
 messages, module AOMALLOC 41

## C

category names, list 21

CATEGORY parameter 18

CATEGORY(name) 35

command

- AUDIT 3
- DEFINE 3
- DELETE 3
- IDCAMS LIBRARY 43
- INVENTORY 4, 29
- INVENTORY CATEGORY(ALL) 10
- LIBRARY 2, 3, 4, 6, 7, 8, 9, 10, 11, 12, 15, 16, 17, 18, 19, 20, 21
- LIBRARY AUDIT 5, 37
- LIBRARY DEFINE 41
- LIBRARY DELETE 36, 40, 41
- LIBRARY DEMOUNT 36
- LIBRARY DEVICES 7, 25, 37, 40
- LIBRARY INVENTORY 3, 4, 36
- LIBRARY JOB NAMES 7, 36
- LIBRARY LISTVOL 3, 4
- LIBRARY MIGRATE 37
- LIBRARY MOUNT 36, 43
- LIBRARY OPTIONS 34, 36, 40, 41
- LIBRARY REPORT 37
- LIBRARY THRESHOLD 16, 26
- MIGRATE 61, 67
- MIGRATE CHANGECAT 65
- MIGRATE RESETCAT 65
- MODIFY CATALOG 23
- SETCATEGORY 3, 10, 67
- SETCEXIT 55
- SETSSI 28
- THRESHOLD 38
- TSO 4

condition code 12 35

conventions, AMS xiv

COUNTS parameter 6

## D

DDR (dynamic device reconfiguration) 2

DEFINE command 3

DEFINE parameter 6

DELETE command 3

DELETE parameter 7

DEMOUNT delayed errors, list 43

demount message 2

DEMOUNT parameter 8

DEVICES parameter 8

DEVICETYPE parameter 63

disability 69

documents, licensed xiii

drive not online 42

dynamic device reconfiguration (DDR) 2, 39

## E

ERA=46 42

error messages 33

Error Recovery Action (ERA) 34

error recovery procedures 43

ERROR volume 1

errors, delayed mount and demount 43

example

TSO command JCL 4  
exit, installation 55, 56, 57

## H

HCD 24

## I

IBM 3494 and 3495 messages 38  
IDC3009I message 34, 35, 41  
IDCAMS JCL requirements 3  
IDCAMS LIBRARY command 43  
IDCLI01 55  
IDCLI01 message 36  
IDCLI04 55  
IEA301I message 66  
IEACMD00 23, 28  
IEC501A 59  
IECDIOSB macro 35  
IECSMF94 mapping macro 2  
IEF234E 59  
IEF245I message 34  
IGX00030, message display 53  
IGXMSGEX 57  
IKJTSO00 23  
installation exit, allocation 55, 56  
installation exit, BTLS 55  
installation exit, message display 55, 57  
installation exit, set category 55  
installation tasks 23  
integrated cartridge loader (ICL) 2, 3  
INVENTORY CATEGORY(ALL) command 10  
INVENTORY command 4, 29  
INVENTORY parameter 9  
IOSB control block 35  
IOSCOD=41 35

## J

JCL requirements 3  
job log and trace 51  
JOBNAME parameter 10

## K

KEEP demount 1  
keyboard 69

## L

LIBAFFINITY 27  
LIBIN record 35  
LIBIN volume 37  
LIBOUT DD statement 3  
library allocation support 51  
LIBRARY AUDIT command 5, 37  
LIBRARY command 2, 3, 4, 6, 7, 8, 9, 10, 11, 12, 15,  
16, 17, 18, 19, 20, 21, 22, 33, 34

LIBRARY command (*continued*)

AUDIT parameter 5  
COUNTS parameter 6  
LIBRARY DEFINE command 41  
LIBRARY DELETE command 36, 40, 41  
LIBRARY DEMOUNT command 36  
LIBRARY DEVICES command 7, 25, 37, 40  
LIBRARY INVENTORY command 3, 4, 36  
LIBRARY JOBNAMES command 7, 36  
LIBRARY LISTVOL command 3, 4  
LIBRARY MIGRATE command 37, 61  
LIBRARY MOUNT command 36, 43  
library names, list 22  
LIBRARY OPTIONS command 34, 36, 40, 41, 53  
LIBRARY REPORT command 37  
library statistics, IBM 3494 and 3495 2  
LIBRARY THRESHOLD command 16, 26  
licensed documents xiii  
LISTVOL parameter 11  
LookAt message retrieval tool xiii

## M

MANUALLY EJECTED category 37  
message display 1  
message display, diagnostic support 53  
message display, installation exit 55, 57  
message retrieval tool, LookAt xiii  
message text, allocation  
ALLOCATION ASSIST ERROR WHILE  
PROCESSING DDNAME: ddname 34  
ALLOCATION ASSIST INSTALLED AND NO  
LIBRARY ENTRY FOUND. WILL CAUSE IEF245I  
MESSAGE. 33  
ALLOCATION ASSIST INVALID OPTION  
SPECIFIED. WILL CAUSE IEF245I  
MESSAGE. 34  
ALLOCATION ASSIST, NO ELIGIBLE DEVICES.  
WILL CAUSE IEF245I MESSAGE. 33  
CATALOG SEARCH FOR:  
BTLS.BTLS.VOL.VVVVVV, FAILED WITH RETURN  
CODE= xx 34  
UNIT AFFINITY NOT ALLOWED FOR VOLUMES IN  
AND OUT OF THE LIBRARY. WILL CAUSE  
IEF245I MESSAGE. 34  
message text, DDR  
CATALOG ERROR 39  
DDR ASSIST DISABLED BY INSTALLATION  
OPTION 40  
NO (SYS1.BTLS.LIB.LIB\*) CATALOG ENTRIES  
FOUND 39  
message text, IBM 3494 and 3495 error messages  
(vvvvv) IS NOW ASSIGNED TO THE PRIVATE  
CATEGORY 39  
(vvvvv) UNABLE TO ASSIGN TO THE PRIVATE  
CATEGORY 39  
\*(TAPE-LIB-MSG) message text received from the  
library operator 38  
[\*](ERA|COD|MSG=xx,IIII) [volser,] error  
description 38

message text, IBM 3494 and 3495 error messages  
(*continued*)

- [\*](ERA|COD|MSG=xx,o,ddd) [volser,] error description 38
- LIBx(SCRTCHx) BELOW
- THRESHOLD....COUNT=nnn 38
- REPLY 'Y' TO RETRY, 'N' TO QUIT 39
- SCRTCH VOLUMES BELOW
- THRESHOLD....COUNT=nnn 38

message text, LIBRARY command  
(REFER TO IDC3009I) CATALOG RETCODE= xx

- REASON CODE= xx 35
- AUDIT ALREADY IN PROGRESS 37
- AUDIT, vvvvvv, error text 37
- AUDIT, vvvvvv, FAILED 37
- AUDIT, vvvvvv, SUCCESSFUL 37
- BTLS IS DISABLED 37
- DEVICETYPE MUST BE 3490, 3490E, or 3590 37
- ENTRY(catalog.dataset.name) DEFINED IN CATALOG 35
- ENTRY(catalog.dataset.name) DELETED FROM CATALOG 35
- ENTRY(catalog.dataset.name) NOT LOCATED IN CATALOG 35
- ERA=xx,msgtext 34
- ERROR READING FROM LIBIN 35
- I/O TO DEVICE ddd FAILED WITH IOSCOD= ioscod 35
- INVALID CHARACTERS IN JOBNAME: jobname 36
- INVALID DEVICE TYPE FOR ddd 36
- INVALID LIBRARY NAME 36
- INVALID OPTION SPECIFIED 36
- INVALID VOLSER 36
- INVENTORY CONTAINS WARNING OR INFORMATIONAL DATA 36
- LIBIN VOLSER(volser) 35
- libname IS NOT DEFINED 37
- LIBRARY UNIT MISSING OR INVALID 35
- NUMBER OF VOLUMES IN CATEGORY (catname)= nnnn 36
- NUMBER OF VOLUMES IN CATEGORY IS: nnn 36
- NUMBER OF VOLUMES PROCESSED IS: nnn 37
- OPERATION COULD NOT BE STARTED 36
- RACF RETURN CODE= xx 36
- SENSE= sense bytes 35
- TOO MANY PARAMETERS SPECIFIED 36
- UNABLE TO FIND UCB FOR ddd 35
- UNDEFINED CATEGORY SPECIFIED 35
- USER EXIT VOLSER(volser) CATEGORY(category) 35
- VOLUME vvvvvv IS NOT MANUALLY EJECTED OR MISPLACED 37

message text, module AOMALLOC

- AFFINITY FAILURE, VOLUMES MUST BE IN THE SAME LIBRARY OR NO LIBRARY 41
- ALLOCATION OPTION IS ENABLED AND NO LIBRARY DEVICES ARE DEFINED. 40
- BTLS ALLOCATION ERROR WHILE PROCESSING DDNAME: ddname 41

message text, module AOMALLOC (*continued*)

- CATALOG SEARCH FOR: BTLS.BTLS.VOL.VVVVVV, FAILED WITH RETURN CODE= xx 41
- INVALID BTLS ALLOCATION OPTION (MUST BE A,I,J OR M) 41
- LIBRARY DEVICES NOT DEFINED FOR LIBRARY: LIBn 40
- THERE ARE NO DEVICES ELIGIBLE FOR ALLOCATION 41

message text, module AOMALSSI

- BTLS INITIALIZATION COMPLETE 40
- IEFSSI ACTIVATE FAILED, RC=xx 40
- IEFSSVT CREATE FAILED, RC=xx 40
- LOAD FAILED FOR MODULE AOMALLOC 40
- REASON CODE= XXXX 40
- START OF BTLS INITIALIZATION 40
- SUBSYSTEM INITIALIZATION FAILED 40

messages

- attention 2

messages, allocation

- BTLS101I 33
- BTLS102I 33
- BTLS103I 33
- BTLS104I 34
- BTLS105I 34
- BTLS106I 34
- BTLS107I 34

messages, BTLS 33

messages, BTLS\*, and recovery 43

messages, DDR

- BTLS301I 39
- BTLS302I 39
- BTLS303I 39
- BTLS304I 40

messages, IBM 3494 and 3495 33

messages, IBM 3494 and 3495 error messages

- BTLS 38
- BTLS202I 38
- BTLS203I 39
- BTLS204I 39
- BTLS205I 39

messages, LIBRARY command 34

- BTLS000I 34
- BTLS001I 35
- BTLS002I 35
- BTLS006I 35
- BTLS007I 35
- BTLS008I 35
- BTLS009I 35
- BTLS010I 35
- BTLS011I 35
- BTLS013I 35
- BTLS014I 35
- BTLS015I 35
- BTLS016I 35
- BTLS017I 36
- BTLS018I 36
- BTLS019I 36
- BTLS022I 36
- BTLS023I 36

messages, LIBRARY command *(continued)*

BTLS024I 36  
BTLS025I 36  
BTLS026I 36  
BTLS027I 36  
BTLS031I 36  
BTLS032I 37  
BTLS040I 37  
BTLS041I 37  
BTLS046I 37  
BTLS049I 37  
BTLS050I 37  
BTLS051I 37  
BTLS052I 37  
BTLS053I 37

messages, module AOMALLOC

BTLS501I 40  
BTLS502I 40  
BTLS503I 41  
BTLS504I 41  
BTLS505I 41  
BTLS506I 41  
BTLS507I 41

messages, module AOMALSSI

BTLS401I 40  
BTLS402I 40  
BTLS403I 40  
BTLS404I 40  
BTLS405I 40  
BTLS406I 40  
BTLS407I 40

MIGRATE CHANGE CAT command 65

MIGRATE command 61, 67

MIGRATE functions, usage notes 65

MIGRATE RESET CAT command 65

MIGRATE SETUP ERRORS 65

migration report 64

migration steps 65

migration to DFSMS 61, 67

MISPLACED category 37

mixed device types 63

MODIFY CATALOG command 23

mount and demount 2

mount and demount, IBM 3494 and 3495 2

mount delayed errors, list 43

mount failure recovery 43

mount message 2

MOUNT parameter 11

mount, SCRATCH 59

MVS/SP 28

MVSCP 24

## N

names, category list 21

names, library list 22

No volser demount 1

notational conventions, BTLS xiv

## O

OPTIONS parameter 12

OW03323 37

OW17868 37

OW18860 37

OW28259 37

## P

parameter

AUDIT 5

BTLPRM00 26

CATEGORY 18

COUNTS 6

DEFINE 6

DELETE 7

DEMOUNT 8

DEVICES 8

DEVICETYPE 63

INVENTORY 9

JOBNAMES 10

LISTVOL 11

MOUNT 11

OPTIONS 12

parameter 3

REPORT 15

RESETACL 16

RESETDEVICE 17

SETACL 17

SETCATEGORY 18

SETCEXIT 18

SETDEVICE 19

THRESHOLD 20, 38, 39

VOLSER 12

PRIVATE volume 1

problem determination 53

PUBLIC demount 1

## R

REPORT parameter 15

report, migration 64

RESETACL parameter 16

RESETDEVICE parameter 17

Resource Access Control Facility (RACF) 4, 36

RETAIN demount 1

return code 12 35, 36

return code 4 37

## S

SCRATCH mount 59

set category, installation exit 55

SETACL parameter 17

SETCATEGORY command 3, 10, 35, 67

SETCATEGORY parameter 18

SETCEXIT command 55

SETCEXIT parameter 18

SETCEXIT routine 35

SETDEVICE parameter 19

- SETSSI command 28
- shortcut keys 69
- SMF statistics 2
- SMF type=94, IBM 3494 and 3495 2
- SMSMED1 67
- SMSMED2 67
- SMSMED3 67
- SMSPRIV 67
- STATUS field 64
- steps, migration 65
- support, BTLS 1
- syntax
  - LIBRARY command 4
- SYSOUT list 35

## T

- Tape Allocation SSI 28
- Tape Configuration Database VOLCAT 61
- technical support 61
- THRESHOLD command 38
- THRESHOLD parameter 20, 38, 39
- trace function 53
- trace library allocation 51
- trace, invoking 51
- TSO command 4
- TSO/E LIBRARY command 23

## U

- UNCHANGED volume 1
- unit control block (UCB) 36

## V

- VM/ESA 25
- VOLSER parameter 3, 12
- VOLUME NOT IN LIBRARY error 65

---

# Readers' Comments — We'd Like to Hear from You

z/OS DFSMS V1R5  
Basic Tape Library Support (BTLS)  
User's Guide and Reference

Publication No. SC26-7016-08

Overall, how satisfied are you with the information in this book?

	Very Satisfied	Satisfied	Neutral	Dissatisfied	Very Dissatisfied
Overall satisfaction	<input type="checkbox"/>	<input type="checkbox"/>	<input type="checkbox"/>	<input type="checkbox"/>	<input type="checkbox"/>

How satisfied are you that the information in this book is:

	Very Satisfied	Satisfied	Neutral	Dissatisfied	Very Dissatisfied
Accurate	<input type="checkbox"/>	<input type="checkbox"/>	<input type="checkbox"/>	<input type="checkbox"/>	<input type="checkbox"/>
Complete	<input type="checkbox"/>	<input type="checkbox"/>	<input type="checkbox"/>	<input type="checkbox"/>	<input type="checkbox"/>
Easy to find	<input type="checkbox"/>	<input type="checkbox"/>	<input type="checkbox"/>	<input type="checkbox"/>	<input type="checkbox"/>
Easy to understand	<input type="checkbox"/>	<input type="checkbox"/>	<input type="checkbox"/>	<input type="checkbox"/>	<input type="checkbox"/>
Well organized	<input type="checkbox"/>	<input type="checkbox"/>	<input type="checkbox"/>	<input type="checkbox"/>	<input type="checkbox"/>
Applicable to your tasks	<input type="checkbox"/>	<input type="checkbox"/>	<input type="checkbox"/>	<input type="checkbox"/>	<input type="checkbox"/>

Please tell us how we can improve this book:

Thank you for your responses. May we contact you?  Yes  No

When you send comments to IBM, you grant IBM a nonexclusive right to use or distribute your comments in any way it believes appropriate without incurring any obligation to you.

---

Name

---

Address

---

Company or Organization

---

Phone No.



Fold and Tape

Please do not staple

Fold and Tape



NO POSTAGE  
NECESSARY  
IF MAILED IN THE  
UNITED STATES

# BUSINESS REPLY MAIL

FIRST-CLASS MAIL PERMIT NO. 40 ARMONK, NEW YORK

POSTAGE WILL BE PAID BY ADDRESSEE

International Business Machines Corporation  
Department 55JA, Mail Station P384  
2455 South Road  
Poughkeepsie, NY 12601-5400



Fold and Tape

Please do not staple

Fold and Tape







Program Number: 5655-056

Printed in USA

SC26-7016-08

